

# TM 5-4310-241-20P

DEPARTMENT OF THE ARMY TECHNICAL MANUAL

---

## ORGANIZATIONAL MAINTENANCE REPAIR PARTS AND SPECIAL TOOLS LIST

COMPRESSOR, RECIPROCATING: AIR; 5 CFM; 175 PSI; HAND TRUCK MOUNTED; GASOLINE DRIVEN (CHAMPION PNEUMATIC MODEL LP-512-ENG) LESS ENGINE FSN 4310-861-9820 (CHAMPION PNEUMATIC MODEL LP-512-ENG 1) LESS ENGINE FSN 4310-079-6290 RECEIVER MOUNTED, ELECTRIC DRIVEN; 3 PHASE; 2 HP; 60 HZ; AC; 208/416 V (CHAMPION PNEUMATIC MODEL OEH-34-60-ENG-1) FSN 4310-861-9823 (CHAMPION PNEUMATIC MODEL OEH-34-60-ENG-4) FSN 4310-695-1227 SINGLE-PHASE; 2 HP; 60 HZ; AC; 115/230 V (CHAMPION PNEUMATIC MODEL OEH-34-60-ENG-2) FSN 4310-088-1855 (CHAMPION PNEUMATIC MODEL OEH-34-60-ENG-3) FSN 4310-075-3310



HEADQUARTERS, DEPARTMENT OF THE ARMY  
MAY 1969



CHANGE }  
 No. 1 }

HEADQUARTERS  
 DEPARTMENT OF THE ARMY  
 WASHINGTON, D. C., 12 February 1970

**Organizational Maintenance Repair Parts and  
 Special Tools List**

COMPRESSOR, RECIPROCATING: AIR; 5 CFM; 175 PSI; HAND TRUCK MOUNTED;  
 GASOLINE DRIVEN (CHAMPION PNEUMATIC MODEL LP-512-ENG) LESS ENGINE  
 FSN 4310-861-9820 (CHAMPION PNEUMATIC MODEL LP-512-ENG-1) LESS ENGINE  
 FSN 4310-079-6290 RECEIVER MOUNTED, ELECTRIC DRIVEN; 3 PHASE; 2 HP;  
 60 HZ; AC; 208/416V (CHAMPION PNEUMATIC MODEL OEH-34-60-ENG-1 ) FSN  
 4310-861-9823 (CHAMPION PNEUMATIC MODEL OEH-34-60-ENG-4) FSN 4310-  
 695-1227 SINGLE-PHASE; 2 HP; 60 HZ; AC; 115/230V (CHAMPION PNEUMATIC  
 MODEL OEH-34-60-ENG-2) FSN 4310-088-1855 (CHAMPION PNEUMATIC MODEL OEH-  
 34-60-ENG-3) FSN 4310-075-3310

Current as of 7 October 1969

TM 5-4310-241-20P, 6 May 1969 is changed as follows:

Page v, paragraph 4e is added as follows:

e. Action change codes indicated in the left hand margin of the listing page denote the following:

N — Indicates an added item not included in previous publication.

C — Indicates a change in data.

F — Indicates a change in FSN only.

All changes, additions or deletions of Federal stock numbers or manufacturer's part numbers within these changes should be appropriately reflected in the index.

Section II and IV. Change, add or delete as shown on the following pages.

Page vii, Section II. Add the following: GROUP 03. Fuel System 0306-TANKS, LINES, FITTINGS 2910-014-6964 STRAINER ASSEMBLY; Col 4d(2).

Page vii, Section II; Group 0401, add the following item: 2990-012-2557 ADAPTER, Col 4d(2)

Page vii, Section II. Add the following: GROUP 15. FRAME 1501-FRAME ASSEMBLY 4310-012-2254 TIP, Col 4d(2)

Page viii, Section II; add the following: GROUP 50. PNEUMATIC EQUIPMENT 5010-COMPRESSOR COOLING 4730-103-5461 FITTING, Col 4d(2)

PAGE	SMR CODE & INDEX NO	FEDERAL STOCK NO.	DESCRIPTION	UNIT OF MEAS	QTY INC IN UNIT	15-DAY ORG MAINT ALW				ILLUS- TRATION	
						1-5	6-20	21-50	51-100	FIG NO	ITEM NO
SECTION IV. REPAIR PARTS FOR ORGANIZATIONAL MAINTENANCE 0306-TANKS, LINES, FITTINGS											
C	3	P 00043 4310-369-7405	TANK ASSEMBLY*** Z257 (11568)			*	*	*	*		
C		P 00048 2910-014-6964	STRAINER ASSEMBLY*** Z257-4 (11568) 0401-MUFFLER AND PIPES			*	*	*	2		
C	4	P 0054 2990-012-2557	ADAPTER * * * M552 (11568) 1501-FRAME ASSEMBLY			*	*	*	2		
C	7	P 00113 4310-012-2254	TIP * * * Z261-19 (11568) 5007-COMPRESSOR DRIVE			*	*	*	2		
C	30	00451 4310-860-0035	FLYWHEEL,COMPRESSOR NR4-7 (11568)								
C		00452	DELETE ENTIRE LINE								
C		00453	DELETE ENTIRE LINE								
C	31	P 00476 4310-012-2235	5008-AIR INTAKE								
C	32	00482	CLAMP* * * M52 (11568) PLATE * * * M54BL (11568)								
F		00486 2990-105-2596	FILTER ASSEMBLY* * * Z64A (11568)			*	*	*	*		
C	37	P 00551 4730-103-5461	5010-COMPRESSOR COOLING FITTING*** RE10-99 (11568)			*	*	*	2		

By Order of the Secretary of the Army:

W.C. WESTMORELAND,  
*General, United States Army,*  
*Chief of Staff.*

Official:

KENNETH G. WICKHAM,  
*Major General, United States Army,*  
*The Adjutant General.*

Distribution:

To be distributed in accordance with DA Form 12-25, Sec I (qty rqr Block #6), Organizational maintenance requirements for Air Compressors, 5 CFM.

• ✱ U S. GOVERNMENT PRINTING OFFICE: 1970-390-940/1480



ORGANIZATIONAL MAINTENANCE REPAIR PARTS AND SPECIAL TOOLS LIST

COMPRESSOR, RECIPROCATING: AIR, 5 CFM; 175 PSI; HAND TRUCK MOUNTED; GASOLINE DRIVEN (CHAMPION PNEUMATIC MODEL LP-512-ENG) LESS ENGINE FSN 4310-861-9820 (CHAMPION PNEUMATIC MODEL LP-512-ENG-1) LESS ENGINE FSN 4310-079-6290 RECEIVER MOUNTED, ELECTRIC DRIVEN; 3 PHASE; 2 HP; 60 HZ; AC; 208/416 V (CHAMPION PNEUMATIC MODEL OEH-34-60-ENG-1) FSN 4310-861-9823 (CHAMPION PNEUMATIC MODEL OEH-34-60-ENG-4) FSN 4310-695-1227 SINGLE-PHASE; 2 HP; 60 HZ; AC; 115/230 V (CHAMPION PNEUMATIC MODEL OEH-34-60-ENG-2) FSN 4310-088-1855 (CHAMPION PNEUMATIC MODEL OEH-34-60-ENG-3) FSN 4310-075-3310

Current as of 24 March 1969

	<i>Paragraph</i>	<i>Page</i>
SECTION I. INTRODUCTION		
Scope-----	1	iii
General-----	2	iii
Explanation of columns-----	3	iii
Special information-----	4	iv
How to locate repair parts-----	5	v
Abbreviations-----	6	v
Federal supply codes for manufacturers-----	7	v
Recommendations for maintenance manual improvements-----	8	v
II. PRESCRIBED LOAD ALLOWANCE		
III. SPECIAL TOOLS, TEST AND SUPPORT EQUIPMENT FOR ORGANIZATIONAL MAINTENANCE NOT APPLICABLE		
IV. REPAIR PARTS FOR ORGANIZATIONAL MAINTENANCE		
Group 01. Engine		
0100 Engine assembly-----		1
0102 Crankshaft-----		1
08. Fuel System		
0306 Tanks, lines, fittings-----		2
04. Exhaust System		
0401 Muffler and pipes-----		4
10. Front Axle		
1000 Front axle assembly-----		4
13. Wheels and Tracks		
1311 Wheel assembly-----		4
1313 Tires, tubes-----		6
15. Frame		
1501 Frame assembly-----		6
22. Body Chassis and Hull, and Accessory Items		
2202 Accessory Items-----		9
2210 Data plates and instruction holders-----		10

\* This manual together with TM 5-4310-241-35P, 6 May 1969, supersedes TM 5-4310-241-25P, 24 October 1962, C 2, 5 May 1965.

	<i>Paragraph</i>	<i>Page</i>
40. Electric Motors and Generators (Other Than Engine Accessories)		
4000 Motor assemblies-----		10
4005 Frame supports and housings-----		11
4007 Drive components-----		12
4010 Master or auxiliary control assembly-----		13
4012 Switches-----		22
47. Gages (Non-Electrical), Weighing and Measuring Devices		
4702 Gages, mountings, lines and fittings-----		22
50. Pneumatic Equipment		
5000 Air compressor assembly-----		23
5001 Crankcase, block, cylinder head-----		25
5002 Crankshaft-----		27
5005 Valves, camshaft and timing mechanism-----		27
5006 Lubrication system-----		29
5007 Compressor drive-----		29
5008 Air intake-----		31
Unloader system components-----		33
5010 Compressor cooling-----		37
5014 Air receiver-----		39
5015 Air discharge system-----		41
95. General Use Standardized Parts		
9501 Bulk material-----		4 2

SECTION V. FEDERAL STOCK NUMBER AND REFERENCE NUMBER INDEX



## SECTION I

### INTRODUCTION

#### 1. Scope

This manual lists repair parts required for the performance of organizational maintenance of the air compressor.

#### 2. General

*a.* The Repair Parts List is arranged as follows:

(1) Individual parts and major assemblies are listed alphabetically by item name within the numbered functional groups.

(2) Assembly components and subassemblies are indented and listed alphabetically by item name under major assemblies.

*b.* This Repair Parts and Special Tools List is divided into the following sections:

(1) *Prescribed Load Allowance (PLA)*—Section II. A consolidated listing of repair parts quantitatively allocated for initial stockage at the organizational level. *This is a mandatory stockage allowance.*

(2) *Special Tools, Test and Support Equipment*—Section III. A list of special tools, test and support equipment authorized for the performance of maintenance at the organizational level (not applicable).

(3) *Repair Parts for Organizational Maintenance*—Section IV. A list of repair parts authorized for the performance of maintenance at the organizational level.

(4) *Federal Stock Number and Reference Number Index*—Section V. A list of Federal Stock numbers followed by reference numbers in ascending alpha-numeric sequence, cross-referenced to index number.

#### 3. Explanation of Columns

The following provides an explanation of columns in the tabular lists in sections II, III, and IV:

*a. Source, Maintenance and Recoverability Codes (SMR):*

(1) Source code, indicates the selection status and source for the listed item. Source codes are:

<i>Code</i>	<i>Explanation</i>
P	Applied to repair parts which are stocked in or supplied from DSA/GSA or Army supply system, and authorized for use at indicated maintenance categories.
M	Applied to repair parts which are not procured or stocked but are to be manufactured at indicated maintenance categories.
A	Applied to assemblies which are not procured or stocked as such but are made up of two or more units, each of which carry individual stock numbers and descriptions and are procured and stocked and can be assembled by units at indicated maintenance categories.
X	Applied to parts and assemblies which are not procured or stocked, the mortality of which is normally below that of the applicable end item, and the failure of which should result in retirement of the end item from the supply system.
XI	Applied to repair parts which are not procured or stocked, the requirement for which will be supplied by use of the next higher assembly or components.
X2	Applied to repair parts which are not stocked. The indicated maintenance category requiring such repair parts will attempt to obtain them through cannibalization; if not obtainable through cannibalization, such repair parts will be requisitioned with supporting justification through normal supply channels.
C	Applied to repair parts authorized for local procurements. If not obtainable from local procurement, such repair parts will be requisitioned through normal supply channels with a supporting statement of nonavailability from local procurement.
G	Applied to major assemblies that are procured with PEMA (Procurement Equipment Missile Army) funds for initial issue only to be used as exchange assemblies at DSU and GSU maintenance level. These assemblies will not be stocked above DSU and GSU or returned to depot supply level.

*Note.* Source code is not shown on common hardware items known to be readily available in Army supply channels and through local procurement.

(2) Maintenance code, indicates the lowest category of maintenance authorized to install the listed item. The maintenance level code is:

<i>Code</i>	<i>Explanation</i>
0	Organizational maintenance

(3) Recoverability code, indicates whether unserviceable items should be returned for re-

covery or salvage. Items not coded are expendable. Recoverability codes are:

Code	Explanation
R	Applied to repair parts and assemblies which are economically repairable at DSU and GSU activities and normally are furnished by supply on an exchange basis.
T	Applied to high dollar value recoverable repair parts which are subject to special handling and are issued on an exchange basis. Such repair parts normally are repaired or overhauled at depot maintenance activities.
U	Applied to repair parts specifically selected for salvage by reclamation units because of precious metal content, critical materials, high dollar value reusable casings or castings.

(4) This column also lists, below the *SMR* code, an index number for each item in ascending numerical sequence, which is used to locate items in the publication when the Federal stock number and/or reference number is known.

*b. Federal Stock Number:* This column indicates the Federal stock number for the item.

*c. Description:* This column indicates the Federal item name and any additional description of the item required. A part number or other reference number is followed by the applicable five-digit Federal supply code for manufacturers in parentheses. Materiel required for manufacture or fabrication is identified.

*d. Unit of Issue:* This column indicates the unit used as a basis for issue, e.g., ea, pr, ft, yd, etc.

*e. Quantity Incorporated in Unit Pack:* This column indicates the actual quantity contained in the unit pack,

*f. Quantity Incorporated in Unit:* This column indicates the quantity of the item used in the functional group.

*g. Fifteen-Day Organizational Maintenance Allowance, Column (4) of Section II and Column (7) of Section III and IV.*

(1) The allowance columns are divided into four subcolumns. Indicated in each subcolumn is the quantity of items authorized for the number of equipments supported. Items authorized for use as required but not for initial stockage are identified with an asterisk in the allowance column.

(2) The quantitative allowances for organizational level of maintenance represents one initial prescribed load for a 15-day period for the number of equipments supported. Units and organizations authorized additional prescribed loads will multiply the number of prescribed loads authorized by the quantity of repair parts reflected in the appropriate density column appli-

cable to the number of items supported to obtain the total quantity of repair parts authorized.

(3) Organizational units providing maintenance for more than 100 of these equipments shall determine the total quantity of parts required by converting the equipment quantity to a decimal factor by placing a decimal point before the next to last digit of the number to indicate hundredths, and multiplying the decimal factor by the parts quantity authorized in the 51-100 allowance column. Example, authorized allowance for 51-100 equipments is 40; for 150 equipments multiply 40 by 1.50 or 60 parts required.

(4) Subsequent changes to allowances will be limited as follows: No change in the range of items is authorized. If additional items are considered necessary, recommendation should be forwarded to U.S. Army Mobility Equipment Command for exception or revision to the allowance list. Revisions to the range of items authorized will be made by this Command based upon engineering experience, demand data, or TAERS information.

*h. Illustration, Column (8).* This column is divided as follows:

(1) **Figure Number Column (8) (a).** Indicates the figure number of the illustration in which the item is shown.

(2) **Item Number, Column (8) (b).** Indicates the callout number used to reference the item in the illustration.

#### 4. Special Information

*a.* Identifications of the usable on codes included in column 2 of section II and column 3 of sections III and IV of this publication are:

Code	Used On
A-----	Compressor, model LP-512-ENG, Gasoline Driven
B-----	Compressor, model OEH 34-60-ENG 1, Electric motor driven
C-----	Compressor, model OEH-34-60-ENG 2, Electric motor driven
D-----	Compressor, model OEH-34-60-ENG 3, Electric motor driven
E-----	Compressor, model OEH-34-60-ENG 4, Electric motor driven
F-----	Compressor, model LP-512-ENG-1, Gasoline driven

Repair parts not symbolized are applicable to all models. Refer to TM 5-2805-206-24P for information on repair parts and allowances for the MIL STD ENGINE 1A08-1 and 1A08-2.

*b.* Repair parts mortality has been based on 1,000 hours of operation per year.

*c.* Parts which require manufacture or assembly at a category higher than that authorized

for installation will indicate in the source column the higher category.

d. The following publications pertain to the air compressor and its components:

- TM 5-4310-241-15** Organizational, DS, GS, and depot maintenance manual.
- TM 5-4310-241-35P** DS, GS, and depot maintenance repair parts and special tool lists.
- LO 5-4310-241-15** Lubrication Order.

### 5. How to Locate Repair Parts

a. When Federal stock number or reference number is unknown:

(1) *First.* Using the table of contents, determine the functional group within which the repair part belongs.

(2) *Second.* Find the illustration covering the functional group to which the repair part belongs.

(3) *Third.* Identify the repair part on the illustration, and note the illustration figure and item number of the repair part.

(4) *Fourth.* Using the repair parts listing, find the functional group to which the repair part belongs and locate the illustration figure and item number noted on the illustration.

b. When Federal stock number or reference number is known:

(1) *First.* Using the index of Federal stock numbers and reference numbers, find the pertinent Federal stock number or reference number. This index is in ascending alpha-numeric sequence cross-referenced to an index number.

(2) *Second.* Using the repair part listing, find the index number referenced in the index of Federal stock numbers and reference numbers.

### 6. Abbreviations

- awg -----American Wire Gage
- dia-----diameter
- ea-----each
- Ft-----Feet (foot)
- grp-----Group
- hp-----Horsepower
- id-----Inside Diameter
- in.-----inch
- lb-----Pound
- lg-----long
- lh-----Left hand
- max-----maximum
- min-----minute

- mtg-----mounting
- No.-----number(s)
- od-----outside diameter
- psi-----pounds per square inch
- rh-----right hand
- sh-----sheet(s)
- sq-----square
- thd-----thread
- thk-----thick
- v-----volts
- w/-----with
- w-----watt, wide (width)

### 7. Federal Supply Codes for Manufacturers

<i>Code</i>	<i>Manufacturer</i>
08070-----	Tru-Flate Division Parker-Hannifin Corp.
08645-----	Briggs and Stratton Corp.
11431-----	Gleason Corp.
11568-----	Champion Pneumatic Machinery Co., Inc.
14959-----	Crane Co.
21810-----	Federal Pacific Electric Co.
23826-----	Furnas Electric Co.
25472-----	Goodrich B. F. Co., The
26403-----	Grinnell Co., Inc.
30327-----	Imperial-Eastman Corp.
38151-----	Marathon Electric Mfg. Corp.
71342-----	Cash A. W. Valve Mfg. Corp.
72800-----	Eaton Yale and Towne, Inc. Reliance Division
72962-----	Elastic Stop Nut Corp. of America
73559-----	Cabling Electric, Inc.
74545-----	Hubbell Harvey, Inc.
75336-----	Kingston, F. C. Co.
79150-----	Victor Mfg. and Gasket Co.
79807-----	Wrought Washer Mfg. Co.
80201-----	Chicago Rawhide Mfg. Co.
81336-----	Chief of Engineers
86285-----	Cornell E. H. Co.
86823-----	Roth Roy E. Co.
87005-----	Madden Brass Products Co. Division of Robinair Mfg Corp.
87764-----	Universal Screw and Bolt Co.
91895-----	Marshall Brass Co.
92976-----	Kaddis A. G. Screw Products, Inc.
94894-----	Milton Manufacturing Co., Inc.
96906-----	Military Standards Promulgated by Standardization Division Directorate of Logistic Services DSA

### 8. Recommendations for Maintenance Manual Improvements

Report of errors, omissions, and recommendations for improving this publication by the individual user is encouraged. Reports should be submitted on DA Form 2028 (Recommended Changes to DA Publications) and forwarded direct to Commanding General, U. S. Army Mobility Equipment Command, ATTN: AMSME-MPP, 4300 Goodfellow Boulevard, St. Louis, Mo. 63120.



## SECTION II

## PRESCRIBED LOAD ALLOWANCE

(1)	(2)	(3)	(4)	(5)	(6)	(7)	(8)
FEDERAL STOCK NUMBER	DESCRIPTION	QTY INC IN UNIT PACK	15-DAY (A)	ORG (B)	MAINT (C)	ALW (D)	
	USEABLE ON CODE		1-5	6-20	21-50	51-100	
	GROUP 04-EXHAUST SYSTEM 0401-MUFFLER AND PIPES						
2990-269-7145	MUFFLER	A					2
	GROUP 22-BODY CHASSIS AND HULL AND ACCESSORY ITEMS						
	2202-ACCESSORY ITEMS						
4310-873-1767	HOSE ASSEMBLY	A, F					2
4310-874-3179	HOSE ASSEMBLY	D					2
4310-874-3179	HOSE ASSEMBLY	B,C,E					2
	GROUP 40-ELECTRIC MOTORS AND GENERATORS (OTHER THAN ENGINE ACCESSORIES)						
	4010-MASTER OR AUXILIARY CONTROL ASSEMBLY						
2920-834-8474	SET, RENEWAL						2
4310-877-2625	HEATER	B			2		2
5930-430-4071	SWITCH, PRESSURE						2
5930-430-4071	SWITCH, PRESSURE	E					2
5930-521-8471	REPAIR, KIT	B, C		2	2		4
6110-757-1758	HEATER	B					2
6110-877-2626	CONTACT ASSEMBLY	B					2
6110-877-2626	CONTACT ASSEMBLY	C					2
6110-883-4227	CONTACT, ELECTRICAL	D					2
6110-883-4227	CONTACT, ELECTRICAL	C					2
6110-883-4227	CONTACT, ELECTRICAL	B			2		2
6110-883-4227	CONTACT, ELECTRICAL	E			2		2
6110-887-2626	CONTACT ASSEMBLY	D					2
6110-887-2626	CONTACT ASSEMBLY	E					2
6110-887-2627	CONTACT, ELECTRICAL	B			2		2
6110-887-2627	CONTACT, ELECTRICAL	C					2
6110-887-2627	CONTACT, ELECTRICAL	D					2
6110-887-2627	CONTACT, ELECTRICAL	E			2		2
6110-887-4466	HEATER, OVERLOAD	D					2
6610-532-7789	HEATER, OVERLOAD	D					2
4310-877-2625	HEATER, OVERLOAD	E					2
	FAO (21810)						
4310-877-2624	HEATER, OVERLOAD F4-0 (21810)						2
	GROUP 47-GAGES (NON-ELECTRICAL), WEIGHING AND MEASURING DEVICES						
	4702-GAGES, MOUNTINGS, LINES AND FITTINGS						
4310-327-6438	HOSE ASSEMBLY	A, F					2
	GROUP 50-PNEUMATIC EQUIPMENT						
	5000-AIR COMPRESSOR						
4310-066-4206	GASKET SET	D, E, F		2	2		4
4310-882-5057	GASKET SET	A, B, C		2	2		4
4310-887-2622	KIT, VALVE ASSEMBLY	E			2		2

(1) FEDERAL STOCK NUMBER	(2) DESCRIPTION  USEABLE ON CODE	(3) QTY INC IN UNIT PACK	(4) 15-DAY (A)	ORG (B)	MAINT (C)	ALW (D)
			1-5	6-20	21-50	51-100
	5005-VALVES, CAMSHAFT AND TIMING SYSTEM					
5330-584-9010	GASKET			2	2	4
5330-599-5888	GASKET			2	2	4
5330-882-5056	GASKET SET	D		2	2	4
	5007-COMPRESSOR DRIVE					
3030-243-7256	BELT, V	A, F		2	2	4
3030-251-3941	BELT, V	B, C, D, E		2	2	4
	5009-UNLOADER SYSTEM COMPONENTS					
4310-877-2622	PARTS KIT				2	2

(1)	(2)	(3)	(4)	(5)	(6)	(7)				(8)		
SMR CODE INDEX NO	FEDERAL STOCK NUMBER	DESCRIPTION  REFERENCE NO & MFR CODE	USABLE ON CODE	UNIT OF ISSUE	QTY INC IN UNIT PACK	QTY INC IN UNIT	15-DAY MAINTENANCE (A)	ORGANIZATIONAL ALW (B)	(C)	(D)	ILLUS- TRATION (A) FIG NO	(B) ITEM NO
SECTION IV - REPAIR PARTS FOR ORGANIZATIONAL MAINTENANCE												
00001		GROUP 01 - ENGINE										
00002		0100 - ENGINE ASSEMBLY										
X2 O 00003	2805-993-4199	BRACKET, ENGINE MOUNTING M502A (11568)	AF	EA		2					5	5
P O T 00004	2805-601-5181	ENGINE, GASOLINE: 1 1/2 HP, MILITARY STANDARD ENGINE, MODEL 1A08-1 1A08-1 (81336)	A	EA		1	*	*	*	*	5	1
P O T 00005	2805-714-8552	ENGINE, GASOLINE: 1 1/2 HP, MILITARY STANDARD ENGINE, MODEL 1A08-2 1A08-2 (81336)	F	EA		1	*	*	*	*	5	1
O 00006	5310-050-3275	NUT, SELF-LOCKING, HEXAGON: ENGINE MTG,BRACKET TO FRAME	AF	EA		4	*	*	*	*	5	10
O 00007	5305-269-3211	SCREW, CAP, HEXAGON HEAD: ENGINE MTG,BRACKET FRAME, CROSS BAR AND SPACER	A	EA		2	*	*	*	*	5	8
O 00008	5305-068-0502	SCREW, CAP, HEXAGON HEAD: ENGINE MTG,BRACKET TO ENGINE	AF	EA		12	*	*	*	*	5	7
O 00009	5305-021-5466	SCREW, CAP, HEXAGON HEAD: ENGINE MTG, BRACKET TO FRAME	F	EA		4	*	*	*	*	5	8
O 00010	5305-021-5466	SCREW, CAP, HEXAGON HEAD: ENGINE MTG, BRACKET TO FRAME PLATE, FRONT	A	EA		2	*	*	*	*	5	8
X2 O 00011		SPACER: ENGINE MTG, ALUMINUM, 1 IN. W, 6 7/8 IN. LG, 1/4 IN. THK M617 (11568)	A	EA		1					6	9
X2 O 00012		SPACER: ENGINE MTG, ALUMINUM, 1 IN. W, 6 7/8 IN. LG, 1/4 IN. THK M617 (11568)	F	EA		2					6	9
O 00013	5310-087-7493	WASHER, FLAT: ENGINE MTG, BRACKET TO FRAME	AF	EA		4	*	*	*	*	5	9
O 00014	5310-012-1753	WASHER, LOCK: ENGINE MTG, BRACKET TO ENGINE	AF	EA		12	*	*	*	*	5	6
O 00015		0102 - CRANKSHAFT										
O 00016	5315-043-1787	KEY, WOODRUFF: ENGINE CRANKSHAFT, DRIVE PULLEY MTG	AF	EA		1	*	*	*	*	5	15
O 00017	5310-762-6213	NUT, PLAIN, HEXAGON: ENGINE PULLEY SLEEVE, JAM	AF	EA		1	*	*	*	*	5	12
X2 O 00018	4310-828-8558	PULLEY, GROOVE: ENGINE 2-1-2X1-1-2-2AL (11568)	A	EA		1					5	14

(1) SMR CODE INDEX NO.	(2) FEDERAL STOCK NUMBER	(3) DESCRIPTION	USEABLE ON CODE	(4) UNIT OF ISSUE	(5) QTY INC IN UNIT PACK	(6) QTY INC IN UNIT	(7) 15-DAY INC (A)	ORG (B)	MAINT (C)	ALW (D)	(8) ILLUS- TRATION (A) FIG NO.	(B) ITEM NO.
X2 O 00019		PULLEY, GROOVE: ENGINE 21-2X3-42VA (11568)	F		EA	1					5	14
X2 O 00020	4310-819-4222	SLEEVE, TAPER: ENGINE PULLEY M634 (11568)	AF		EA	1					5	13
00021		GROUP 03 - FUEL SYSTEM										
00022		0306 - TANKS, LINES, FITTINGS										
X2 O 00023		BOLT, U: FUEL TANK MTG, 1/4-20 THD SIZE, 6 IN. LG, 4 9/16 IN. W M607 (11568)	AF		EA	2					6	22
X2 O 00024		BRACKET: FUEL TANK MTG M606 (11568)	AF		EA	2					6	1
X2 O 00025		CLAMP, FUEL LINE: FUEL HOSE TO FRAME 5L19217 (11568)	F		EA	1						
X2 O 00026		CLAMP, HOSE: HOSE TO FUEL LINE 8R (72800)	F		EA	2						
O 00027	4730-221-3902	ELBOW, PIPE TO TUBE: FUEL LINE TO FILTER AND TANK	A		EA	2	*	*	*	*	6	23
M O 00028		HOSE, FUEL M694 (11568) MANUFACTURE FROM:	F		EA	1						
P O 00029	4720-807-8253	HOSE, FUEL (1 FT. REQUIRED)	F		FT		SEE GRP 9501					
M O 00030		LINE ASSEMBLY: FUEL FILTER TO TANK MANUFACTURE FROM:	A		EA	1					6	24
O 00031	4730-142-1593	INVERTED NUT, TUBE COUPLING: FUEL LINE TO FILTER AND TANK ELBOWS	A		EA	2	*	*	*	*		
P O 00032	4710-277-5525	TUBE, COPPER (3 FT. 3 IN. REQUIRED)	A		FT		SEE GRP 9501					
M O 00033		LINE, FUEL M538A3 (11568) MANUFACTURE FROM:	F		EA	1						
P O 00034	4710-277-5525	TUBE, COPPER (3 IN. REQUIRED)	F		FT		SEE GRP 9501					



(1)	(2)	(3)		(4)	(5)	(6)	(7)				(8)	
SMR CODE INDEX NO	FEDERAL STOCK NUMBER	DESCRIPTION  REFERENCE NO & MFR CODE	USABLE ON CODE	UNIT OF ISSUE	QTY INC IN UNIT PACK	QTY INC IN UNIT	15-DAY ORGANIZATIONAL MAINTENANCE ALW (A) (B) (C) (D)				ILLUS- TRATION (A) FIG NO	(B) ITEM NO
M O 00035		LINE, FUEL M538A36 (11568) MANUFACTURE FROM:	F	EA		1						
P O 00036	4710-277-5525	TUBE, COPPER (36 IN. REQUIRED)	F	FT			SEE GRP 9501					
O 00037	4730-196-2054	NIPPLE, PIPE: ENGINE TO FILTER, FUEL LINE	AF	EA	1	*	*	*	*			
X2 O 00038		NUT, SELFT-LOCKING, HEXAGON: FUEL TANK MTG 29NE040 (72962)	AF	EA	4						6	25
O 00039	4730-289-1959	NUT, TUBE COUPLING: FUEL TO FILTER AND TANK ELBOWS	F	EA	2	*	*	*	*			
X2 O 00040		SCREW, SELF TAPPING: FUEL LINE CLAMP ON FRAME N06X1-2 (87764)	F	EA	1							
M O 00041		STRIP, ANTI-VIBRATION: FUEL TANK BRACKET, 3 IN. LG MANUFACTURE FROM:	A	EA	2						6	2
P O 00042	8305-430-9284	WEBBING, TEXTILE (3 IN. REQUIRED FOR EACH STRIP)	A	FT			SEE GRP 9501					
X2 O 00043		TANK ASSEMBLY, FUEL Z257 (11568)	AF	EA	1						6	8
P O 00044	2910-705-7814	CAP AND CHAIN, FUEL TANK (CHAIN SOLDERED TO TANK) Z257-2 (11568)	AF	EA	1	*	*	*	*		6	5
M O 00045	2910-992-6370	GASKET: FUEL TANK CAP Z257-3 (11568) MANUFACTURE FROM:	AF	EA	1						6	4
P O 00046	5330-298-5674	CORK, SHEET (3 IN. X 3 IN. REQUIRED)	AF	SH			SEE GRP 9501					
O 00047	4730-018-9566	PLUG, PIPE: FUEL TANK DRAIN	AF	EA	1	*	*	*	*		6	7
X2 O 00048		STRAINER ASSEMBLY: FUEL TANK Z257-4 (11568)	AF	EA	1						6	3
X1 00049		TANK, FUEL Z257-1 (11568)	AF	EA	1						6	6
X2 O 00050		WASHER: FUEL TANK MTG NUT 1-4W (79807)	AF	EA	4							

(1) SMR CODE INDEX NO.	(2) FEDERAL STOCK NUMBER	(3) DESCRIPTION		(4) ISSUE OF UNIT	(5) QTY INC IN UNIT PACK	(6) QTY INC IN UNIT	(7) 15-DAY ORGANIZATIONAL MAINTENANCE ALW				(8) ILLUS- TRATION	
		REFERENCE NO. & MFR. CODE	USABLE ON CODE				(a)	(b)	(c)	(d)	(a) FIG NO.	(b) ITEM NO.
							1-5	6-20	21-50	51-100		
X2 O 00051		WASHER, LOCK: FUEL LINE TO FRAME CLAMP 6ETL (79807)	F	EA	1							
00052		GROUP 04 - EXHAUST SYSTEM										
00053		0401 - MUFFLER AND PIPES										
X2 O 00054		ADAPTER, MUFFLER M552 (11568)	A	EA	1						5	2
P O 00055	2990-269-7145	MUFFLER, EXHAUST 89966 (08645)	A	EA	1	*	*	*		2	5	3
00056		GROUP 10 - FRONT AXLE										
00057		1000 - FRONT AXLE ASSEMBLY										
X2 O 00058		AXLE, HAND TRUCK Z261-9 (11568)	AF	EA	1						8	10
O 00059 00060	5315-811-6491	PIN, SPRING: AXLE	AF	EA	2	*	*	*	*		8	8
00061		GROUP 13 - WHEELS AND TRACKS										
		1311 - WHEEL ASSEMBLY										
O 00062	5315-839-5822	PIN, COTTER: COMPRESSOR HAND TRUCK WHEEL MTG	AF	EA	2	*	*	*	*		7	13
O 00063	5310-543-4488	WASHER, FLAT: COMPRESSOR HAND TRUCK WHEEL MTG	A	EA	2	*	*	*	*		7	12
X2 O 00064		WASHER, FLAT: WHEEL HUB SPACER, 21/32 IN. ID, 29/32 IN. OD, 0.095 IN. THK Z261-17 (11568)	A	EA	6						7	14
X2 O 00065		WHEEL ASSEMBLY: COMPRESSOR HAND TRUCK SD494 (11568)	A	EA	2						7	
X1 00066		DISK: COMPRESSOR HAND TRUCK WHEEL, INNER B356-109 (11568)	A	EA	2						7	9
X1 00067		DISK: COMPRESSOR HAND TRUCK WHEEL, OUTER B356-110 (11568)	A	EA	2						7	6

(1)	(2)	(3)		(4)	(5)	(6)	(7)				(8)			
SMR CODE INDEX NO	FEDERAL STOCK NUMBER	DESCRIPTION  REFERENCE NO & MFR CODE	USABLE ON CODE	UNIT OF ISSUE	QTY INC IN UNIT PACK	QTY INC IN UNIT	15-DAY MAINTENANCE	ORGANIZATIONAL ALW	(A)	(B)	(C)	(D)	ILLUS- TRATION (A) FIG NO	(B) ITEM NO
X2 O 00068		HUB ASSEMBLY: COMPRESSOR HAND TRUCK WHEEL AW586 (11568)	A	EA		2						7	4	
X2 O 00069		BEARING, BALL: COMPRESSOR HAND TRUCK WHEEL HUB, 0.630 MIN, 0.634 MAX, ID BORE, UNGROUND B22-10 (11568)	A	EA		4						7	3	
X2 O 00070		BOLT, RIBBED SHOULDER: COMPRESSOR HAND TRUCK SIDE PLATES TO HUB MTG, 3/8-24 THD SIZE, 3/4 IN. LG AW533 (11568)	A	EA		8						7	15	
X2 O 00071		COVER, DUST: COMPRESSOR HAND TRUCK WHEEL HUB AW14-6 (11568)	A	EA		4						7	1	
O 00072	4730-365-0231	FITTING, LUBRICATION: COMPRESSOR HAND TRUCK WHEEL HUB	A	EA		2	*	*	*	*				
M O 00073		WASHER, FELT: COMPRESSOR HAND TRUCK WHEEL HUB GREASE SEALS MANUFACTURE FROM:	A	EA		4						7	2	
P O 00074	8305-262-2543	FELT, STRIP (2 IN. X 2 IN. REQUIRED FOR EACH WASHER)	A	FT			SEE GRP 9501							
O 00075	5310-543-5653	NUT, PLAIN, HEXAGON: WHEEL SIDE PLATE BOLTS	A	EA		20	*	*	*	*		7	11	
O 00076	5305-638-8908	SCREW, CAP, HEXAGON HEAD: COMPRESSOR HAND TRUCK WHEEL SIDE PLATE SECURING	A	EA		1	*	*	*	*		7	5	
O 00077	5310-013-1099	WASHER, LOCK: COMPRESSOR HAND TRUCK WHEEL SIDE PLATES SECURING	A	EA		20	*	*	*	*		7	10	
X2 O 00078		WHEEL ASSEMBLY: HAND TRUCK A1560 (11431)	F	EA		2						7		
X2 O 00079		BEARING 559 (11431)	F	EA		2						7	3	
X2 O 00080		BOLT 306 (11431)	F	EA		6						7	15	
X2 O 00081		COVER 4201 (11431)	F	EA		4						7	1	
X1 00082		DISK 6460 (11431)	F	EA		2						7	9	

(1)	(2)	(3)		(4)	(5)	(6)	(7)				(8)		
SMR CODE INDEX NO	FEDERAL STOCK NUMBER	DESCRIPTION  REFERENCE NO & MFR CODE	USABLE ON CODE	UNIT OF ISSUE	QTY INC IN UNIT PACK	QTY INC IN UNIT	15-DAY ORGANIZATIONAL MAINTENANCE ALW (A) (B) (C) (D)				ILLUS- TRATION (A) FIG NO	(B) ITEM NO	
X1 00083		DISK 6461 (11431)	F	EA		2						7	6
X2 O 00084		FLANGE 4219 (11431)	F	EA		2							
X2 O 00085		NUT 955 (11431)	F	EA		10						7	11
X2 O 00086		NUT 307 (11431)	F	EA		6						7	11
X2 O 00087		SCREW 954 (11431)	F	EA		10						7	5
X2 O 00088		TUBE 841 (11431)	F	EA		2							
X2 O 00089		WASHER 4216 (11431)	F	EA		4						7	12
M O 00090		WASHER 919 (11431) MANUFACTURE FROM:	F	EA		4						7	2
P O 00091 00092	5330-262-2543	FELT, STRIP (2 IN. BY 2 IN. REQUIRED FOR EACH SEAL)  1313 - TIRES, TUBES	F	FT				SEE GRP 9501					
P O 00093	2610-051-9114	INNER TUBE, PNEUMATIC TIRE: COMPRESSOR HAND TRUCK WHEEL MS35392-48 (96906)	AF	EA		2	*	*	*	*		7	8
P O 00094 00095 00096	2610-050-9560	TIRE, PNEUMATIC: COMPRESSOR HAND TRUCK WHEEL MS35389-1 (96906)  GROUP 15 - FRAME  1501 - FRAME ASSEMBLY	AF	EA		2	*	*	*	*		7	
X2 O 00097	4310-839-6555	HAND TRUCK ASSEMBLY: COMPRESSOR MTG P2249B (11568)	A	EA		1						6	10
X2 O 00098		BUMPER, FRONT Z261-5 (11568)	A	EA		1						8	6

(1)	(2)	(3)		(4)	(5)	(6)	(7)				(8)	
SMR CODE INDEX NO	FEDERAL STOCK NUMBER	DESCRIPTION  REFERENCE NO & MFR CODE	USABLE ON CODE	UNIT OF ISSUE	QTY INC IN UNIT PACK	QTY INC IN UNIT	15-DAY MAINTENANCE (A)	ORGANIZATIONAL ALW (B)	(C)	(D)	ILLUS- TRATION (A) FIG NO	(B) ITEM NO
X2 O 00099		BUMPER, REAR Z261-4 (11568)	A	EA		1					8	3
X2 O 00100		FOOT, RUBBER: COMPRESSOR STAND Z261-18 (11568)	A	EA		2					8	12
X2 O 00101		GUSSET: LEG Z261-20 (11568)	A	EA		2					8	15
X2 O 00102		HANDLE, TRUCK: RH AND IH Z261-3 (11568)	A	EA		2					8	2
X2 O 00103		LEG, FRAME Z261-8 (11568)	A	EA		1					8	13
X2 O 00104		MEMBER, CROSS: HAND TRUCK Z261-2 (11568)	A	EA		5					8	17
X2 O 00105		NOSE, HAND TRUCK Z261-6 (11568)	A	EA		1					8	7
X2 O 00106		NUT, SELF-LOCKING, HEXAGON: FRAME MTG, CADMIUM OR ZINC PLATED, 1/4-20 THD SIZE 29NE040 (72962)	A	EA		28					8	5
X2 O 00107		RAIL, SIDE Z261-1 (11568)	A	EA		2					8	4
X2 O 00108		SCREW, MACHINE: CROSS MEMBER MTG, CADMIUM OR ZINC PLATED, 1/4-20 THD SIZE, 1 3/4 IN. LG Z261-10 (11568)		EA		10					8	18
O 00109	5305-988-1725	SCREW, MACHINE: FOOT MTG	A	EA		2	*	*	*	*	8	11
O 00110	5305-988-1727	SCREW, MACHINE: LEG TO RAIL MTG	A	EA		4	*	*	*	*	8	14
O 00111	5305-988-1170	SCREW, MACHINE: NOSE AND HANDLE MTG	A	EA		12	*	*	*	*	8	9
X2 O 00112		SHIM, CROSS MEMBER Z261-7 (11568)	A	EA		10					8	16
X2 O 00113		TIP, HANDLE: COMPRESSOR FRAME HANDLES, RUBBER, 1 1/8 IN. ID, (CRUTCH TIP) Z261-19 (11568)	A	EA		2					8	1

(1)	(2)	(3)		(4)	(5)	(6)	(7)				(8)			
SMR CODE INDEX NO	FEDERAL STOCK NUMBER	DESCRIPTION  REFERENCE NO & MFR CODE	USABLE ON CODE	UNIT OF ISSUE	QTY INC IN UNIT PACK	QTY INC IN UNIT	15-DAY MAINTENANCE	ORGANIZATIONAL ALW	(A)	(B)	(C)	(D)	ILLUS- TRATION (A) FIG NO	(B) ITEM NO
X2 O 00114		HAND TRUCK ASSEMBLY: COMPRESSOR MTG Z261B (11568)	F	EA		1						6	10	
X2 O 00115		BRACKET: ISOLATED MTG M657 (11568)	F	EA		1								
X2 O 00116		BUMPER, FRONT Z261-5A (11568)	F	EA		1						8	6	
X2 O 00117		FOOT, RUBBER: ISOLATOR MS651 (11568)	F	EA		2						8	12	
X2 O 00118		GUSSET: LEG Z261-20 (11568)	F	EA		2						8	15	
X2 O 00119		HANDLE, TRUCK: RH AND LH Z261-3 (11568)	F	EA		2						8	2	
X2 O 00120		LEG, FRAME Z261-8 (11568)	F	EA		1						8	13	
X2 O 00121		MEMBER, CROSS Z261-2A (11568)	F	EA		6						8	17	
X2 O 00122		NOSE, HAND TRUCK Z261-6A (11568)	F	EA		1						8	7	
X2 O 00123		NUT, LOCK Z261-13 (11568)	F	EA		31						8	5	
X2 O 00124		NUT, SELF-LOCKING 29NE040 (72962)	F	EA		2						8	5	
X2 O 00125		NUT, SELF-LOCKING 29NE058 (72962)	F	EA		2						8	5	
X2 O 00126		RAIL, SIDE Z261-1A 911568)	F	EA		2						8	4	
O 00127	5305-649-8115	SCREW, CAP, HEXAGON HEAD	F	EA		2	*	*	*	*				
X2 O 00128		SCREW, MACHINE: CROSS MEMBER MTG Z261-10 (11568)	F	EA		12						8	18	

(1)	(2)	(3)		(4)	(5)	(6)	(7)				(8)	
SMR CODE INDEX NO	FEDERAL STOCK NUMBER	DESCRIPTION  REFERENCE NO & MFR CODE	USABLE ON CODE	UNIT OF ISSUE	QTY INC IN UNIT PACK	QTY INC IN UNIT	15-DAY MAINTENANCE	ORGANIZATIONAL ALW (A) (B) (C)	(D)		ILLUS- TRATION (A) FIG NO	(B) ITEM NO
O 00129	5305-988-1725	SCREW, MACHINE: RUBBER ISOLATOR MTG	F	EA	2	*	*	*	*	8	11	
O 00130	5305-558-2679	SCREW, MACHINE: LEG TO RAIL MTG	F	EA	8	*	*	*	*	8	14	
X2 O 00131		SCREW, MACHINE: NOSE AND HANDLE MTG, 1/4-20 THD SIZE, 1 1/2 IN. LG X261-15 (11568)	F	EA	8					8	9	
X2 O 00132		TIP, HANDLE: FRAME HANDLES Z261-19 (11568)	F	EA	2					8	1	
X2 O 00133	2920-064-8834	STRAP, GROUND: ENGINE TO FRAME M640 (11568)	AF	EA	1					5	4	
X2 O 00134		WASHER Z261-17 (11568)	F	EA	4							
00135		GROUP 22 - BODY CHASSIS AND HULL, AND ACCESSORY ITEMS										
00136		2202 - ACCESSORY ITEMS										
X2 O 00137	4310-887-8765	CHUCK, AIR: TIRE INFLATING 699 (94894)	A	EA	1					13	11	
P O 00138	4910-204-2644	GAGE, AIR: TIRE INFLATING 7300CTDRC (08070)	DF	EA	1	*	*	*	*	14	6	
X2 O 00139		GAGE, INFLATION 730DCTDRG (08070)	E	EA	1					14	6	
X2 O 00140		GAGE, INFLATOR G1506 (94894)	B	EA	1					14	6	
X2 O 00141		GAGE, INFLATOR 730DCTDRC (08070)	C	EA	1					14	6	
P O 00142	4310-874-3179	HOSE ASSEMBLY, AIR Z538A (11568)	BCE	EA	1	*	*	2	2	14	7	
P O 00143	4310-874-3179	HOSE ASSEMBLY, RUBBER F538A (11568)	D	EA	1	*	*	*	2	14	7	
P O 00144	4310-873-1767	HOSE ASSEMBLY, RUBBER: AIR, 5/16 IN. ID Z538 (11568)	AF	EA	1	*	*	*	2	13	12	

(1)	(2)	(3)	(4)	(5)	(6)	(7)				(8)	
SMR CODE INDEX NO	FEDERAL STOCK NUMBER	DESCRIPTION  REFERENCE NO & MFR CODE	USABLE ON CODE	QTY INC UNIT OF ISSUE	QTY INC UNIT PACK	15-DAY MAINTENANCE (A)	ORGANIZATIONAL ALW (B)	(C)	(D)	ILLUS- TRATION (A) FIG NO	(B) ITEM NO
00145		2210 - DATA PLATES AND INSTRUCTION HOLDERS									
X2 O 00146		DIAGRAM, WIRING WD9920W (21810)	CDE	EA	1						
X2 O 00147		PLATE, IDENTIFICATION: COMPRESSOR PPMSM (11568)	ABCF	EA	1					1	8
X2 O 00148		PLATE, IDENTIFICATION: COMPRESSOR M645 (11568)	DE	EA	1					1	8
X2 O 00149		PLATE, IDENTIFICATION: MAGNETIC STARTER Y9389X (21810)	BCDE	EA	1					12	24
O 00150	5305-253-5612	SCREW, DRIVE: IDENTIFICATION PLATE MTG	ABCF	EA	2	*	*	*	*	1	7
O 00151	5305-012-1279	SCREW, DRIVE: IDENTIFICATION PLATE MTG	DE	EA	6	*	*	*	*	1	7
O 00152	5305-993-0184	SCREW, MACHINE: MAGNETIC STARTER IDENTIFICATION PLATE MTG	BCDE	EA	1	*	*	*	*	12	23
O 00153		GROUP 40 - ELECTRIC MOTORS AND GENERATORS (OTHER THAN ENGINE ACCESSORIES)									
00154		4000 - MOTOR ASSEMBLIES									
P O R 00155	6105-887-4469	MOTOR, ALTERNATING CURRENT: 2 HP, 115/230 V 184CSR29BBCW (38151) (ELECTRIC MOTORS AND REPAIR PARTS ARE TO BE REQUISITIONED BY COMPLETE IDENTIFYING NOMENCLATURE. COMPLETE MOTOR AND FRAME NAMEPLATE DATA MUST BE SHOWN ON THE REQUISITION TO INSURE SUPPLY OF THE PROPER REPAIR PARTS OR MOTOR)	C	EA	1	*	*	*	*	10	7
X2 OR 00156		MOTOR, ELECTRIC 184P4R2158 (38151) (ELECTRIC MOTORS AND REPAIR PARTS ARE TO BE REQUISITIONED BY COMPLETE IDENTIFYING NOMENCLATURE. COMPLETE MOTOR AND FRAME NAMEPLATE DATA MUST BE SHOWN ON THE REQUISITION TO INSURE SUPPLY OF THE PROPER REPAIR PARTS OR MOTOR)	E	EA	1					10	7
P O R 00157	6105-877-2629	MOTOR, ELECTRIC: 2 HP 184TSR27BB (38151) (ELECTRIC MOTORS AND REPAIR PARTS ARE TO BE REQUISITIONED BY COMPLETE IDENTIFYING NOMENCLATURE. COMPLETE MOTOR AND FRAME NAMEPLATE DATA MUST BE SHOWN ON THE REQUISITION TO INSURE SUPPLY OF THE PROPER REPAIR PARTS OR MOTOR)	BD	EA	1	*	*	*	*	10	7



(1)	(2)	(3)		(4)	(5)	(6)	(7)				(8)		
SMR CODE INDEX NO	FEDERAL STOCK NUMBER	DESCRIPTION  REFERENCE NO & MFR CODE	USABLE ON CODE	UNIT OF ISSUE	QTY INC IN UNIT PACK	QTY INC IN UNIT	15-DAY MAINTENANCE ALW	ORGANIZATIONAL (A)	(B)	(C)	(D)	ILLUS- TRATION (A) FIG NO	(B) ITEM NO
O 00158	5310-732-0558	NUT, PLAIN, HEXAGON: MOTOR TO RECEIVER BRACKET MTG	BCE	EA		4	*	*	*	*	10	6	
X2 O 00159	5310-010-2635	NUT, PLAIN, HEXAGON: MOTOR TO RECEIVER MTG 3-8N (87764)		EA		4					10	6	
X2 O 00160	5305-060-6800	SCREW, CAP, HEXAGON HEAD: MOTOR TO RECEIVER MTG 3-8-16X1-1-4CS (87764)		EA		4					10	3	
X2 O 00161	5305-010-0135	SCREW, CAP, HEXAGON HEAD: MOTOR TO RECEIVER PLATFORM MTG M456 (11568)	E	EA		4					10	3	
O 00162	5305-021-4389	SCREW, LCAP, HEXAGON HEAD: MOTOR TO RECEIVER PLATFORM MTG	C	EA		4	*	*	*	*	10	3	
X2 O 00163		SCREW, CAP, HEXAGON HEAD: MOTOR TO RECEIVER PLATFORM MTG. CADMIUM OR ZINC PLATED, 3/8-16 THD SIZE, 1 IN. LG E1531-62R 938151)	B	EA		4					10	3	
X2 O 00164	5310-050-2234	WASHER, FLAT: MOTOR TO RECEIVER MTG 3-8FN (79807)	DE	EA		4					10	4	
O 00165	5310-087-7493	WASHER, FLAT: MOTOR TO RECEIVER PLATFORM MTG	BC	EA		4	*	*	*	*	10	4	
X2 O 00166		WASHER, LOCK: MOTOR TO RECEIVER MTG MS35338-8 (96906)	D	EA		4					10	5	
X2 O 00167	5310-582-3341	WASHER, LOCK: MOTOR TO RECEIVER MTG 3-8LW (11568)	E	EA		4					10	5	
O 00168 00169	5310-637-9541	WASHER, LOCK: MOTOR TO RECEIVER PLATFORM MTG  4005 - FRAME SUPPORTS AND HOUSINGS	BC	EA		4	*	*	*	*	10	5	
X2 O 00170	5340-664-0403	BUTTON, PLUG: BRACKET SHAFT END, NICKEL PLATED, 1 IN. 12 PRONG	BC	EA		1					11	3	
X2 O 00171		PLUG, DRAIN E7497-3 (38151)	E	EA		1							
X2 O 00172		PLUG, GREASE E4850-6 (38151)	E	EA		2					11	2	
O 00173	4730-278-3395	PLUG, PIPE: DRAIN	B	EA		2	*	*	*	*	11	4	

(1)	(2)	(3)		(4)	(5)	(6)	(7)				(8)	
SMR CODE INDEX NO	FEDERAL STOCK NUMBER	DESCRIPTION  REFERENCE NO & MFR CODE	USABLE ON CODE	UNIT OF ISSUE	QTY INC IN UNIT PACK	QTY INC IN UNIT	15-DAY MAINTENANCE (A)	ORGANIZATIONAL ALW (B)	(C)	(D)	ILLUS- TRATION (A)	(B)
							1-50	6-20	21-50	51-100	FIG NO	ITEM NO
X2 O 00174	4730-044-4697	PLUG, PIPE: DRAIN E7497-1 (38151)		EA		2					11	4
O 00175	4730-278-3425	PLUG, PIPE: DRAIN	C	EA		2	*	*	*	*	11	4
O 00176	4730-278-3397	PLUG, PIPE: GREASE	BD	EA		2	*	*	*	*	11	2
O 00177	4730-011-8831	PLUG, PIPE: GREASE	C	EA		2	*	*	*	*	11	2
X2 O 00178		SCREW: BASE BOX CONNECTOR MTG E7531-62 (38151)	E	EA		4					11	1
O 00179	5305-021-5450	SCREW, CAP, HEXAGON HEAD: BOX CONNECTOR BASE TO MOTOR	C	EA		4	*	*	*	*	11	1
X2 O 00180		SCREW: FRONT BRACKET E7531-162 (38151)	E	EA		4						
O 00181	5305-012-0583	SCREW, MACHINE: BASE TO MOTOR MTG	D	EA		4	*	*	*	*	11	1
O 00182	5305-012-0583	SCREW, MACHINE: BASE TO MOTOR MTG	B	EA		2	*	*	*	*	11	1
O 00183		4007 - DRIVE COMPONENTS										
X2 O 00184		KEY U8 (11568)	E	EA		1					10	8
O 00185	5315-057-6607	KEY, MACHINE: MOTOR SHAFT	BCD	EA		1	*	*	*	*	10	8
X2 O 00186	3020-837-1270	PULLEY, MOTOR M498 (11568)	BCE	EA		1					10	2
X2 O 00187		PULLEY, MOTOR 5-1-4X7-82VA (11568)	D	EA		1					10	2
O 00188	5305-724-6810	SETSCREW: MOTOR PULLEY	BCE	EA		1	*	*	*	*	10	9
X2 O 00189	5305-013-9412	SETSCREW: PULLEY MTG 3-8-16X3-8SS (11568)	D	EA		1					10	9

(1)	(2)	(3)		(4)	(5)	(6)	(7)				(8)		
SMR CODE INDEX NO	FEDERAL STOCK NUMBER	DESCRIPTION  REFERENCE NO & MFR CODE	USABLE ON CODE	UNIT OF ISSUE	QTY INC IN UNIT PACK	QTY INC IN UNIT	15-DAY MAINTENANCE	ORGANIZATIONAL ALW (A)	(B)	(C)	(D)	ILLUS- TRATION (A) FIG	(B) ITEM NO
00190		4010 - MASTER OR AUXILIARY CONTROL ASSEMBLY											
O 00191	4730-288-9930	ADAPTER, STRAIGHT, PIPE TO TUBE: AIR PRESSURE SWITCH TO AIR RECEIVER LINE	BCD	EA		1	*	*	*	*		12	18
X2 O 00192	4730-221-3902	ELBOW, PIPE TO TUBE: AIR PRESSURE SWITCH TO AIR RECEIVER LINE, BRASS, ONE END MALE, 1/8-27 THD SIZE, OTHER END FEMALE, 1/4IN. TUBE, 7/16-24THD SIZE B 189D1-4X1-8 (30327)		EA		1						12	16
O 00193	4730-277-8276	ELBOW, PIPE TO TUBE: AIR RECEIVER TO AIR PRESSURE SWITCH LINE	BC	EA		1	*	*	*	*		12	16
P O 00194	4310-877-2625	HEATER, OVERLOAD: MAGNETIC STARTER, 416 V F7-1-416V (21810)	B	EA		2	*	*	2	2			
P O 00195	6110-887-4466	HEATER, OVERLOAD: 230 V F14-2-230V (21810)	C	EA		1	*	*	*	*			
P O 00196	6110-532-7789	HEATER, THERMAL RELEASE: 115V F28-0-115V (21810)	C	EA		1	*	*	*	*			
M O 00197		LEAD, ELECTRICAL: CONTROL, PRESSURE SWITCH TO LH OVERLOAD RELAY MANUFACTURE FROM:	B	EA		1						12	7
X2 O 00198	5940-681-9713	TERMINAL, LUG: COPPER, TINNED FINISH, NO. 16 TO NO. 14 AWG, FOR NO. 10 SCREW SIZE.	B		2								
P O 00199	6145-542-6039	WIRE, ELECTRICAL (8 IN. REQUIRED)	B	FT			SEE GRP 9501						
P O 00200	5930-521-8471	REPAIR KIT, PRESSURE SWITCH PK55 (23826)	BC	EA		1	*	2	2	4			
X1 00201		CONTACT SET D9805 (23826)	BC	EA		1							
X1 00202		DIAPHRAGM, AIR D274-1 (23826)	BC	EA		1							
X1 00203		PIN, PUSH ROD D354-1 (23826)	BC	EA		2							
X1 00204		ROD, PUSH D334-1 (23826)	BC	EA		2							

(1)	(2)	(3)		(4)	(5)	(6)	(7)				(8)			
SMR CODE INDEX NO	FEDERAL STOCK NUMBER	DESCRIPTION  REFERENCE NO & MFR CODE	USABLE ON CODE	UNIT OF ISSUE	QTY INC IN UNIT PACK	QTY INC IN UNIT	15-DAY MAINTENANCE	ORGANIZATIONAL ALW	(A)	(B)	(C)	(D)	ILLUS- TRATION (A) FIG	(B) ITEM NO
X1 00205		SCREW, MACHINE: CONTACT MTG, NO. 8-32 THD SIZE, 3/8 IN. LG S108 (23826)	BC	EA		4								
X1 00206		SPRING, CONTACT D358-1 (23826)	BC	EA		2								
O 00207	5305-558-3679	SCREW, MACHINE: MAGNETIC STARTER BOX AND PLATE MTG, CADMIUM OR ZINC PLATED, 1/4-20 THD SIZE, 1 IN. LG	C	EA		2	*	*	*	*				
X2 O 00208	6110-887-4551	STARTER, MAGNETIC 4204AA12J201-26 (21810)	B	EA		1						12		
X2 O 00209		BOX, STARTER A9913Y (21810)	B	EA		1						12	14	
P O 00210	6110-877-2623	COIL, MAGNETIC STARTER ACA151 (21810)	B	EA		1	*	*	*	*		12	20	
P O 00211	6110-877-2626	CONTACT ASSEMBLY, ELECTRICAL: MOVABLE L6248W2 (21810)	B	EA		1	*	*	*		2	12	10	
P O 00212	6110-877-2627	CONTACT, STATIONARY LINE L6289L2 (21810)	B	EA		3	*	*	2	2		12	12	
P O 00213	6110-883-4227	CONTACT, ELECTRICAL, STATIONARY LOAD L6290L2 (21810)	B	EA		3	*	*	2	2		12	11	
X2 O 00214		COVER, STARTER A9917X (21810)	B	EA		1						12	8	
P O 00215	6110-757-1758	HEATER, OVERLOAD: MAGNETIC STARTER, 208 V F12-6-208V (21810)	B	EA		2	*	*	*2			12	6	
M O 00216		LEAD, ELECTRICAL: CONTROL, PRESSURE SWITCH TO MAGNETIC SWITCH 14TW80CSTR (21810) MANUFACTURE FROM:	B	EA		1						12	1	
X2 O 00217	5940-681-9713	TERMINAL, LUG: COPPER, TINNED FINISH, NO. 16-14 AWG, FOR NO. 10 SCREW SIZE	B	EA		2								
P O 00218	6145-542-6039	WIRE, ELECTRICAL (12 IN. REQUIRED)	B	FT						SEE GRP 9501				

(1)	(2)	(3)		(4)	(5)	(6)	(7)		(8)
SMR CODE INDEX NO	FEDERAL STOCK NUMBER	DESCRIPTION  REFERENCE NO & MFR CODE	USABLE ON CODE	UNIT OF ISSUE	QTY INC IN UNIT PACK	QTY INC IN UNIT	15-DAY ORGANIZATIONAL MAINTENANCE ALW (A) (B) (C) (D)		ILLUS- TRATION (A) (B) FIG ITEM NO NO
M O 00219		LEAD, ELECTRICAL: MAGNETIC, SWITCH TO LH OVERLOAD RELAY, AND RH TO LH OVERLOAD RELAY MANUFACTURE FROM:	B	EA		2			12 9
P O 00220	6145-161-5415	WIRE, ELECTRICAL (12 IN. REQUIRED FOR EACH LEAD)	B	FT			SEE GRP 9501		
M O 00221		LEAD, ELECTRICAL: POWER, MAGNETIC SWITCH TO RH AND LH OVERLOAD RELAY 10TW90DEGCSOL (21810) MANUFACTURE FROM:	B	EA		2			12 5
P O 00222	6145-191-2575	WIRE, ELECTRICAL (5 IN. REQUIRED FOR EACH LEAD)	B	FT			SEE GRP 9501		
X2 O 00223	5975-152-1075	LOCKNUT, ELECTRICAL CONDUIT: PRESSURE SWITCH TO MAGNETIC STARTER SWITCH BOX, GALVANIZED, 1/2-14 THD SIZE	B	EA		1			12 19
X2 O 00224		MAGNET, MOVABLE L7030W2 (21810)	B	EA		1			12 3
X2 O 00225		MAGNET, STATIONARY L7030W1 (21810)	B	EA		1			12 27
X2 O 00226		PLATE, IDENTIFICATION: MAGETIC STARTER Y9389X (21810)	B	EA		1	SEE GRP 2210		
X2 O 00227		PLATE, LOCK: MOVABLE MAGNET RETAINER C6247V (21810)	B	EA		1			12 22
X2 O 00228		PLATE, MOTOR MOUNTING C9906W (21810)	B	EA		1			12 15
X2 O 00229	5945-020-6725	RELAY, OVERLOAD: LH L8833L3 (21810)	B	EA		1			12 21
X2 O 00230	5945-020-6726	RELAY, OVERLOAD: RH L8833L4 (21810)	B	EA		1			12 13
O 00231	5305-993-0184	SCREW, MACHINE: MAGNETIC STARTER IDENTIFICATION PLATE MTG	B	EA		1	SEE GRP 2210		
P O 00232	5340-766-0331	SPRING, HELICAL, COMPRESSION: COIL RETAINER 7224874 (21810)	B	EA		1	* * * *		12 4
X2 O 00233	5930-430-4071	SWITCH, PRESSURE: MAGNETIC SWITCH H1 (23826)	B	EA		1			12 2

(1)	(2)	(3)		(4)	(5)	(6)	(7)				(8)	
SMR CODE INDEX NO	FEDERAL STOCK NUMBER	DESCRIPTION  REFERENCE NO & MFR CODE	USABLE ON CODE	UNIT OF ISSUE	QTY INC IN UNIT PACK	QTY INC IN UNIT	15-DAY ORGANIZATIONAL MAINTENANCE ALW				ILLUS- TRATION (A) FIG NO	(B) (B) ITEM NO
							(A)	(B)	(C)	(D)		
							1-50	6-20	21-50	51-100		
X2 O 00234	6110-887-4551	STARTER, MAGNETIC 4204AA12J201-26 (21810)	C	EA		1					12	
X2 O 00235		BOX, STARTER A9913Y (21810)	C	EA		1					12	14
P O 00236	5950-532-7843	COIL, RELAY ACA126 (21810)	C	EA		1	*	*	*	*	12	20
P O 00237	6110-877-2626	CONTACT ASSEMBLY, ELECTRICAL: MOVABLE L6248W2 (21810)	C	EA		2	*	*	*	2	12	10
P O 00238	6110-877-2627	CONTACT, ELECTRICAL: STATIONARY LINE L6289L2 (21810)	C	EA		2	*	*	*	2	12	12
P O 00239	6110-883-4227	CONTACT, ELECTRICAL: STATIONARY LOAD L6290L2 (21810)	C	EA		2	*	*	*	2	12	11
X2 O 00240		COVER, STARTER A9917X (21810)	C	EA		1					12	8
X2 O 00241		DIAGRAM, WIRING WD9920W (21810)	C	EA		1	SEE GRP 2210					
M O 00242		LEAD, ELECTRICAL: CONTACTOR TO OVERLOAD HEATER MANUFACTURE FROM:	C	EA		1						
P O 00243	6145-191-2575	WIRE, ELECTRICAL (5 IN. REQUIRED)	C	FT			SEE GRP 9501					
M O 00244		LEAD, ELECTRICAL: MAGNETIC STARTER TO CONTACTOR TERMAMAL MANUFACTURE FROM:	C	EA		1						
X2 O 00245	5940-050-6207	TERMINAL, LUG: COPPER, TINNED FINISH, NO. 16-14 AWG, FOR NO. 8 SCREW SIZE	C	EA		2						
P O 00246	6145-160-5137	WIRE, ELECTRICAL (8 IN. REQUIRED)	C	FT			SEE GRP 9501					
M O 00247		LEAD, ELECTRICAL: OFF-ON TOGGLE SWITCH TO MAGNETIC STARTER MANUFACTURE FROM:	C	EA		1						
X2 O 00248	5940-050-6207	TERMINAL, LUG: COPPER, TINNED FINISH, NO. 16-14 AWG, FOR NO. 8 SCREW SIZE	C	EA		2						

(1)	(2)	(3)		(4)	(5)	(6)	(7)					(8)	
SMR CODE INDEX NO	FEDERAL STOCK NUMBER	DESCRIPTION  REFERENCE NO & MFR CODE	USABLE ON CODE	UNIT OF ISSUE	QTY INC IN PACK	QTY INC IN UNIT	15-DAY ORGANIZATIONAL MAINTENANCE ALW (A) (B) (C) (D)					ILLUS- TRATION (A) (B) FIG ITEM NO NO	
P O 00249 M O 00250	6145-160-5137	WIRE, ELECTRICAL (12 IN. REQUIRED)	C	FT			SEE	GRP	9501				
		LEAD, ELECTRICAL: PRESSURE SWITCH TO CONTACTOR TERMINAL MANUFACTURE FROM:	C	EA	1								
X2 O 00251	5940-050-6207	TERMINAL, LUG: COPPER, TINNED FINISH, NO. 16-14 AWG, FOR NO. 8 SCREW SIZE	C	EA	1								
X2 O 00252	5940-681-9713	TERMINAL, LUG: COPPER, TINNED FINISH, NO. 16-14 AWG, FOR NO. 10 SCREW SIZE	C	EA	1								
P O 00253 M O 00254	6145-160-5137	WIRE, ELECTRICAL (16 IN. REQUIRED)	C	FT			SEE	GRP	9501				
		LEAD, ELECTRICAL: PRESSURE SWITCH TO OFF-ON TOGGLE SWITCH MANUFACTURE FROM:	C	EA	1								
P O 00255 X2 O 00256 X2 O 00257	6145-161-5415	WIRE, ELECTRICAL (4 IN. REQUIRED)	C	FT			SEE	GRP	9501				
		MAGNET, MOVABLE L7030W2 (21810)	C	EA	1						12	3	
		MAGNET, STATIONARY L7030W1 (21810)	C	EA	1						12	27	
X2 O 00258		PLATE, IDENTIFICATION: MAGNETIC STARTER Y9389X (21810)	C	EA	1		SEE	GRP	22101				
X2 O 00259		PLATE, LOCK: MOVABLE MAGNET RETAINER C6247V (21810)	C	EA	1						12	22	
X2 O 00260		PLATE: STARTER BOX MTG C9906W (21810)	C	EA	1						12	15	
X2 O 00261		RELAY, OVERLOAD: 1H L8833L3 (21810)	C	EA	1						12	21	
O 00262 O 00263 O 00264	5305-013-2764	SCREW, MACHINE: MAGNETIC STARTER BOX COVER MTG	C	EA	1		*	*	*	*			
	5305-013-2892	SCREW, MACHINE: MAGNETIC STARTER BOX TO MTG PLATE	C	EA	4		*	*	*	*	12	25	
	5305-993-0184	SCREW, MACHINE: MAGNETIC STARTER IDENTIFICATION PLATE MTG	C	EA	1		SEE	GRP	2210				

(1)	(2)	(3)		(4)	(5)	(6)	(7)				(8)	
SMR CODE INDEX NO	FEDERAL STOCK NUMBER	DESCRIPTION  REFERENCE NO & MFR CODE	USABLE ON CODE	UNIT OF ISSUE	QTY INC IN UNIT PACK	INC IN UNIT	15-DAY MAINTENANCE (A)	ORGANIZATIONAL ALW (B)	(C)	(D)	FIG NO	(B) ITEM NO
O 00265	5305-012-2159	SCREW, MACHINE: MAGNETIC STARTER MTG	C	EA	3		*	*	*	*		
P O 00266	5340-766-0331	SPRING, HELICAL, COMPRESSION: COIL RETAINER 7224874 (21810)	C	EA	1		*	*	*	*	12	4
O 00267	5310-043-2226	WASHER, LOCK: MAGNETIC STARTER BOX TO MTG PLATE	C	EA	4		*	*	*	*	12	26
X2 O 00268	6110-887-4551	STARTER, MAGNETIC 4204AA12J201-26 (21810)	D	EA	1						12	
X2 O 00269		ADAPTER, STRAIGHT, PIPE TO TUBE: AIR PRESSURE SWITCH TO AIR RECEVIER LINE 1-4X1-8SCB (87005)	D	EA	1						12	18
X2 O 00270		BOX, STARTER A9913Y (21810)	D	EA	1						12	14
P O 00271	5950-532-7843	COIL, OPERATING ACA126 (21810)	D	EA	1		*	*	*	*	12	20
P O 00272	6110-887-2626	CONTACT ASSEMBLY, ELECTRICAL: MOVABLE L6248W2 (21810)	D	EA	2		*	*	*	*	12	10
P O 00273	6110-887-2627	CONTACT, ELECTRICAL: STATIONARY LINE L6289L2 (21810)	D	EA	2		*	*	*	*	12	12
P O 00274	6110-883-4227	CONTACT, ELECTRICAL: STATIONARY LOAD L9290L2 (21810)	D	EA	2		*	*	*	2	12	11
X2 O 00275		COVER, STARTER A9917X (21810)	D	EA	1							
X2 O 00276		DIAGRAM, WIRING WD9920W (21810)	D	EA	1		SEE	GRP	2210		12	8
X2 O 00277	4730-277-8266	ELBOW, PIPE TO TUBE: AIR PRESSURE SWITCH TO AIR RECEIVER LINE 1-4X1-490DEGCE (87005)	D	EA	1						12	16
P O 00278	6610-532-7789	HEATER, OVERLOAD: MAGNETIC STARTER F28 (21810)	D	EA	1		*	*	*	2	12	6
P O 00279	6110-887-4466	HEATER, OVERLOAD: MAGNETIC STARTER F14-2 (21810)	D	EA	1		*	*	*	2	12	6



(1)	(2)	(3)		(4)	(5)	(6)	(7)		(8)
SMR CODE INDEX NO	FEDERAL STOCK NUMBER	DESCRIPTION  REFERENCE NO & MFR CODE	USABLE ON CODE	UNIT OF ISSUE	QTY INC IN UNIT PACK	QTY INC IN UNIT	15-DAY ORGANIZATIONAL MAINTENANCE ALW (A) (B) (C) (D)		ILLUS- TRATION (A) (B) FIG ITEM NO NO
X2 O 00280		LEAD 14TW4 (11568)	D	EA		1			12 1
X2 O 00281	6145-160-5137	LEAD, CONTROL 14TW80DEGC (21810)	D	EA		2			12 9
X2 O 00282	6145-295-1309	LEAD, POWER 10TW90DEGCSOL (21810)	D	EA		1			12 5
X2 O 00283		MAGNET, MOVABLE L7030W2 (21810)	D	EA		1			12 3
X2 O 00284		MAGNET, STATIONARY L7030W1 (21810)	D	EA		1			12 27
X2 O 00285		NUT, LOCK: OFF-ON SWITCH MTG 1-2CLN (74545)	D	EA		2			
X2 O 00286		PLATE, IDENTIFICATION: MAGNETIC STARTER Y9389X (21810)	D	EA		1	SEE GRP 2210		
X2 O 00287		PLATE, LOCK: MOVABLE MAGNETIC RETAINER C6247W (21810)	D	EA		1			12 22
X2 O 00288		PLATE, MOTOR MOUTING C9906W (21810)	D	EA		1			12 15
X2 O 00289	5945-020-6725	RELAY, OVERLOAD: 1H L8833L3 (21810)	D	EA		1			12 21
X2 O 00290	5305-013-2740	SCREW, MACHINE: MAGNETIC STARTER IDENTIFICATION PLATE MTG	D	EA		1	SEE GRP 2210		
P O 00291	2920-834-8474	SET, RENEWAL AR3 (21810)	D	EA		1	* * * 2		
X1 00292	6110-887-2627	CONTACT L6289L2 (21810)	D	EA		4			
X1 00293	6110-883-4227	CONTACT L6290L2 (21810)	D	EA		4			
X1 00294	6110-887-2626	FINGER ASSEMBLY L6248W2 (21810)	D	EA		4			

(1)	(2)	(3)		(4)	(5)	(6)	(7)				(8)		
SMR CODE INDEX NO	FEDERAL STOCK NUMBER	DESCRIPTION  REFERENCE NO & MFR CODE	USABLE ON CODE	UNIT OF ISSUE	QTY INC IN UNIT PACK	QTY INC IN UNIT	15-DAY MAINTENANCE	ORGANIZATIONAL ALW (A)	(B)	(C)	(D)	ILLUS- TRATION (A) FIG NO	(B) ITEM NO
X2 O 00295	5340-766-0331	SPRING, COIL RETAINER 7224874 (21810)	D	EA		1					12	4	
X2 O 00296	5930-241-8921	SWITCH, OFF-ON 2SA25-73 (73559)	D	EA		1							
P O 00297	5930-430-4071	SWITCH, PRESSURE: MAGNETIC SWITCH HL (23826)	D	EA		1	*	*	*	2	12	2	
X2 O 00298		TUBE, PRESSURE: ALUMINUM 1-4X8-1-2AT (11568)	D	EA		1					12	17	
X2 O 00299		WASHER: OFF-ON SWITCH MTG, 3/4 X 1/2 IN. 3-4X1-2CRW (74545)	D	EA		2							
X2 O 00300	6110-887-4744	STARTER, MAGNETIC 4204AA13J201-51 (21810)	E	EA		1					12		
X2 O 00301		ADAPTER, STRAIGHT, PIPE TO TUBE M408 (11568)	E	EA		1					12	18	
X2 O 00302		BOX, STARTER A9913Y (21810)	E	EA		1					12	14	
P O 00303	6110-887-2623	COIL, MAGNETIC STARTER ACA151 (21810)	E	EA		1	*	*	*	*	12	20	
P O 00304	6110-887-2626	CONTACT ASSEMBLY, ELECTRICAL: MOVALBE L6248W2 (21810)	E	EA		3	*	*	*	2	12	10	
P O 00305	6110-887-2627	CONTACT, ELECTRICAL: STATIONARY LINE L6289L2 (21810)	E	EA		3	*	*	2	2	12	12	
P O 00306	6110-883-4227	CONTACT, ELECTRICAL: STATIONARY LOAD L6290L2 (21810)	E	EA		3	*	*	2	2	12	11	
X2 O 00307		COVER, STARTER Z9917X (21810)	E	EA		1					12	8	
X2 O 00308		DIAGRAM, WIRING WD9920W (21810)	E	EA		1	SEE	GRP	2210				

(1)	(2)	(3)		(4)	(5)	(6)	(7)				(8)	
SMR CODE INDEX NO	FEDERAL STOCK NUMBER	DESCRIPTION  REFERENCE NO & MFR CODE	USABLE ON CODE	UNIT OF ISSUE	QTY INC IN UNIT PACK	QTY INC IN UNIT	15-DAY MAINTENANCE 1-50	ORGANIZATIONAL ALW (B)	(C)	(D)	ILLUS- TRATION (A) FIG NO	(B) ITEM NO
X2 O 00309		ELBOW: AIR RECEIVER LINE M499 (11568)	E	EA		1					12	16
P O 00310	4310-877-2625	HEATER, OVERLOAD: MAGNETIC STARTER FAO (21810)	E	EA		2	*	*	*	2	12	6
P O 00311	4310-877-2624	HEATER, OVERLOAD: MAGNETIC STARTER, 416 V F4-0 (21810)	E	EA		2	*	*	*	2	12	6
P O 00312	6145-542-6039	LEAD, CONTROL 10TW80CSTR (21810)	E	EA		1	*	*	*	*	12	9
P O 00313	6145-295-1309	LEAD, POWER 10TW90CSOL (21810)	E	EA		1	*	*	*	*	12	5
X2 O 00314		MAGNET, STATIONARY L7030W1 (21810)	E	EA		1					12	27
X2 O 00315		NUT: TUBE M27 (11568)	E	EA		2						
X2 O 00316		PLATE, IDENTIFICATION: MAGNETIC STARTER Y9389X (21810)	E	EA		1	SEE	GRP	2210			
X2 O 00317		PLATE, LOCK: MAVABLE MAGNETIC RETAINER C6247V (21810)	E	EA		1					12	22
X2 O 00318		PLATE, MOTOR MOUNTING C9906W (21810)	E	EA		1					12	15
X2 O 00319		RELAY, OVERLOAD: 1H L8833L3 (21810)	E	EA		1					12	21
X2 O 00320		RELAY, OVERLOAD: 1H L8833L4 (21810)	E	EA		1					12	13
X2 O 00321	5305-013-2740	SCREW, MACHINE: MAGNETIC STARTER IDENTIFICATION PLATE MTG	E	EA		11	SEE	GRP	2210			
X2 O 00322	5340-766-0331	SPRING: COIL RETAINER	E	EA		1					12	4
X2 O 00323		SWITCH, OFF-ON 2DA25-73 (73559)	E	EA		1						

(1)	(2)	(3)		(4)	(5)	(6)	(7)				(8)	
SMR CODE INDEX NO	FEDERAL STOCK NUMBER	DESCRIPTION  REFERENCE NO & MFR CODE	USABLE ON CODE	UNIT OF ISSUE	QTY INC IN UNIT PACK	QTY INC IN UNIT	15-DAY MAINTENANCE 1-50	ORGANIZATIONAL ALW (B) 6-20	(C) 21-50	(D) 51-100	(A) FIG NO	(B) ITEM NO
P O 00324	5930-430-4071	SWITCH, PRESSURE: MAGNETIC SWITCH H1 (23826)	E	EA		1	*	*	*	2	12	2
X2 O 00325		TUBE 1-4X8 (11568)	E	EA		1					12	17
X2 O 00326	5930-430-4071	SWITCH, PRESSURE: MAGNETIC STARTER H1 (23826) (INCLUDES COMPONENTS OF REPAIR KIT, STOCK NO. 5930-521-8471)	BC	EA		1					12	2
M O 00327		TUBE, PRESSURE: AIR PRESSURE SWITCH TO AIR RECEIVER MANUFACTURE FROM:	BC	EA		1					12	17
O 00328	4730-142-1593	INVERTED NUT, TUBE COUPLING: AIR PRESSURE SWITCH TO AIR PRESSURE LINE	BC	EA		2	*	*	*	*		
P O 00329 00330	4710-278-6398	TUBE, ALUMINUM (10 IN. REQUIRED)  4012 - SWITCHES	BC	FT			SEE	GRP	9501			
X2 O 00331		SWITCH, TOGGLE: OFF-ON ZDA26-73 (73559)	C	EA		1						
00332		GROUP 47 - GAGES (NON-ELECTRICAL), WEIGHING AND MEASURING DEVICES										
00333		4702 - GAGES, MOUNTINGS, LINES AND FITTINGS										
X2 O 00334		BRACKET: AIR PRESSURE GAGE MTG M641 (11568)	AF	EA		1					6	13
O 00335	4730-246-9215	ELBOW, PIPE: AIR PRESSURE GAGE HOSE ASSEMBLY TO RECEIVER	AF	EA		1	*	*	*	*	6	27
P O 00336	6685-514-3709	GAGE,PRESSURE, DIAL INDICATING:AIR PRESSURE, RECEIVER,0-300 LB,1/4-18 THD SIZE N060 (11568)	B	EA		1	*	*	*	*	14	4
P O 00337	6685-264-3961	GAGE, PRESSURE, DIAL IDICATING: AIR RECEIVER M519C (11568)	AF	EA		1	*	*	*	*	6	11
P O 00338	6685-264-3961	GAGE, PRESSURE, DIAL INDICATING: AIR RECEIVER M519 (11568)	E	EA		1	*	*	*	*	14	4
P O 00339	6685-264-3961	GAGE, PRESSURE, DIAL INDICATING: AIR RECEIVER M519C (80208)	CD	EA		1					14	4

(1)	(2)	(3)		(4)	(5)	(6)	(7)				(8)		
SMR CODE INDEX NO	FEDERAL STOCK NUMBER	DESCRIPTION  REFERENCE NO & MFR CODE	USABLE ON CODE	UNIT OF ISSUE	QTY INC IN UNIT PACK	QTY INC IN UNIT	15-DAY MAINTENANCE (A)	ORGANIZATIONAL ALW (B)	(C)	(D)	51-100	(A) FIG NO	(B) ITEM NO
P O 00340	4310-327-6438	HOSE ASSEMBLY, GAGE: RECEIVER Z260 (11568)	AF	EA	1	*	*	*	2		6	14	
O 00341 00342 00343	5310-269-5914	WASHER, FLAT: HOSE ASSEMBLY TO MTG BRACKET  GROUP 50 - PNEUMATIC EQUIPMENT  5000 - AIR COMPRESSOR ASSEMBLY	AF	EA	1	*	*	*	*		6	12	
X2 OR 00344	4310-987-2742	COMPRESSOR, AIR: ELECTRIC MOTOR DRIVEN NR150 (11568)	BC	EA	1						1		
X2 OR 00345		COMPRESSOR, AIR: ELECTRIC MOTOR DRIVEN NR150A (11568)	DE	EA	1						1		
X2 OR 00346	4310-902-2447	COMPRESSOR, AIR: GASOLINE ENGINE DRIVEN NR150L (11568)	A	EA	1						1		
X2 OR 00347		COMPRESSOR, AIR: GASOLINE ENGINE DRIVEN NR150AL (11568)	F	EA	1						1		
P O 00348	4310-882-5057	GASKET SET: AIR COMPRESSOR Z253 (11568)	ABC	EA	1	*	2	2	4				
X1 00349	4310-657-7413	GASKET: CYLINDER FLANGE SE14-29 (11568)	ABC	EA	1	SEE	GRP	5001					
X1 00350	4310-585-4283	GASKET: GOVERNOR HOUSING SE14-89 (11568)	ABC	EA	1	SEE	GRP	5009					
X1 00351	4310-585-9951	GASKET: HANDHOLE PLATE, CRANKCASE SE14-31 (11568)	ABC	EA	1	SEE	GRP	5001					
X1 00352	5330-584-9000	GASKET: OIL FILLER CAP SE30-18 (11568)	ABC	EA	1	SEE	GRP	5006					
X1 00353	4310-654-3588	GASKET: OIL FILLER HANDHOLE PLATE, CRANKCASE SE14-33 (11568)	ABC	EA	1	SEE	GRP	5001					
X1 00354	4310-633-6114	GASKET: SHIM, GOVERNOR HOUSING (SET OF 3) SE14-30A (11568)	ABC	EA	1	SEE	GRP	5009					

(1)	(2)	(3)		(4)	(5)	(6)	(7)				(8)		
SMR CODE INDEX NO	FEDERAL STOCK NUMBER	DESCRIPTION  REFERENCE NO & MFR CODE	USABLE ON CODE	UNIT OF ISSUE	QTY INC IN UNIT PACK	QTY INC IN UNIT	15-DAY MAINTENANCE ALW	ORGANIZATIONAL (A)	(B)	(C)	(D)	ILLUS- TRATION (A)	(B) ITEM NO
P O 00355	4310-066-4206	GASKET SET: AIR COMPRESSOR Z253A (11568)	DEF	EA	1	*	2	2	4				
X1 00356	4310-657-7413	GASKET: CYLINDER FLANGE SE14-29 (11568)	DEF	EA	1	SEE	GRP	5001					
X1 00357		GASKET: GOVERNOR HOUSING SE14-89 (11568)	DEF	EA	1	SEE	GRP	5009					
X1 00358	5310-058-3651	GASKET: GOVERNOR UNLOADER SPRING SE5-88 (11568)	DEF	EA	1	SEE	GRP	5009					
X1 00359	4310-585-7546	GASKET: HANGHOLE PLATE NR31 (11568)	DEF	EA	2	SEE	GRP	5001					
X1 00360		GASKET: SHIM, GOVERNOR SE14-30A (11568)	DEF	EA	1	SEE	GRP	5009					
X1 00361		GASKET (1) H122 (11568)	DEF	EA	0								
P O 00362	4310-887-2622	KIT, VALVE ASSEMBLY Z124 (11568)	E	EA	1	*	*	2	2				
X1 00363	3110-606-8365	BALL, BEARING: RELIEF VALVE SE5-95 (11568)	E	EA	1	SEE	GRP	5009					
X1 00364	4310-625-6749	BODY, RELEASE VALVE SE30-101 (11568)	E	EA	1	SEE	GRP	5009					
X1 00365		CAP, RELIEF VALVE SE5-85 (11568)	E	EA	1	SEE	GRP	5009					
X1 00366	5330-298-5554	GASKET: RELEASE VALVE BODY M122 (11568)	E	EA	1	SEE	GRP	5009					
X1 00367	4310-654-3589	PLUNGER, RELIEF VALVE SE5-86A (11568)	E	EA	1	SEE	GRP	5009					
X1 00368	4310-625-6748	SLEEVE, PLUNGER: RELIEF VALVE SE5-97 (11568)	E	EA	1	SEE	GRP	5009					
X1 00369	4310-616-4373	SPRING, RELIEF VALVE SE5-91 (11568)	E	EA	1	SEE	GRP	5009					

(1)	(2)	(3)		(4)	(5)	(6)	(7)				(8)			
SMR CODE INDEX NO	FEDERAL STOCK NUMBER	DESCRIPTION  REFERENCE NO & MFR CODE	USABLE ON CODE	UNIT OF ISSUE	QTY INC IN UNIT PACK	QTY INC IN UNIT	15-DAY MAINTENANCE ALW	ORGANIZATIONAL ALW	(A)	(B)	(C)	(D)	ILLUS- TRATION (A) FIG NO	(B) ITEM NO
O 00370 X2 O 00371	5310-732-0558 5310-010-2635	NUT, PLAIN, HEXAGON: AIR COMPRESSOR MTG NUT, PLAIN, HEXAGON: COMPRESSOR MTG 3-8N (87764)	BCE D	EA EA	4 4	*	*	*	*			1 1	12 12	
O 00372 O 00373 X2 O 00374	5310-050-3275 5305-269-3213 5305-065-6800	NUT, PLAIN, HEXAGON: COMPRESSOR MTG SCREW, CAP, HEXAGON HEAD: AIR COMPRESSOR MTG SCREW, CAP, HEXAGON HEAD: COMPRESSOR MTG 3-8-16X1-1-4CS (87764)	AF BC D	EA EA EA	4 4 4	*	*	*	*			1 1 1	12 11 11	
O 00375 X2 O 00376	5305-021-5466	SCREW, CAP, HEXAGON HEAD: COMPRESSOR MTG SCREW, CAP, HEXAGON HEAD: COMPRESSOR MTG, CADMIUM OR ZINC PLATED, 3/8-16 THD SIZE, 2 IN. LG	F A	EA EA	4 4	*	*	*	*			1 1	11 11	
O 00377 O 00378 X2 O 00379	5310-087-7493 5310-637-9541	WASHER, FLAT: AIR COMPRESSOR MTG WASHER, LOCK: AIR COMPRESSOR MTG WASHER, LOCK: COMPRESSOR MTG MS3533-8 (96906)	BC BC D	EA EA EA	4 4 4	*	*	*	*			1 1 1	14 13 13	
X2 O 00380  00381	5310-582-3341	WASHER, LOCK: COMPRESSOR MTG 3-8LW (11568) 5001 - CRANKCASE, BLOCK, CYLINDER HEAD	E	EA	8							1	13	
O 00382 O 00383 O 00384 O 00385 X2 O 00386	5306-225-8497 5306-017-9818 5306-225-8499 5306-225-8499	BOLT, MACHINE: HANDHOLE PLATE MTG BOLT, MACHINE: HANDHOLE PLATE MTG BOLT, MACHINE: HANDHOLE PLATE MTG BOLT, MACHINE: HANDHOLE PLATE MTG	A F BC D	EA EA EA EA	10 12 10 12	*	*	*	*			1 1 1 1	17 17 17 17	
X2 O 00386  O 00387 X2 O 00388	5306-225-8499 4730-228-1621	BOLT, MACHINE: HANDHOLE PLATE MTG M567 (11568) CAP, PIPE: AIR COMPRESSOR OIL DRAIN CAP, PIPE: COMPRESSOR OIL DRAIN M461 (14959)	E  E	EA  EA	12  1 1					*	*	*	*	1 1 1 10 10

(1)	(2)	(3)		(4)	(5)	(6)	(7)				(8)			
SMR CODE INDEX NO	FEDERAL STOCK NUMBER	DESCRIPTION  REFERENCE NO & MFR CODE	USABLE ON CODE	UNIT OF ISSUE	QTY INC IN UNIT PACK	QTY INC IN UNIT	15-DAY MAINTENANCE	ORGANIZATIONAL ALW	(A)	(B)	(C)	(D)	ILLUS- TRATION (A) FIG NO	(B) ITEM NO
X2 O 00389		CAP, PIPE: OIL DRAIN, 3/8 IN. PF33 (14959)	F	EA		1						1	10	
X2 O 00390	4730-288-1619	CAP, PIPE: OIL DRAIN, 3/8 IN.	D	EA		1						1	10	
X1 00391	4310-657-7413	GASKET: CYLINDER FLANGE SE14-29 (11568) (COMPONENT OF GASKET SET, STOCK NO. 4310-882-5057 AND GASKET SET, STOCK NO. 4310-066-4206, SEE GROUP 5000)		EA		1						1	4	
X1 00392	4310-585-7546	GASKET: HANDHOLE PLATE NR31 (11568) (COMPONENT OF GASKET SET, STOCK NO. 4310-066-4206, SEE GROUP 5000)	DEF	EA		2						1	5	
X1 00393	4310-585-9951	GASKET: HANDHOLE PLATE, CRANKCASE SE14-31 (11568) (COMPONENT OF GASKET SET, STOCK NO. 4310-066-4206, SEE GROUP 5000)	ABC	EA		1						1	5	
X1 00394	4310-654-3588	GASKET: OIL FILLER HANDHOLE PLATE, CRANKCASE SE14-33 (11568) (COMPONENT OF GASKET SET, STOCK NO. 4310-066-4206, SEE GROUP 5000)	ABC	EA		1						1	15	
O 00395	4730-277-9997	NIPPLE, PIPE: AIR COMPRESSOR, OIL DRIAN		EA		1	*	*	*	*		1	9	
X2 O 00396		NIPPLE, PIPE: OIL DRIAN M460 (11568)	E	EA		1						1	9	
X2 O 00397		NIPPLE, PIPE: OIL DRIAN, 3/8 IN. X 5 IN. LG PF13J (14959)	DF	EA		1						1	9	
X2 O 00398		PLATE, HANDHOLE: CRANKCASE SE14-15L (11568)	A	EA		1						1	6	
X2 O 00399		PLATE, HANDHOLE: CRANKCASE NR15 (11568)	DEF	EA		2						1	6	
X2 O 00400		PLATE, HANDHOLE: CRANKCASE, CAST IRON SE14-15 (11568)	BC	EA		1						1	6	
X2 O 00401		PLATE, HANDHOLE: CRANKCASE, W/OIL FILLER SE14-15B (11568)	C	EA		1						1	16	
X2 O 00402		PLATE, HANDHOLE, OIL FILLER: CRANKCASE SE14-15BL (11568)	A	EA		1						1	16	



(1)	(2)	(3)		(4)	(5)	(6)	(7)				(8)	
SMR CODE INDEX NO	FEDERAL STOCK NUMBER	DESCRIPTION  REFERENCE NO & MFR CODE	USABLE ON CODE	UNIT OF ISSUE	QTY INC IN UNIT PACK	QTY INC IN UNIT	15-DAY MAINTENANCE (A)	ORGANIZATIONAL ALW (B)	(C)	(D)	ILLUS- TRATION (A) FIG NO	(B) ITEM NO
X2 O 00403		PLATE, HANDHOLE, OIL FILLER: CRANKCASE, CAST IRON SE14-15B (11568)	B	EA		1					1	16
O 00404	5307-850-0308	STUD, PLAIN: MANIFOLD MTG		EA	8	*	*	*	*		4	11
X2 O 00405	5307-732-4920	STUD, PLAIN: MANIFOLD MTG SE572 (11568)	E	EA	8						4	11
00406		5002 - CRANKSHAFT										
X2 O 00407		KEY: FLYWHEEL H18 (11568)	DEF	EA	1						1	3
X2 O 00408		KEY, MACHINE: FLYWHEEL, 2 IN. LG, 1/4 IN. SQ. SE5-8 (11568)	ABC	EA	1						1	3
00409		5005 - VALVES, CAMSHAFT AND TIMING MECHANISM										
P O 00410	5330-882-5056	GASKET SET: VALVE Z100G (11568)	D	EA	1	*	2	2	4			
X1 00411	5330-239-1792	GASKET, VALVE RE10-66 (11568)	D	EA	4						2	8
X1 00412	5330-599-5888	GASKET, VALVE SE5-28 (11568)	D	EA	4						2	1
P O 00413	5330-584-9010	GASKET, VALVE 2165 (79150)		EA	4	*	2	2	4		2	8
P O 00414	5330-599-5888	GASKET, VALVE 2185 (79150)		EA	4	*	2	2	4		2	1
P O 00415	4310-654-3590	VALVE ASSEMBLY, AIR: LOW PRESSURE INTAKE Z114 (11568) (INCLUDES COMPONENTS OF GASKET SET, STOCK NO. 5330-882-5056) (SAME AS VALVE ASSEMBLY, STOCK NO. 4310-631-3397, EXCEPT WHEN INDIVIDUAL COMPONENTS ARE ANNOTATED)		EA	1	*	*	*	*		2	13
P O 00416	4310-631-3396	VALVE ASSEMBLY, DISCHARGE: HIGH AND LOW PRESSURE Z115 (11568) (INCLUDES COMPONENTS OF GASKET SET, STOCK NO. 5330-584-9000)		EA	2	*	*	*	*		2	9

(1)	(2)	(3)	(4)	(5)	(6)	(7)				(8)			
SMR CODE INDEX NO	FEDERAL STOCK NUMBER	DESCRIPTION  REFERENCE NO & MFR CODE	USABLE ON CODE	QTY INC	QTY INC	15-DAY MAINTENANCE	ORGANIZATIONAL ALW	(A)	(B)	(C)	(D)	ILLUS- TRATION (A) FIG	(B) ITEM NO
				UNIT OF ISSUE	UNIT PACK	UNIT	1-50	6-20	21-50	51-100			
X1 00417	4310-625-6753	CAGE, EXHAUST VALVE: HIGH AND LOW PRESSURE RE7-53A (11568)		EA		2						2	4
X1 00418	5310-625-6755	DISK, HIGH PRESSURE INTAKE AND EXHAUST VALVE RE10-62 (11568)		EA		2						2	6
O 00419	5305-013-2900	SCREW, MACHINE: VALVE CAGE		EA		2	*	*	*	*		2	2
X1 00420	4310-625-6752	SEAT, HIGH PRESSURE EXHAUST VALVE RE7-57A (11568)		EA		2						2	7
X1 00421	4310-616-4372	SPRING, HELICAL, COMPRESSION RE7-60 (11568)		EA		2						2	5
O 00422	5310-596-7691	WASHER, LOCK: VALVE CAGE		EA		2	*	*	*	*		2	3
P O 00423	4310-631-3397	VALVE ASSEMBLY, INLET: HIGH PRESSURE Z113 (11568) (INCLUDES COMPONENTS OF GASKET SET, STOCK NO. 5330-584-9000)		EA		1	*	*	*	*		2	13
X1 00424		CAGE, INTAKE VALVE: HIGH AND LOW PRESSURE RE7-52A (11568)		EA		2						2	12
X1 00425	5310-625-6755	DISK, HIGH PRESSURE INTAKE AND EXAHUST VALVE RE10-62 (11568)		EA		2						2	6
X2 O 00426		SCREW, MACHINE: VALVE CAGE, CADMIUM OR ZINC PLATED, NO. 10-32 THD SIZE, 3/8 IN. LG RE7-81 (11568)		EA		2						2	2
X1 00427	4310-625-6754	SEAT, HIGH-PRESSURE INTAKE VALVE RE7-56A (11568)		EA		2						2	10
X1 00428	4310-616-4372	SPRING, HELICAL, COMPRESSION RE7-60 (11568) (USED WITH VALVE ASSEMBLY, STOCK NO. 4310-631-3397)		EA		1						2	11
X1 00429	4310-329-8426	SPRING, INTAKE VALVE RE7-58 (11568) (USED WITH VALVE ASSEMBLY, STOCK NO. 4310-654-3590 ONLY)		EA		1						2	11
O 00430	5310-596-7691	WASHER, LOCK: VALVE CAGE SCREW		EA		2	*	*	*	*		2	3

(1)	(2)	(3)		(4)	(5)	(6)	(7)				(8)	
SMR CODE INDEX NO	FEDERAL STOCK NUMBER	DESCRIPTION  REFERENCE NO & MFR CODE	USABLE ON CODE	UNIT OF ISSUE	QTY INC IN UNIT PACK	QTY INC IN UNIT	15-DAY MAINTENANCE (A)	ORGANIZATIONAL ALW (B)	(C)	(D)	ILLUS- TRATION (A) FIG	(B) ITEM NO
00431		5006 - LUBRICATION SYSTEM										
X2 O 00432		ADAPTER, STRAIGHT, PIPE TO TUBE: BREATHER TUBE M408 (11568)	E	EA	2					4	12	
O 00433 X2 O 00434	4730-288-9930	ADAPTER, STRAIGHT, PIPE TO TUBE: BREATHER TUBE  ADAPTER, STRAIGHT, PIPE TO TUBE: BREATHER TUBE M508 (11568)		EA	2	*	*	*	*	4	12	
X2 C 00435	4310-899-1275	CAP, OIL FILLER: CRANKCASE SE30-17 (11568)		EA	1					1	19	
X2 O 00436		CAP, OIL FILLER: CRANKCASE M459 (11568)	DEF	EA	1					1	19	
X1 00437	5330-584-9000	GASKET: OIL FILLER CAP SE30-18 (11568) (COMPONENT OF GASKET SET, STOCK NO. 4310-882-5057, SEE GROUP 5000)	ABC	EA	1					1	18	
X2 O 00438		NUT M27 (11568)	E	EA	2							
M O 00439	4310-977-2549	TUBE ASSEMBLY, BREATHER UB254 (11568) MANUFACTURE FROM:		EA	1					4	13	
O 00440 P O 00441 X2 O 00442	4730-142-1593 4710-278-6398	INVERTED NUT, TUBE COUPLING: BREATHER TUBE  TUBE, ALUMINUM (11 9/16 IN. REQUIRED)  TUBE ASSEMBLY, BREATHER VB254 (11568)		EA FT EA	2	*	*	*	*			
00443		5007 - COMPRESSOR DRIVE								4	13	
P O 00444	3030-243-7256	BELT, V, MATCHED SET: ENGINE TO COMPRESSOR 4L540-2 (25472)	AF	SET	1	*	2	2	4	5	11	
P O 00445	3030-251-3941	BELT, V, MATCHED SET: MOTOR TO COMPRESSOR 4L580-2 (25472)	BCDE	SET	1	2	2	4		10	1	

(1)	(2)	(3)		(4)	(5)	(6)	(7)				(8)		
SMR CODE INDEX NO	FEDERAL STOCK NUMBER	DESCRIPTION  REFERENCE NO & MFR CODE	USABLE ON CODE	UNIT OF ISSUE	QTY INC IN UNIT PACK	QTY INC IN UNIT	15-DAY MAINTENANCE	ORGANIZATIONAL ALW (A)	(B)	(C)	(D)	ILLUS- TRATION (A) FIG NO	(B) ITEM NO
X2 O 00446 O 00447 X2 O 00448	5305-887-5666 5306-225-8497	BOLT, MACHINE: BELT GUARD MTG, 1/4-20 THD SIZE, 3/4 IN. LG BOLT, MACHINE: COMPRESSOR BELT GUARD BRACKET MTG BRACKET: BELT GUARD MTG M501A (11568)	DE BC BCE	EA	2 3 2		*	*	*	*	13 13 13	13 13 8	
X2 O 00449	4310-065-9622	BRACKET: BELT GUARD MTG M501B (11568)	BC	EA	1						13	2	
X2 O 00450		BRACKET, TOP M501D (11568)	E	EA	1						13	8	
X2 O 00451	4310-860-0035	FLYWHEEL, COMPRESSOR NR4-7 (11568)	CDE	EA	1						1	2	
X2 O 00452	4310-838-9846	FLYWHEEL: COMPRESSOR DRIVE NR4-7L (11568)	AF	EA	1						1	2	
X2 O 00453		FLYWHEEL: COMPRESSOR DRIVE NR47 (11568)	B	EA	1						1	2	
X2 O 00454		GUARD, BELT AND FLYWHEEL M501L (11568)	AF	EA	1						13	1	
X2 O 00455		GUARD, BELT AND FLYWHEEL J501 (11568)	D	EA	1						13	3	
X2 O 00456		GUARD, BLET: COMPRESSOR M501 (11568)	BCE	EA	1						13	3	
X2 O 00457		NUT 5-16N (11568)	E	EA	3						13		
O 00458 O 00459 O 00460 X2 O 00461	5310-543-2629 5310-584-5005 5310-543-2629	NUT, PLAIN, HEXAGON: COMPRESSOR BELT GUARD BRACKET MTG NUT, PLAIN, HEXAGON: COMPRESSOR BELT GUARD MTG NUT, PLAIN, HEXAGON: COMPRESSOR BELT GUARD MTG NUT, PLAIN, HEXAGON: FLYWHEEL TO COMPRESSOR CRANKSHAFT MTG, 1 1/8-12 THD SIZE NR4-105 (94834)	BC C C	EA EA EA EA	3 2 3 1		*	*	*	*	13 13 13 1	6 10 6 1	

(1)	(2)	(3)		(4)	(5)	(6)	(7)					(8)	
SMR CODE INDEX NO	FEDERAL STOCK NUMBER	DESCRIPTION  REFERENCE NO & MFR CODE	USABLE ON CODE	UNIT OF ISSUE	QTY INC IN UNIT PACK	QTY INC IN UNIT	15-DAY ORGANIZATIONAL MAINTENANCE ALW	(A)	(B)	(C)	(D)	FIG NO	(B) ITEM NO
							1-50	6-20	21-50	51-100			
O 00462	5310-050-3267	NUT, SELF-LOCKING: BELT GUARD MTG	F	EA	2		*	*	*	*			
O 00463	5305-225-3839	SCREW, CAP, HEXAGON HEAD: COMPRESSOR BELT GUARDS MTG		EA	2		*	*	*	*	13	4	
X2 O 00464	5310-194-1540	WASHER: BELT GUARD MTG 1-4FW (79807)	D	EA	2						13	9	
X2 O 00465		WASHER, FLAT 5-16W (11568)	E	EA	3						13	5	
X2 O 00466		WASHER, FLAT: BELT GUARD MTG 1-4W (79807)	EF	EA	2						13	7	
X2 O 00467	5310-014-7697	WASHER, FLAT:COMPRESSOR BELT GUARD BRACKET MTG,0.312 IN. ID, 0.875 IN. OD, 0.062 IN. THK	BC	EA	3						13	7	
O 00468	5310-809-4058	WASHER, FLAT: COMPRESSOR BELT GUARDS MTG		EA	2		*	*	*	*	13	5	
X2 O 00469		WASHER, LOCK 5-166W (11568)	E	EA	3						13	9	
X2 O 00470		WASHER, LOCK 1-4LW (79807)	E	EA	2						13	9	
X2 O 00471	5310-012-1753	WASHER, LOCK: BELT GUARD MTG 1-4ETL (79807)	D	EA	2						13	7	
O 00472	5310-011-4604	WASHER, LOCK: COMPRESSOR BELT GUARDS MTG		EA	2		*	*	*	*	13	9	
00473		5008 - AIR INTAKE											
X2 O 00474	4310-837-1359	FILTER ASSEMBLY, AIR 264L (11568)	A	EA	1						9		
X2 O 00475		BOLT, MACHINE: FILTER ASSEMBLY THRU BOLT, 10-24 THD SIZE, 4 1/2 IN. LG W/SQUARE NUT M636 (11568)		EA	1						9	4	
X1 00476		CLAMP: FILTER COVER ASSEMBLY, UPPER M52 (11568)		EA	1						9	7	
X1 00477	4310-993-4188	COVER: FILTER ASSEMBLY, LOWER M30 (11568)		EA	1						9	3	

(1)	(2)	(3)		(4)	(5)	(6)	(7)				(8)			
SMR CODE INDEX NO	FEDERAL STOCK NUMBER	DESCRIPTION  REFERENCE NO & MFR CODE	USABLE ON CODE	UNIT OF ISSUE	QTY INC IN UNIT PACK	QTY INC IN UNIT	15-DAY MAINTENANCE ALW	ORGANIZATIONAL ALW	(A)	(B)	(C)	(D)	ILLUS- TRATION (A) FIG NO	(B) ITEM NO
X1 00478		COVER: FILTER ASSEMBLY, LOWER M30L (11568) (USED WITH FILTER ASSEMBLY, STOCK NO. (11568) Z64A, ONLY)		EA		1						9	3	
X1 00479	4310-993-4198	COVER: FILTER ASSEMBLY, UPPER M31 (11568)		EA		1						9	6	
X1 00480		COVER: FILTER ASSEMBLY, UPPER M31L (11568) (USED WITH FILTER ASSEMBLY, STOCK NO. (11568) Z64A, ONLY)		EA		1						9	6	
X2 O 00481	4310-980-0140	ELEMENT: FILTER M632 (11568)		EA		1						9	2	
X1 00482	4310-999-6411	PLATE: FILTER BODY M54BL (11568) (USED WITH FILTER ASSEMBLY, STOCK NO. (11568) Z64A, ONLY)		EA		1						9	5	
X1 00483		PLATE: FILTER BODY M54B (11568)		EA		1						9	5	
X1 00484		SEPARATOR: FILTER ASSEMBLY M62 (11568) (USED WITH FILTER ASSEMBLY, STOCK NO. (11568) Z64A, ONLY)		EA		1						9	5	
X1 00485		SCREEN: FILTER ELEMENT CORE M633 (11568)		EA		1						9	1	
X2 O 00486		FILTER ASSEMBLY, AIR Z64A (11568) (SAME AS FILTER ASSEMBLY, STOCK NO. 4310-837-1359, EXCEPT WHERE INDIVIDUAL COMPONENTS ARE ANNOTATED)	BC	EA		1						9		
X1 00487		FERRULE: FILTER ASSEMBLY M32 (11568) (USED WITH FILTER ASSEMBLY, STOCK NO. (11568) Z64A, ONLY)		EA		1								
X2 O 00488	4310-934-8196	MANIFOLD: LOW PRESSURE INTAKE, AIR COMPRESSOR SE5-2ABL (11568)	AF	EA		1						4	10	
X2 O 00489		MANIFOLD: LOW PRESSURE INTAKE, AIR COMPRESSOR SE5-2AB (11568)	BCDE	EA		1						4	10	

(1)	(2)	(3)		(4)	(5)	(6)	(7)	(8)
SMR CODE INDEX NO	FEDERAL STOCK NUMBER	DESCRIPTION  REFERENCE NO & MFR CODE	USABLE ON CODE	UNIT OF ISSUE	QTY INC IN UNIT PACK	QTY INC IN UNIT	15-DAY ORGANIZATIONAL MAINTENANCE ALW (A) (B) (C) (D)	ILLUS- TRATION (A) (B) FIG ITEM NO NO
X2 O 00490		NUT, PLAIN, HEXAGON: MANIFOLDS MTG, 3/8-24 THD SIZE M462 (11568)		EA	2			4 9
O 00491 00492	5305-010-2705	SETSCREW: AIR FILTER TO LOW PRESSURE INTAKE MANIFOLDS MTG  5009 - UNLOADER SYSTEM COMPONENTS		EA	1	* * *	* * *	4 7
X1 00493	3110-606-8365	BALL, BEARING: RELIEF VALVE SE5-95 (11568) (COMPONENTS OF KIT, VALVE ASSEMBLY, STOCK NO. 4310-887-2622, SEE GROUP 5000)	E	EA	1			3 3
X1 00494	4310-625-6749	BODY, RELEASE VALVE SE30-101 (11568) (COMPONENT OF KIT, VALVE ASSEMBLY, STOCK NO. 4310-887-2622, SEE GROUP 5000)	E	EA	1			3 4
X2 O 00495	4310-896-5984	BREATHER: GOVERNOR HOUSING Z60A (11568)		EA	1			3 21
X1 00496		CAP, RELIEF VALVE SE5-85 (11568) (COMPONENT OF KIT, VALVE ASSEMBLY, STOCK NO. 4310-887-2622, SEE GROUP 5000)	E	EA	1			3 1
X2 O 00497		COVER, GOVERNOR HOUSING: AIR COMPRESSOR RE10-100L (11568)	AF	EA	1			3 20
X2 O 00498	4310-884-4518	COVER, GOVERNOR HOUSING: AIR COMPRESSOR RE10-100 (11568)	BCDE	EA	1			3 20
X2 O 00499		ELBOW, PIPE TOTUBE: ELBOW, HIGH PRESSURE EXHAUST MANIFOLD TO GOVERNOR LINE, BRASS, ONE END MALE, 1/8-27 THD SIZE, OTHER END FEMALE, 1/4 IN. TUBE, 7/16-24 THD SIZE 15-4A (87005)		EA	2			4 18
X1 00500	4310-585-4283	GASKET: GOVERNOR HOUSING COVER SE14-89 (11568) (COMPONENT OF GASKET SET, STOCK NO. 4310-882-5057, SEE GROUP 5000)		EA	1			3 19
X1 00501		GASKET: GOVERNOR UNLOADER SPRING SE5-88 (11568) (COMPONENT OF GASKET SET, STOCK NO. 4310-066-4206, SEE GROUP 5000)	DEF	EA	1			

(1)	(2)	(3)		(4)	(5)	(6)	(7)				(8)		
SMR CODE INDEX NO	FEDERAL STOCK NUMBER	DESCRIPTION  REFERENCE NO & MFR CODE	USABLE ON CODE	UNIT OF ISSUE	IN UNIT PACK	QTY INC INC	15-DAY MAINTENANCE (A)	ORGANIZATIONAL ALW (B)	(C)	(D)	FIG NO	ILLUS- TRATION (A)	(B) ITEM NO
X1 00502	5330-298-5554	GASKET: RELEASE VALVE BODY M122 (11568) (COMPONENT OF KIT, VALVE ASSEMBLY, STOCK NO. 4310-887-2622, SEE GROUP 5000)	E	EA		1					3	5	
X1 00503	4310-633-6114	GASKET: SHIM, GOVERNOR HOUSING (SET OF 3) SE14-30A (11568) (COMPONENT OF GASKET SET, STOCK NO. 4310-882-5057 AND STOCK NO. 4310-066-4206, SEE GROUP 5000)		EA		1					3	9	
X2 O 00504	4310-884-4582	GUIDE, SPRING: GOVERNOR SE5-87 (11568)		EA		1					3	16	
X2 O 00505		HOUSING, GOVERNOR: AIR COMPRESSOR NR4-80BL (11568)	F	EA		1							
X2 O 00506		HOUSING, GOVERNOR: AIR COMPRESSOR RE4-80AL (11568)	A	EA		1					3	8	
X2 O 00507		HOUSING, GOVERNOR: AIR COMPRESSOR NR4-80B (11568)	DE	EA		1					3	8	
X2 O 00508		HOUSING, GOVERNOR: AIR COMPRESSOR RE4-80A (11568)	BC	EA		1					3	8	
M O 00509	4310-986-9683	LINE ASSEMBLY: HIGH PRESSURE EXHAUST MANIFOLD TO GOVERNOR SB254 (11568) MANUFACTURE FROM:		EA		1					4	19	
O 00510	4730-142-1593	INVERTED NUT, TUBE COUPLING: HIGH PRESSURE EXHAUST MANIFOLD TO GOVERNOR LINE		EA		2	*	*	*	*			
P O 00511	4710-277-5525	TUBE, COPPER (24 IN. REQUIRED)		FT			SEE	GRP	9501				
M O 00512		LINE ASSEMBLY: HIGH PRESSURE EXHAUST MANIFOLD TO GOVERNOR UB254 (11568) MANUFACTURE FROM:	F	EA		1					4	19	
X2 O 00513	4730-289-1959	INVERTED NUT, TUBE COUPLING 11-14 (87005)	F	EA		2							
P O 00514	4710-277-5525	TUBE, COPPER (24 IN. REQUIRED)	F	FT			SEE	GRP	9501				



(1)	(2)	(3)		(4)	(5)	(6)	(7)				(8)	
SMR CODE INDEX NO	FEDERAL STOCK NUMBER	DESCRIPTION  REFERENCE NO & MFR CODE	USABLE ON CODE	UNIT OF ISSUE	QTY INC IN UNIT PACK	QTY INC IN UNIT	15-DAY MAINTENANCE (A)	ORGANIZATIONAL ALW (B)	(C)	(D)	ILLUS- TRATION (A) FIG NO	(B) ITEM NO
X2 O 00515	4310-977-2549	LINE ASSEMBLY: HIGH PRESSURE EXHAUST MANIFOLD TO GOVERNOR SE254 (11568)	E	EA		1					4	19
X1 00516		INVERTED NUT, TUBE COUPLING: HIGH PRESSURE EXHAUST MANIFOLD TO GOVERNOR LINE M27 (11568)	E	EA		2						
P O 00517	4310-877-2622	PARTS KIT, RELIEF VALVE: UNLOADER, GOVERNOR, RELEASE Z124-150 (11568)		EA		1	*	*	2	2		
X1 00518	3110-606-8365	BALL, BEARING: RELIEF VALVE, 1/4 IN. DIA SE5-95 (11568)		EA		1					3	3
X1 00519	4310-625-6749	BODY, RELEASE VALVE SE30-101 (11568)		EA		1					3	4
X1 00520		CAP, RELIEF VALVE SE5-85 (11568)		EA		1					3	1
X1 00521	5330-298-5554	GASKET: RELEASE VALVE BODY 2030 (79150)		EA		1					3	5
X1 00522	4310-654-3589	PLUNGER, RELIEF VALVE SE5-86A (11568)		EA		1					3	18
X1 00523	4310-625-6748	SLEEVE, PLUNGER: RELIEF VALVE SE5-97 (11568)		EA		1					3	6
X1 00524	4310-616-4373	SPRING, RELIEF VALVE SE5-91 (11568)		EA		1					3	2
O 00525	5315-846-4881	PIN, STRIAGHT, HEADLESS: GOVERNOR		EA		2	*	*	*	*	3	25
X2 O 00526		PIN, STRAIGHT, HEADLESS: GOVERNOR, 0.312 IN . DIA, 1.937 IN. LG SE5-92A (11568)	DF	EA		2						
X2 O 00527		PLATE, BAFFLE, UNLOADER: GOVERNOR RE14-104 (11568)		EA		1					3	7
X2 O 00528		PLATE, BAFFLE, UNLOADER: GOVERNOR NR104 (11568)	E	EA		1					3	7

(1)	(2)	(3)		(4)	(5)	(6)	(7)	(8)					
SMR CODE INDEX NO	FEDERAL STOCK NUMBER	DESCRIPTION  REFERENCE NO & MFR CODE	USABLE ON CODE	UNIT OF ISSUE	QTY INC IN UNIT PACK	QTY INC IN UNIT	15-DAY ORGANIZATIONAL MAINTENANCE ALW	(A)	(B)	(C)	(D)	ILLUS- TRATION (A)	(B) ITEM NO
							1-50	6-20	21-50	51-100	NO	NO	
X1 00529	4310-654-3589	PLUNGER, RELIEF VALVE SE5-86A (11568) (COMPONENT OF KIT, VALVE ASSEMBLY, STOCK NO. 4310-887-2622, SEE GROUP 5000)	E	EA		1						3	18
X2 O 00530		SCREW, CAP, HEXAGON HEAD: GOVERNOR HOUSING MTG, 3/8-16THD SIZE, 1 IN. LG RE20-106 (11568)		EA		4						3	10
X2 O 00531	5305-261-1868	SCREW, CAP, HEXAGON HEAD: GOVERNOR HOUSING MTG M472 (11568)	E	EA		4						3	10
X2 O 00532		SCREW, CAP, HEXAGON HEAD: GOVERNOR SPINDLE 7/16-20 THD SIZE, 1 IN. LG SE5-94 (11568)		EA		1						3	13
X2 O 00533		SCREW, MACHINE: GOVERNOR COVER HOUSING MTG, NO. 10-32 THD SIZE, 5/8 IN. LG SE14-84 (11568)		EA		6						3	22
X1 00534	4310-625-6748	SLEEVE, PLUNGER: RELIEF VALVE SE5-97 (11568) (COMPONENT OF KIT, VALVE ASSEMBLY, STOCK NO. 4310-887-2622, SEE GROUP 5000)	E	EA		1						3	6
X2 O 00535	2990-863-0926	SPINDLE, GOVERNOR: UNLOADER SE5-83B (11568)		EA		1						3	11
X2 O 00536	4310-896-2104	SPRING, HELICAL, COMPRESSION: GOVERNOR H110P (11568)		EA		2						3	23
X1 00537	4310-616-4373	SPRING, RELIEF VALVE SE5-91 (11568) (COMPONENT OF KIT, VALVE ASSEMBLY, STOCK NO. 4310-887-2622, SEE GROUP 5000)	E	EA		1						3	2
X2 O 00538	4310-850-5541	SPRING, UNLOADER: GOVERNOR SE5-90 (11568)		EA		1						3	15
X2 O 00539		VALVE, SAFETY: RELIEF, EXHAUST MANIFOLD, 200 PSI Z206-200 (75336)	E	EA		1						4	4
X2 O 00540		VALVE, SAFETY: RELIEF, EXHAUST MANIFOLD, 200 PSI, 1/4-18 THD SIZE FIG112-200 (75336)	ABD	EA		1						4	4
X2 O 00541		VALVE, SAFETY: RELIEF, EXHAUST MANIFOLD, 200 PSI, 1/4-18 THD SIZE FIG112-1-4-200 (753360)	F	EA		1						4	4
X2 O 00542		VALVE, SAFETY: RELIEF, HIGH PRESSURE MANIFOLDS, INTERCOOLER TUBES FIG125-70 (75336)	D	EA		1						4	8

(1)	(2)	(3)		(4)	(5)	(6)	(7)				(8)	
SMR CODE INDEX NO	FEDERAL STOCK NUMBER	DESCRIPTION  REFERENCE NO & MFR CODE	USABLE ON CODE	UNIT OF ISSUE	QTY INC IN UNIT PACK	QTY INC IN UNIT	15-DAY MAINTENANCE (A)	ORGANIZATIONAL ALW (B)	(C)	(D)	ILLUS- TRATION (A) FIG NO	(B) ITEM NO
X2 O 00543		VALVE, SAFETY: RELIEF, HIGH PRESSURE MANIFOLDS, INTERCOOLER TUBES, 70 PSI Z67-70 (75536)	E	EA		1					4	8
X2 O 00544		VALVE, SAFETY RELIEF: HIGH PRESSURE MANIFOLDS, INTERCOOLER TUBE, 75 PSI, 1/4-18 THD SIZE FIG125-1-475LB (75336)		EA		1					4	8
X2 O 00545		WASHER, FLAT: GOVERNOR UNLOADER SPRING, 3/8 IN. ID, 7/8 IN. OD, 0.083 IN. THK SE5-88 (11568)		EA		1					3	14
X2 O 00546		WASHER, LOCK: GOVERNOR SPINDLE SCREW, 0.446 IN. ID, 0.784 IN. 0.109 IN. THK M466 (11568)		EA		1					3	12
X2 O 00547	4310-896-2105	WEIGHT, GOVERNOR: UNLOADER SE5-82 (11568)		EA		2					3	17
X2 O 00548		WEIGHT, GOVERNOR: UNLOADER SE5-82A (11568)	EA	EA		2					3	17
X2 O 00549		WIRE, LOCK: GOVERNOR WEIGHT PINS SE5-98 (11568)		EA		1					3	24
00550		5010 - COMPRESSOR COOLING										
X2 O 00551		FITTING, COMPRESSION: EXHAUST AND AFTERCOOLER TUBE TO AIR RECEIVERS, STEEL, 3/4-14 THD SIZE, MALE, 1/16 THD SIZE FEMALE, FOR 3/4 IN. TUBE RE10-99 (11568)		EA		1					4	14
O 00552	4730-850-7971	INVERTED NUT, TUBE COUPLING: EXHAUST, AFTERCOOLER, AND INTERCOOLER TUBES TO AIR RECEIVERS AND MANIFOLDS		EA		4	*	*	*	*	4	2
X2 O 00553		MANIFOLD: HIGH PRESSURE EXHAUST AIR COMPRESSOR NR2B (11568)	DE	EA		1					4	5
X2 O 00554	4310-075-1685	MANIFOLD: HIGH PRESSURE EXHAUST, AIR COMPRESSOR NR2ABL (11568)	A	EA		1					4	5
X2 O 00555		MANIFOLD: HIGH PRESSURE EXHAUST NR2BL (11568)	F	EA		1					4	5
X2 O 00556	4310-961-3667	MANIFOLD: HIGH PRESSURE EXHAUST, AIR COMPRESSOR NR2AB (11568)	BC	EA		1					4	5

(1)	(2)	(3)		(4)	(5)	(6)	(7)				(8)			
SMR CODE INDEX NO	FEDERAL STOCK NUMBER	DESCRIPTION  REFERENCE NO & MFR CODE	USABLE ON CODE	UNIT OF ISSUE	QTY INC IN UNIT PACK	QTY INC IN UNIT	15-DAY MAINTENANCE	ORGANIZATIONAL ALW	(A)	(B)	(C)	(D)	ILLUS- TRATION (A) FIG NO	(B) ITEM NO
X2 O 00557		MANIFOLD: HIGH PRESSURE INTAKE SE5-2CL (11568)	F	EA		1						4	6	
X2 O 00558		MANIFOLD: HIGH PRESSURE INTAKE, AIR COMPRESSOR SE5-2C1 (11568)	A	EA		1						4	6	
X2 O 00559		MANIFOLD: HIGH PRESSURE INTAKE, AIR COMPRESSOR SE5-2C (11568)	DE	EA		1						4	6	
X2 O 00560	2815-928-6078	MANIFOLD: HIGH PRESSURE INTAKE, AIR COMPRESSOR SE5-2A (11568)	BC	EA		1						4	6	
X2 O 00561		MANIFOLD: LOW PRESSURE EXHAUST, AIR COMPRESSOR NR2L (11568)	AF	EA		1						4	21	
X2 O 00562	4310-961-3666	MANIFOLD: LOW PRESSURE EXHAUST, AIR COMPRESSOR NR2 (11568)	BCDE	EA		1						4	21	
O 00563	5310-265-9215	NUT, PLAIN, HEXAGON: MANIFOLDS MTG		EA		6	*	*	*	*		4	9	
O 00564	4730-851-6259	SLEEVE, COMPRESSION, TUBE-HOSE FITTING: EXHAUST, AFTERCOOLER, AND INTERCOOLER TUBE TO AIR RECEIVERS AND MANIFOLDS		EA		4	*	*	*	*		4	3	
X2 O 00565		TUBE, AFTERCOOLER: AIR COMPRESSOR TO AIR RECEIVER NR4-1H (11568)	BC	EA		1						4	20	
X2 O 00566		TUBE, EXHAUST: AIR COMPRESSOR RECEIVER, 3/4 IN. OD, 19 IN. LG NR4-1H (11568)	DE	EA		1						4	1	
M O 00567		TUBE, EXHAUST: AIR COMPRESSOR TO AIR RECEIVER, COPPER, 3/4 IN. OD, 19 IN. LG NR4-1P (11568) MANUFACTURE FROM:	AF	EA		1						4	20	
P O 00568	4710-277-7748	TUBE, COPPER (19 IN. REQUIRED)	AF	FT			SEE	GRP	9501					
X2 O 00569		TUBE, INTERCOOLER: LOW TO HIGH PRESSURE CYLINDERS RE12 (11568)	F	EA		1						4	1	
X2 O 00570	4310-977-8670	TUBE, INTERCOOLER: LOW TO HIGH PRESSURE CYLINDERS RE4-12A (11568)		EA		1						4	1	
X2 O 00571		TUBE, INTERCOOLER: LOW TO HIGH PRESSURE CYLINDERS RE4-12 (11568)	DE	EA		1						4	20	

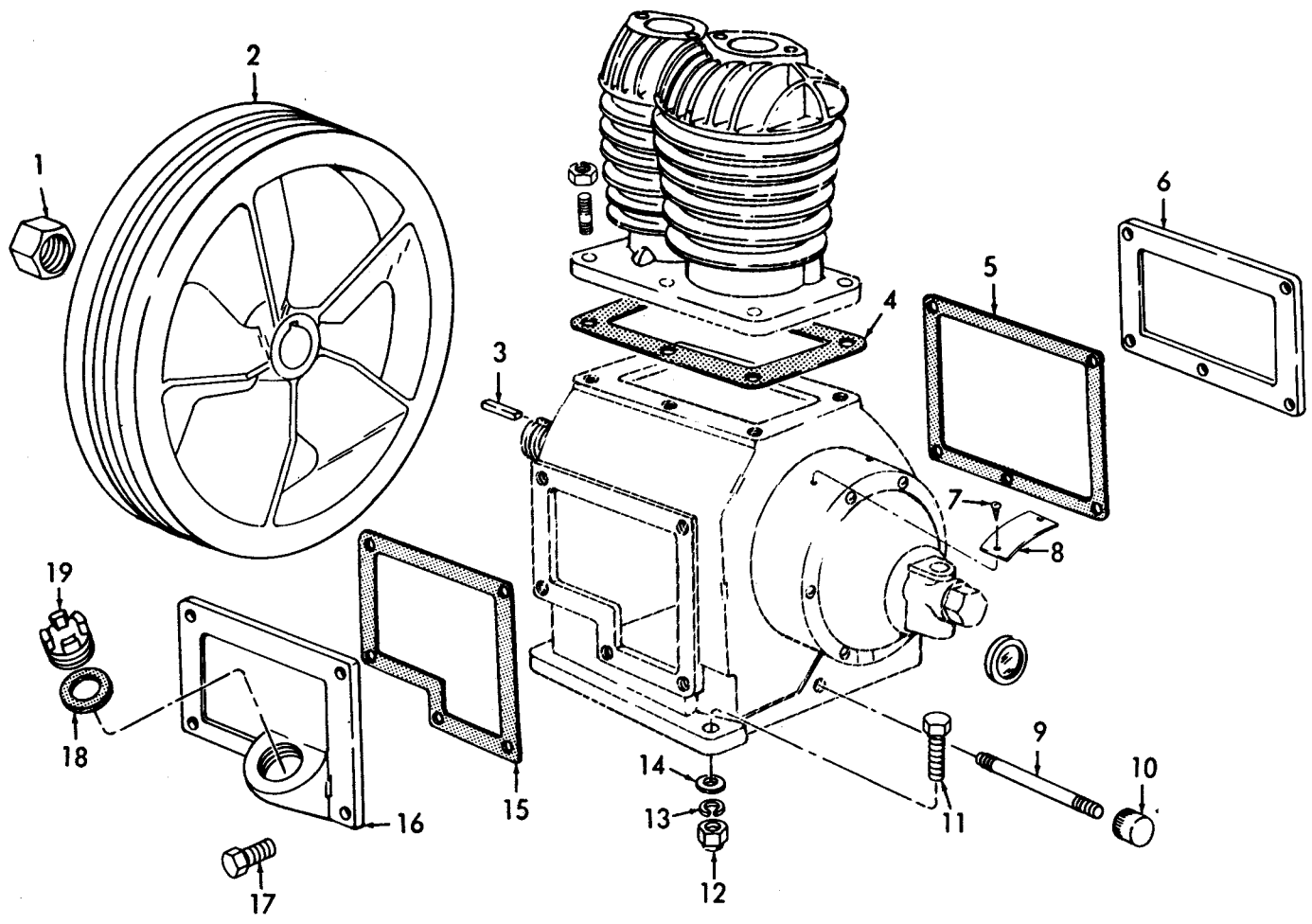
(1)	(2)	(3)		(4)	(5)	(6)	(7)				(8)	
SMR CODE INDEX NO	FEDERAL STOCK NUMBER	DESCRIPTION  REFERENCE NO & MFR CODE	USABLE ON CODE	UNIT OF ISSUE	QTY INC IN UNIT PACK	QTY INC IN UNIT	15-DAY MAINTENANCE (A)	ORGANIZATIONAL ALW (B)	(C)	(D)	ILLUS- TRATION (A) FIG NO	(B) ITEM NO
00572		5014 - AIR RECEIVER										
O 00573	5306-225-8503	BOLT, MACHINE: AIR RECEIVER MTG	A	EA	1	*	*	*	*	6	20	
X2 O 00574	5306-021-5371	BOLT, MACHINE: AIR RECEIVER MTG, 5/16-18 THD SIZE, 2 IN. LG	A	EA	1					6	15	
O 00575	5306-225-8503	BOLT, MACHINE: RECEIVER MTG		EA	2	*	*	*	*	7	22	
O 00576	4730-684-4648	BUSHING, PIPE: SAFETY VALVE TO RECEIVER	BC	EA	1	*	*	*	*	14	1	
X2 O 00577	4310-874-3181	COCK, DRAIN: AIR RECEIVER 1825A (92976)		EA	1						14	
X2 O 00578	4310-874-3181	COCK, DRAIN: AIR RECEIVER M629 (11568)	DE	EA	1					14	12	
X2 O 00579	4310-874-3181	COCK, DRAIN: AIR RECEIVER, BRASS, 1/4-18 THD SIZE, MALE 1925A (92976)		EA	1					6	17	
O 00580	4730-257-5028	ELBOW, PIPE: CHECK VALVE TO RECEIVER TEE	BCD	EA	1	*	*	*	*	4	15	
X2 O 00581		ELBOW, PIPE: STREET, CHECK VALVE TO RECEIVER PF1205D (14959)		EA	1							
X2 O 00582		NIPPLE 1-2X1-5 (11568)	E	EA	1							
O 00583	4730-277-9657	NIPPLE, PIPE: CHECK AND SAFETY VALVE, TEE TO RECEIVER	BCDE	EA	1	*	*	*	*	14	3	
O 00584	4730-277-9659	NIPPLE, PIPE: CHECK VALVE TO TEE, AIR RECEIVER	BC	EA	1	*	*	*	*	4	17	
X2 O 00585		NUT, SELF-LOCKING, HEXAGON: AIR RECEIVER MTG, 5/16-18 THD SIZE 29NE058 (11568)	AF	EA	2					6	26	
O 00586	4730-287-0022	PLUG, PIPE: AIR RECEIVER	BC	EA	2	*	*	*	*	14	13	
X2 O 00587		RECEIVER, AIR 1136H34 (11568)	BDE	EA	1					14	5	
X2 O 00588		LOOP, TIE DOWN AND LIFTING M627 (11568)	B	EA	4					14	14	

(1)	(2)	(3)		(4)	(5)	(6)	(7)				(8)			
SMR CODE INDEX NO	FEDERAL STOCK NUMBER	DESCRIPTION  REFERENCE NO & MFR CODE	USABLE ON CODE	UNIT OF ISSUE	QTY INC IN UNIT PACK	QTY INC IN UNIT	15-DAY MAINTENANCE	ORGANIZATIONAL ALW	(A)	(B)	(C)	(D)	ILLUS- TRATION (A) FIG NO	(B) ITEM NO
X2 O 00589		RECEIVER, AIR 1136G34 (868223)	C	A		1						14	5	
X2 O 00590	4310-930-2561	RECEIVER, AIR: COMPRESSOR, 200 PSI P2202B (11568)	AF	EA		1						6	16	
X2 O 00591		TEE, PIPE: CHECK AND SAFETY VALVE TO RECEIVER 1-2T (86285)	DE	EA		1						14	2	
O 00592	4730-257-2119	TEE, PIPE: CHECK AND SAFETY VALVE TO RECEIVER	BC	EA		1	*	*	*	*		14	2	
P O 00593	4310-532-7791	VALVE ASSEMBLY, CHECK Z220A (11568)	BC	EA		1	*	*	*	*		4	16	
X2 O 00594		VALVE ASSEMBLY, CHECK Z220B (11568)	DE	EA		1						4	16	
X1 00595		BODY: CHECK VALVE M449B (11568)	DE	EA		1								
X1 00596		CAP: CHECK VALVE M450A (11568)	DE	EA		1								
X1 00597		DISK: CHECK VALVE H41P (11568)	DE	EA		1								
X1 00598	5310-020-5186	NUT, BRASS: CHECK VALVE 1-4-20N (87764)	DE	EA		1								
X1 00599		PLUNGER: CHECK VALVE M454 (11568)	DE	EA		1								
X1 00600	5305-011-3976	SCREW: CHECK VALVE, 1/4-20 THD SIZE, 5/8 IN. LG	DE	EA		1								
X1 00601	4310-875-4108	SPRING: CHECK VALVE M453A (11568)	DE	EA		1								
P O 00602	4820-888-9302	VALVE, UNLOADER: AIR RECEIVER PRESSURE RELIEF FP7410 (71342)	A	EA		1	*	*	*	*		6	18	
X1 00603		BODY: UNLOADER VALVE 7404 (71342)	A	EA		1								

(1)	(2)	(3)		(4)	(5)	(6)	(7)				(8)		
SMR CODE INDEX NO	FEDERAL STOCK NUMBER	DESCRIPTION  REFERENCE NO & MFR CODE	USABLE ON CODE	UNIT OF ISSUE	QTY INC IN UNIT PACK	QTY INC IN UNIT	15-DAY MAINTENANCE ALW	ORGANIZATIONAL ALW (A)	(B)	(C)	(D)	ILLUS- TRATION (A)	(B) ITEM NO
							1-50	6-20	21-50	51-100	NO	NO	
X1 00604		CAP,BODY: UNLOADER VALVE	A	EA		1							
X1 00605	5330-884-0705	GASKET, CAP: UNLOADER VALVE 7396 (71342)	A	EA		1							
X1 00606		SCREW, PRESSURE: UNLOADER VALVE 7934 (71342)	A	EA		1							
X1 00607		SEAT, COMPOSITION: UNLOADER VALVE 6382 (71342)	A	EA		1							
X1 00608		SEAT, SCREW: UNLOADER VALVE 6383 (71342)	A	EA		1							
X1 00609		SEAT, SHELL: UNLOADER VALVE 6381 (71342)	A	EA		1							
X1 00610		SPRING: UNLOADER VALVE 6711 (71342)	A	EA		1							
P O 00611	4820-888-9302	VALVE, UNLOADER: RECEIVER PRESSURE RELIEF FP175 (71342)	F	EA		1	*	*	*	*	6	18	
X2 O 00612 00613	5310-014-7697	WASHER, FLAT: AIR RECEIVER MTG, 0.312 IN. ID, 0.062 IN. OD, 0.062 IN. THK 5015 - AIR DISCHARGE SYSTEM		EA		4					6	21	
O 00614	4730-391-3771	ADAPTER, STRAIGHT TO TUBE: AIR HOSE TO RECEIVER AND AIR CHUCK		EA		2	*	*	*	*	6	19	
O 00615	4730-391-3771	ADAPTER, STRAIGHT, PIPE TO TUBE: AIR HOSE TO RECEIVER AND AND INFLATOR GAGE		EA		2	*	*	*	*	14	8	
X2 O 00616		ADAPTER, STRAIGHT, PIPE TO TUBE: AIR HOSE TO RECEIVER AND INFLATOR GAGE LL2-40 (11568)	D	EA		2					14	8	
X2 O 00617	4730-202-6669	BUSHING, PIPE: GLOBE VALVE M554 (11568)	E	EA		2					14	9	
O 00618	4730-277-8809	BUSHING, PIPE: GLOBE VALVE	BC	EA		1	*	*	*	*	14	9	
X2 O 00619	4730-202-6669	BUSHING, PIPE: GLOBE VALVE PF604B (26403)	D	EA		1					14	9	

(1)	(2)	(3)		(4)	(5)	(6)	(7)				(8)			
SMR CODE INDEX NO	FEDERAL STOCK NUMBER	DESCRIPTION  REFERENCE NO & MFR CODE	USABLE ON CODE	UNIT OF ISSUE	QTY INC IN UNIT PACK	QTY INC IN UNIT	15-DAY MAINTENANCE	ORGANIZATIONAL ALW	(A)	(B)	(C)	(D)	(A) FIG NO	(B) ITEM NO
O 00620 X2 O 00621	4730-050-1717	NIPPLE, PIPE: GLOBE VALVE	BVD	EA	1	*	*	*	*			14	11	
X2 O 00622		NIPPLE, PIPE: GLOBE VALVE 1-2CN (11568)	E	EA	1							14	11	
X2 O 00622		VALVE, GLOBE: AIR RECEVIER HOSE SHUT-OFF, BRASS OR BRONZE, 1/2-14 THD SIZE, 125 PSI T1014 (91895)	BC	EA	1							14	10	
X2 O 00623	4820-274-7389	VALVE, GLOBE: AIR RECEIVER SHUT-OFF M523 (11568)	DE	EA	1							14	10	
00624		GROUP 95 - GENERAL USE STANDARIZED PARTS												
00625		9501 - BULK MATERIAL												
P O 00626	5330-298-5674	CORK, SHEET: 1/16 IN. THK, 24 IN. W, 24 IN. LG	A	SH		*	*	*	*					
P O 00627	5330-262-2543	FELT, STRIP: 3 3/4 IN. W, 3/16 IN. THK, 12 9/16 IN. LG	A	FT		*	*	*	*					
P O 00628	4710-278-6398	TUBE, ALUMINUM: 1/4 IN. DIA		FT		*	*	*	*					
P O 00629	4710-277-5525	TUBE, COPPER: 0.250 IN. DIA		FT		*	*	*	*					
P O 00630	4710-277-7748	TUBE, COPPER: 0.750 IN. DIA	A	FT		*	*	*	*					
P O 00631	6145-192-2575	WIRE, ELECTRICAL: COPPER, NO. 10 AWG, 0.170 IN. DIA, SOLID CONDUCTOR	BC	FT		*	*	*	*					
P O 00632	6145-161-5415	WIRE, ELECTRICAL: COPPER, NO. 14 AWG, SOLID CONDUCTOR	BC	FT		*	*	*	*					
P O 00633	6145-160-5137	WIRE, ELECTRICAL: COPPER, TINNED FINISH, NO. 14 AWG, 19 STRANDS OF NO. 27 AWG		FT		*	*	*	*					
P O 00634	8305-430-9284	WEBBING, TEXTILE: COTTON, 1/8 IN. THK, 10 IN. W, 10 IN. LG	A	FT		*	*	*	*					



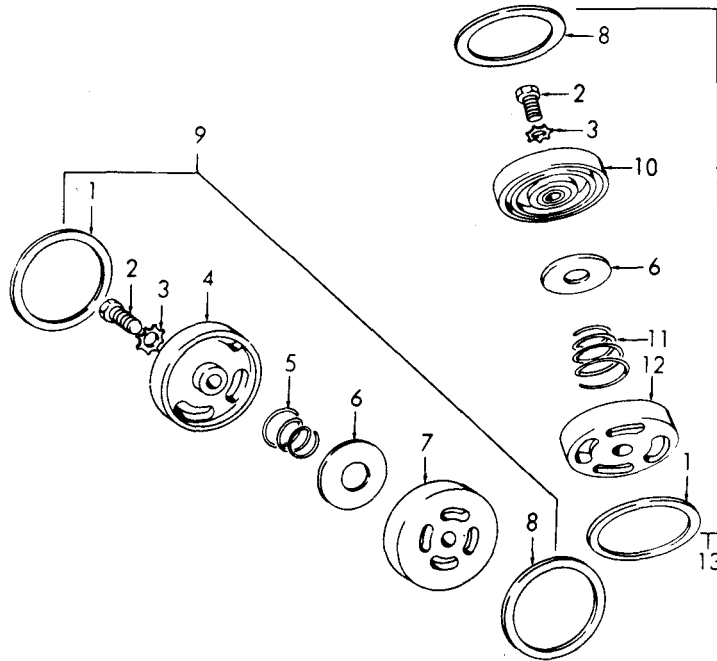


ME 4310-241-20P/1

Figure 1. Compressor, Flywheel, Oil Drain, and Related Parts.

## INDEX TO PARTS, FIGURE 1

Reference Number	Functional Group	Item, Name	Reference Number	Functional Group	Item Name
1	5007	NUT	11	5000	SCREW
2	5007	FLYWHEEL	12	5000	NUT
3	5002	KEY	13	5000	WASHER
4	5001	GASKET	14	5000	WASHER
5	5001	GASKET	15	5001	GASKET
6	5001	PLATE	16	5001	PLATE
7	2210	SCREW	17	5001	BOLT
8	2210	PLATE	18	5006	GASKET
9	5001	NIPPLE	19	5006	CAP
10	5001	CAP			

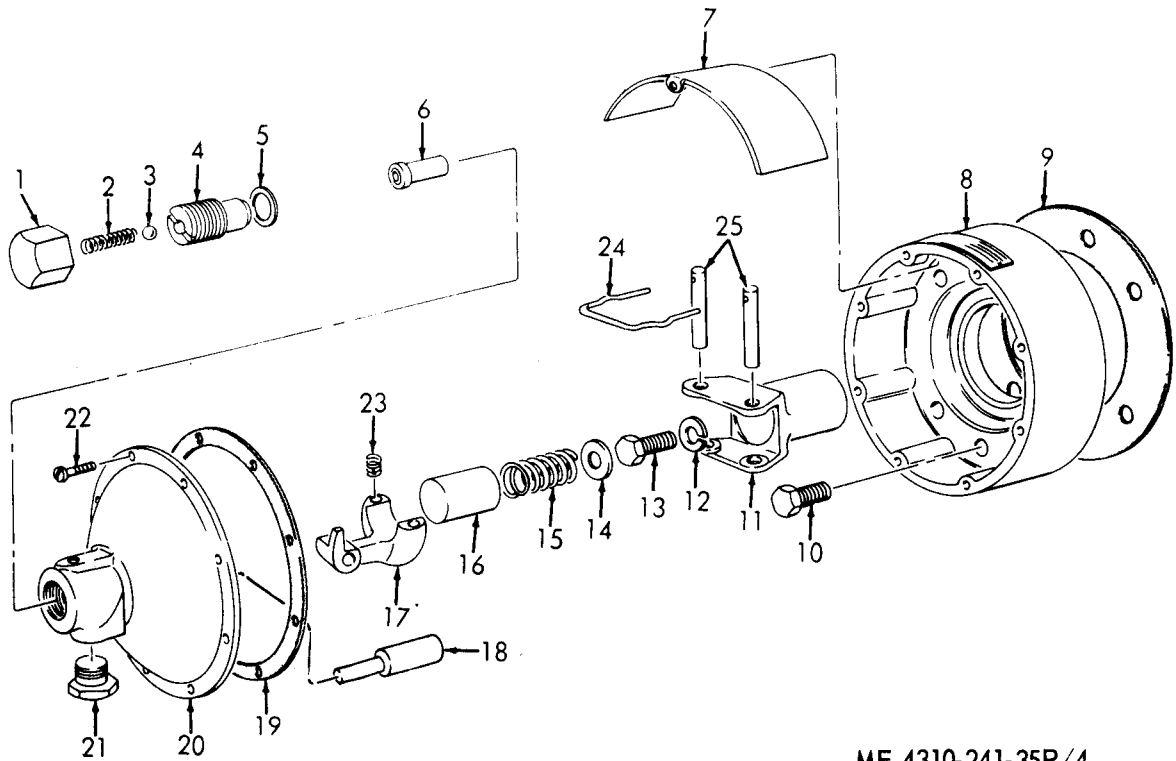


ME 4310-241-35P/3

Figure 2. High and Low Pressure Valve Assemblies.

INDEX TO PARTS, FIGURE 2

Reference Number	Functional Group	Item Name	Reference Number	Functional Group	Item Name
1	5005	GASKET	8	5005	GASKET
2	5005	SCREW	9	5005	VALVE AY
3	5005	WASHER	10	5005	SEAT
4	5005	CAGE	11	5005	SPRING
5	5005	SPRING	12	5005	CAGE
6	5005	DISK	13	5005	VALVE AY
7	5005	SEAT			

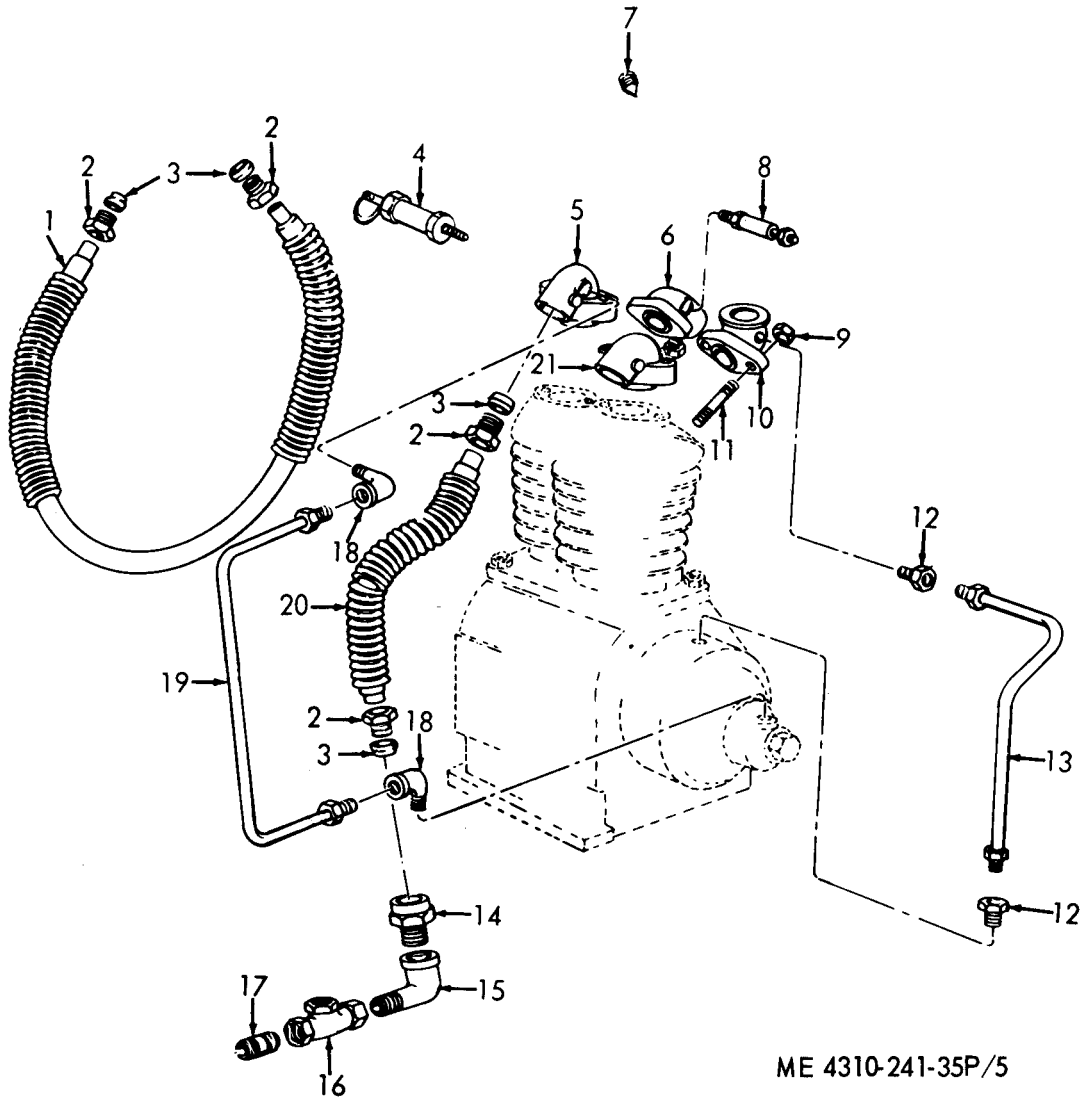


ME 4310-241-35P/4

Figure 3. Governor and Relief Valve.

INDEX TO PARTS, FIGURE 3

Reference Number	Functional Group	Item Name	Reference Number	Functional Group	Item Name
1	5009	CAP	14	5009	WASHER
2	5009	SPRING	15	5009	SPRING
3	5009	BALL	16	5009	GUIDE
4	5009	BODY	17	5009	WEIGHT
5	5009	GASKET	18	5009	PLUNGER
6	5009	SLEEVE	19	5009	GASKET
7	5009	PLATE	20	5009	COVER
8	5009	HOUSING	21	5009	BREATHER
9	5009	GASKET	22	5009	SCREW
10	5009	SCREW	23	5009	SPRING
11	5009	SPINDLE	24	5009	WIRE
12	5009	WASHER	25	5009	PIN
13	5009	SCREW			

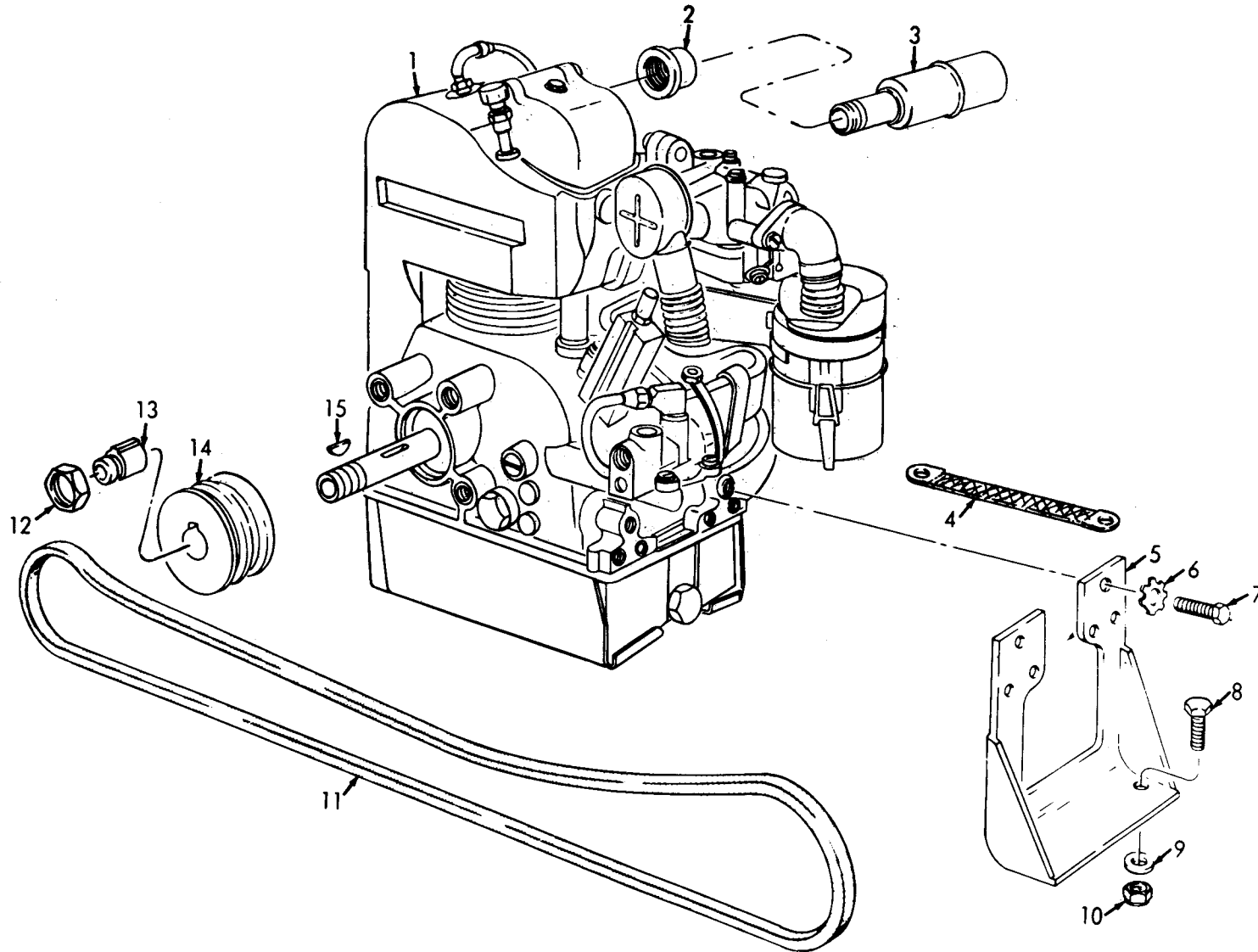


ME 4310-241-35P/5

Figure 4. Manifolds, Valves, Tubes, and Fittings.

INDEX TO PARTS, FIGURE 4

Reference Number	Functional Group	Item Name	Reference Number	Functional Group	Item Name
1	5010	TUBE	11	5001	STUD
2	5010	INVERTED NUT	12	5006	ADAPTER
3	5010	SLEEVE	13	5006	TUBE AY
4	5009	VALVE	14	5010	FITTING
5	5010	MANIFOLD	15	5014	ELBOW
6	5010	MANIFOLD	16	5014	VALVE AY
7	5008	SETSCREW	17	5014	NIPPLE
8	5009	VALVE	18	5009	ELBOW
9	5008	NUT	19	5009	LINE AY
10	5010	NUT	20	5010	TUBE
11	5008	MANIFOLD	21	5010	MANIFOLD



ME 4310-241-35P/6

Figure 5. Engine, Bracket, Muffler, Oil Drain and Pulley.

INDEX TO PARTS, FIGURE 5

Reference Number	Functional Group	Item Name	Reference Number	Functional Group	Item Name
1	0100	ENGINE	9	0100	WASHER
2	0401	ADAPTER	10	0100	NUT
3	0401	MUFFLER	11	5007	BELT
4	1501	STRAP	12	0102	NUT
5	0100	BRACKET	13	0102	SLEEVE
6	0100	WASHER	14	0102	PULLEY
7	0100	SCREW	15	0102	KEY
8	0100	SCREW			

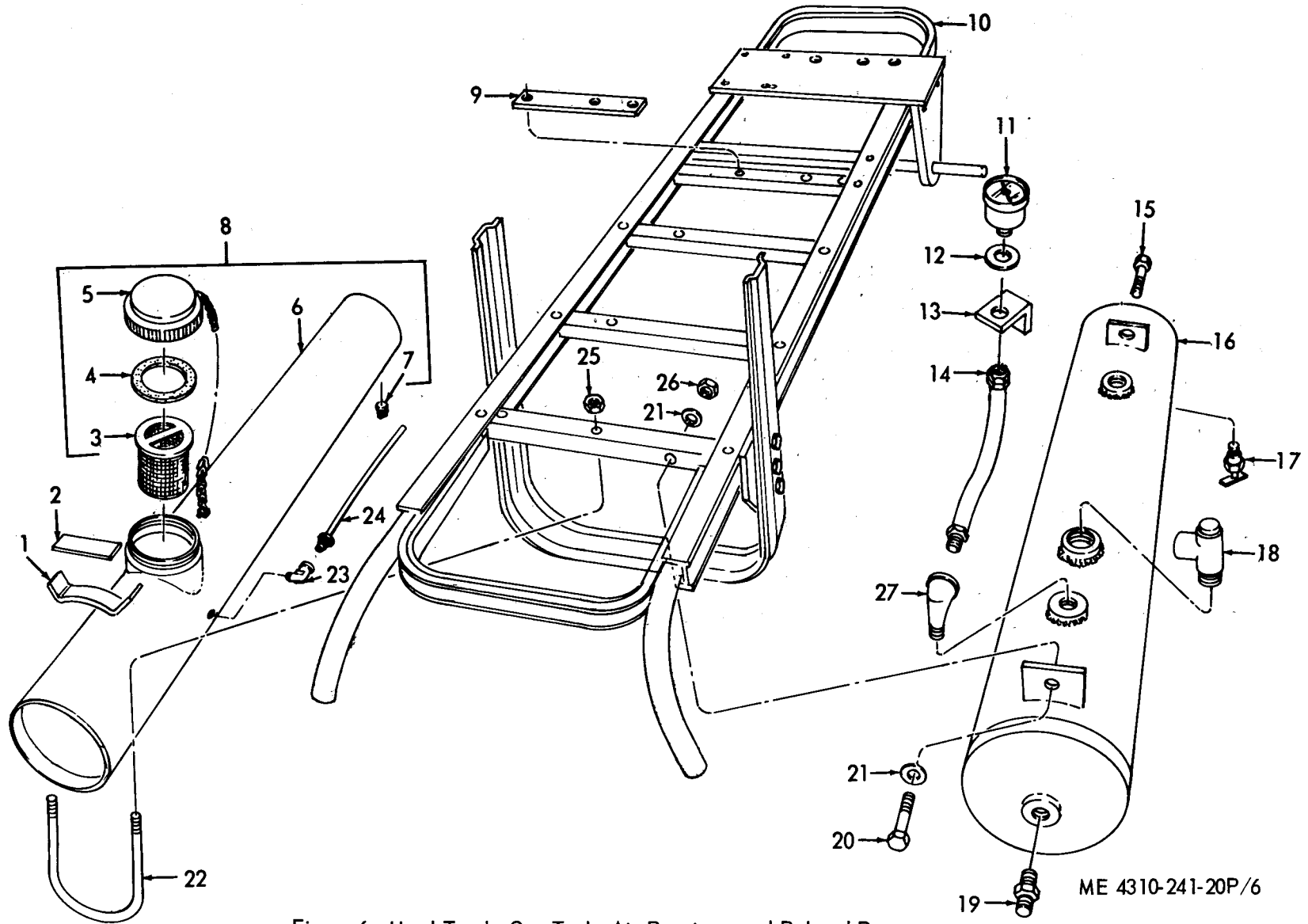


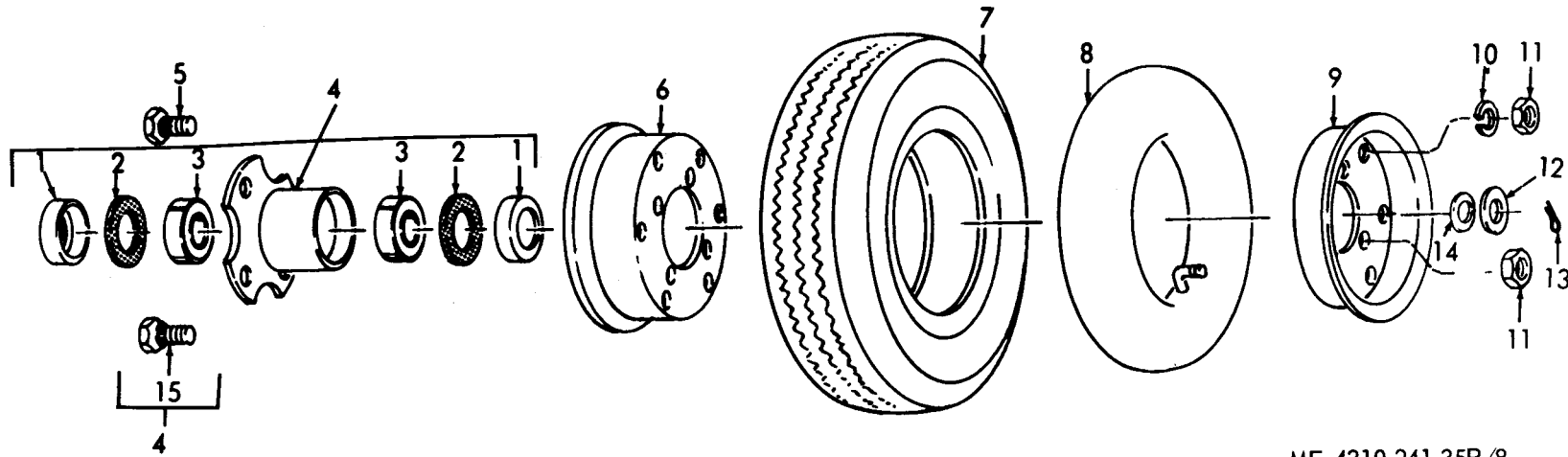
Figure 6. Hand Truck, Gas Tank, Air Receiver, and Related Parts.

ME 4310-241-20P/6



INDEX TO PARTS, FIGURE 6

Reference Number	Functional Group	Item Name	Reference Number	Functional Group	Item Name
1	0306	BRACKET	15	5014	BOLT
2	0306	STRIP	16	5014	RECEIVER
3	0306	STRAINER AY	17	5014	COCK
4	0306	GASKET	18	5014	VALVE
5	0306	CAP AND CHAIN	19	5015	ADAPTER
6	0306	TANK	20	5014	BOLT
7	0306	PLUG	21	5014	WASHER
8	0306	TANK AY	22	0306	BOLT U
9	0100	SPACER	23	0306	ELBOW
10	1501	HAND TRUCK AY	24	0306	LINE AY
11	4702	GAGE	25	0306	NUT
12	4702	WASHER	26	5014	NUT
13	4702	BRACKET	27	4702	ELBOW
14	4702	HOSE AY			

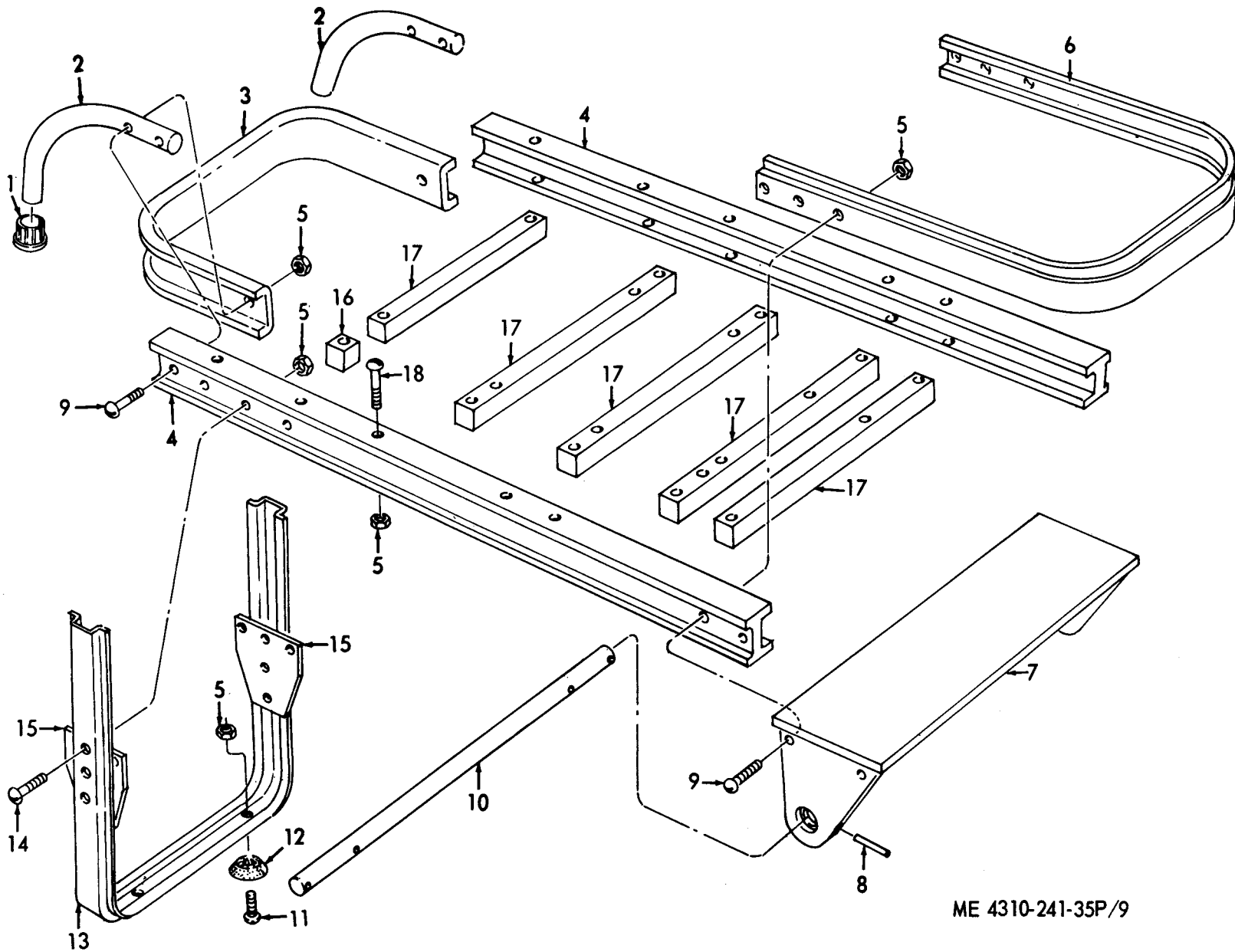


ME 4310-241-35P/8

Figure 7. Wheel, Tire, and Hub Assembly.

## INDEX TO PARTS, FIGURE 7

Reference Number	Functional Group	Item Name	Reference Number	Functional Group	Item Name
1	1311	COVER	9	1311	DISK
2	1311	WASHER	10	1311	WASHER
3	1311	BEARING	11	1311	NUT
4	1311	HUB AY	12	1311	WASHER
5	1311	SCREW	13	1311	PIN
6	1311	DISK	14	1311	WASHER
7	1313	TIRE	15	1311	BOLT
8	1313	TUBE			

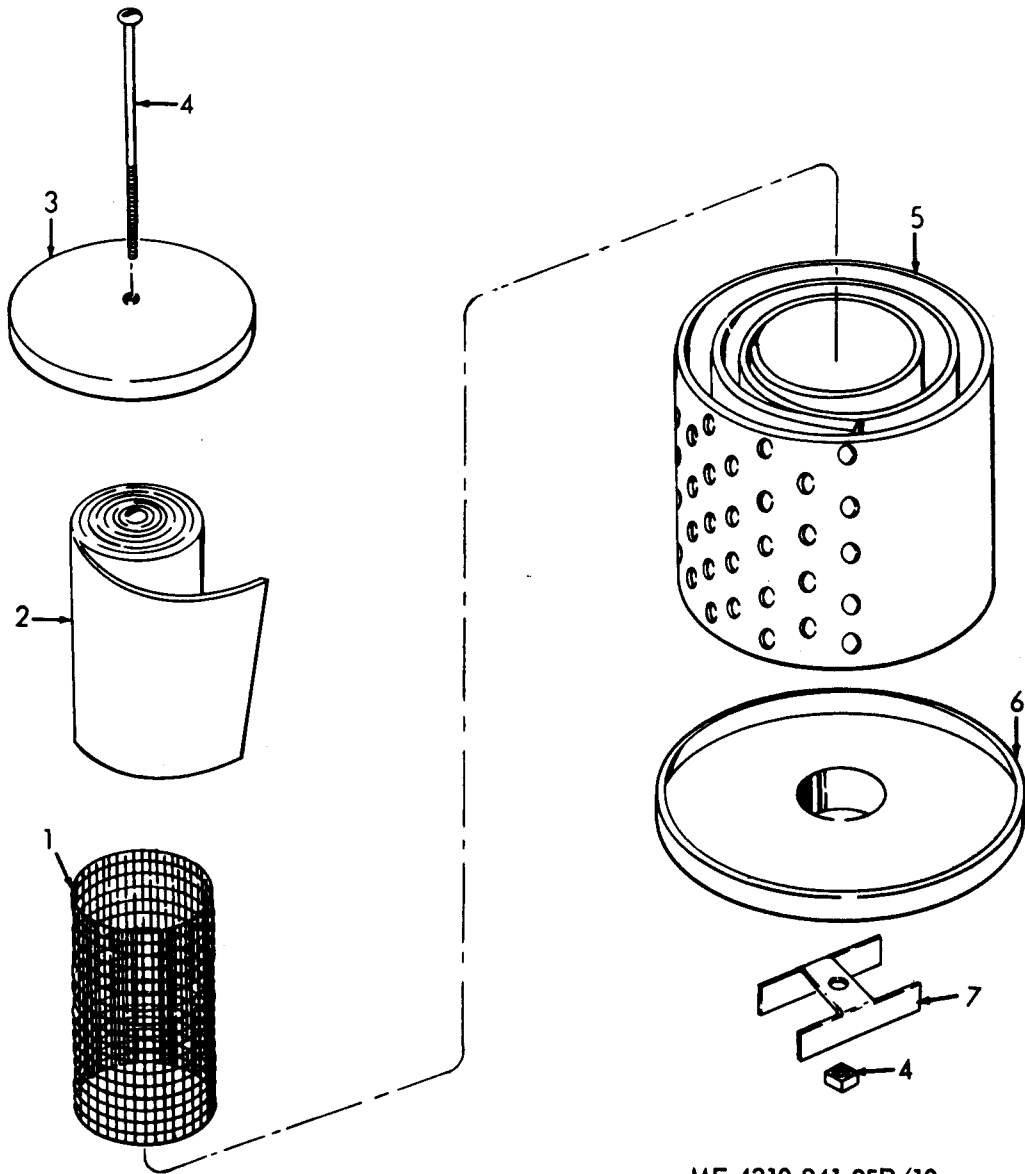


ME 4310-241-35P/9

Figure 8. Hand Truck Frame.

## INDEX TO PARTS, FIGURE 8

Reference Number	Functional Group	Item Name	Reference Number	Functional Group	Item Name
1	1501	TIP	10	1000	AXLE
2	1501	HANDLE	11	1501	SCREW
3	1501	BUMPER	12	1501	FOOT
4	1501	RAIL	13	1501	LEG
5	1501	NUT	14	1501	SCREW
6	1501	BUMPER	15	1501	GUSSET
7	1501	NOSE	16	1501	SHIM
8	1000	PIN	17	1501	MEMBER
9	1501	SCREW	18	1501	SCREW

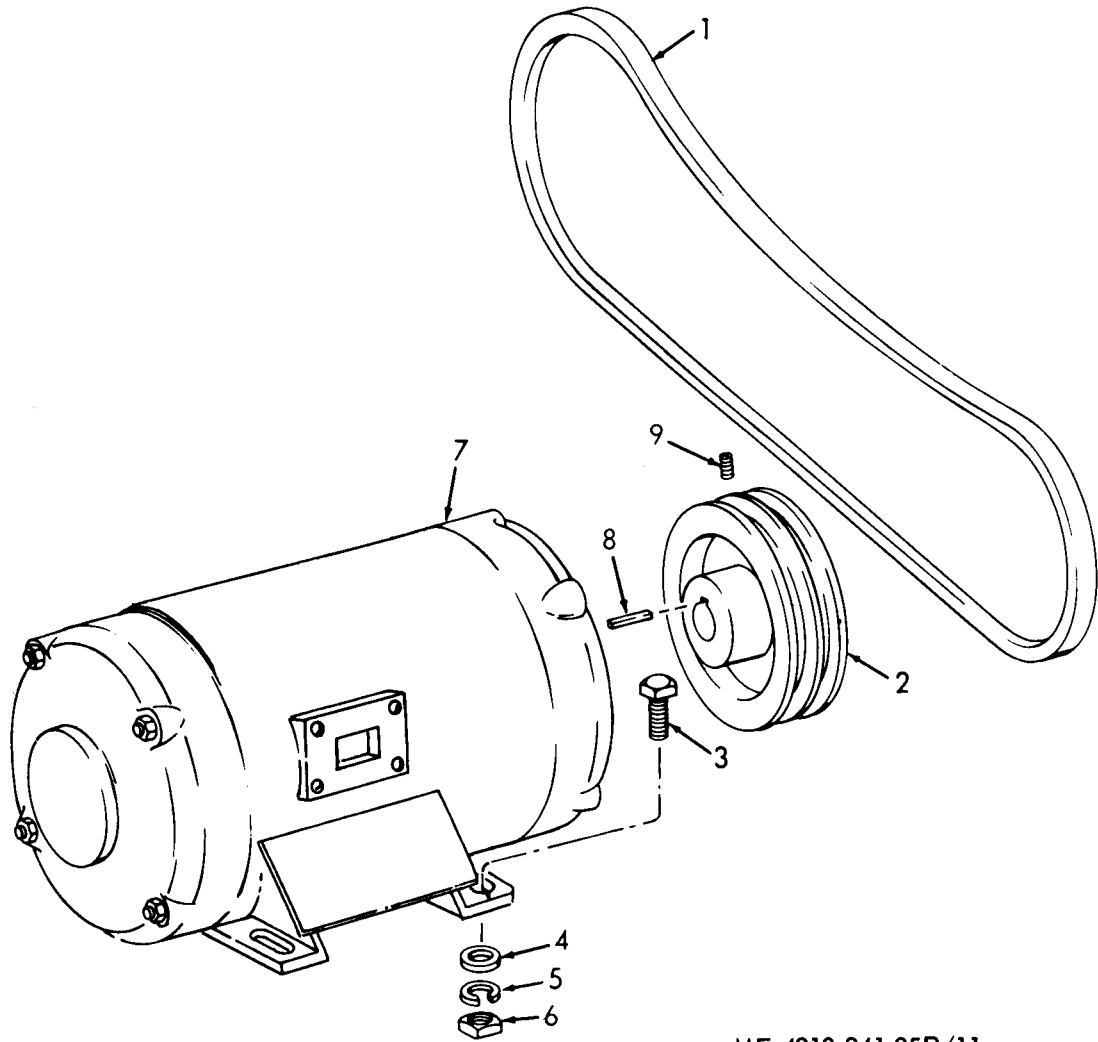


ME 4310-241-35P/10

Figure 9. Air Filter.

INDEX TO PARTS, FIGURE 9

Reference Number	Functional Group	Item Name	Reference Number	Functional Group	Item Name
1	5008	SCREEN	5	5008	PLATE
2	5008	ELEMENT	6	5008	COVER
3	5008	COVER	7	5008	CLAMP
4	5008	BOLT -NUT			

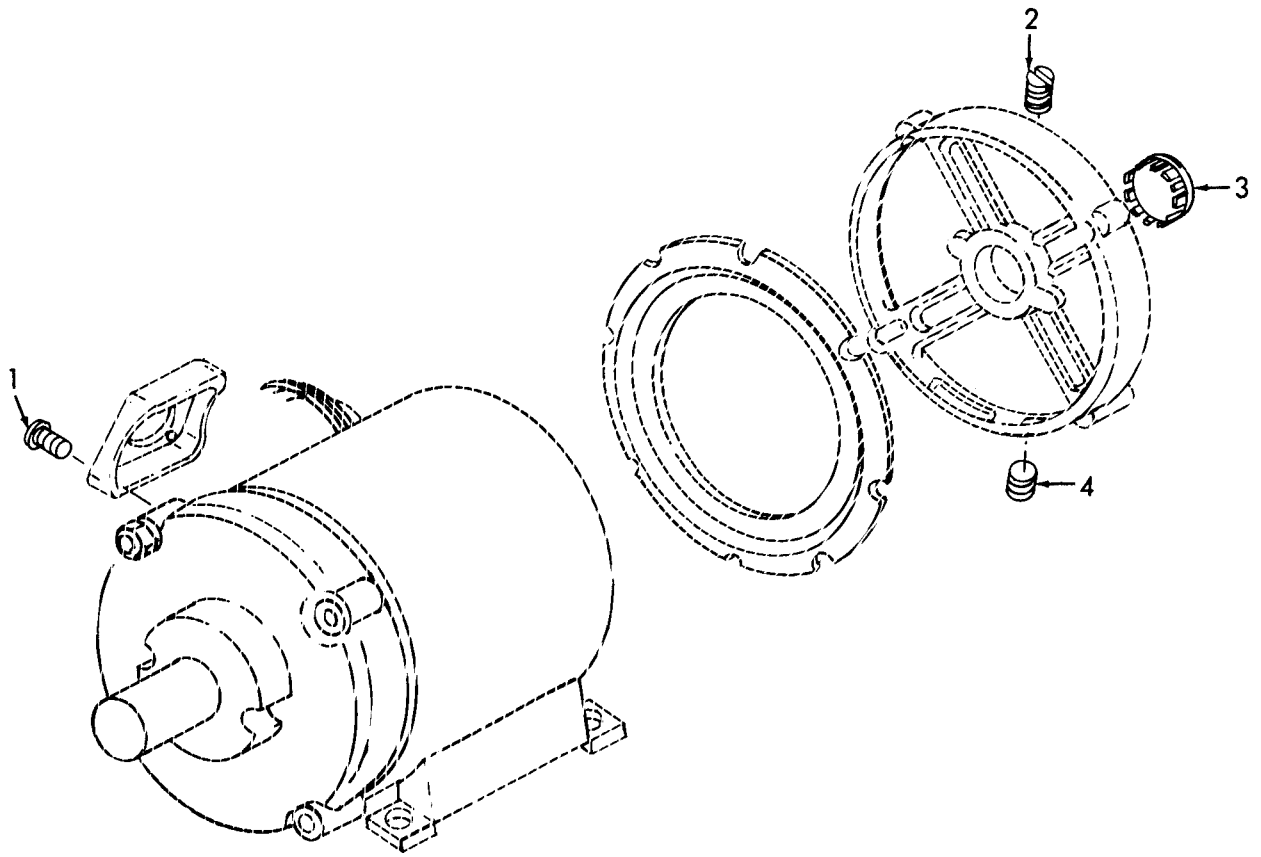


ME 4310-241-35P/11

Figure 10. Motor, Belt, and Pulley.

INDEX TO PARTS, FIGURE 10

Reference Number	Functional Group	Item Name	Reference Number	Functional Group	Item Name
1	5007	BELT	6	4000	NUT
2	4007	PULLEY	7	4000	MOTOR
3	4000	SCREW	8	4007	KEY
4	4000	WASHER	9	4007	SETSCREW
5	4000	WASHER			



ME 4310-241-20P/11

Figure 11. Electric Motor.

INDEX TO PARTS, FIGURE 11

Reference Number	Functional Group	Item Name
1	4005	SCREW
2	4005	PLUG
3	4005	BUTTON
4	4005	PLUG

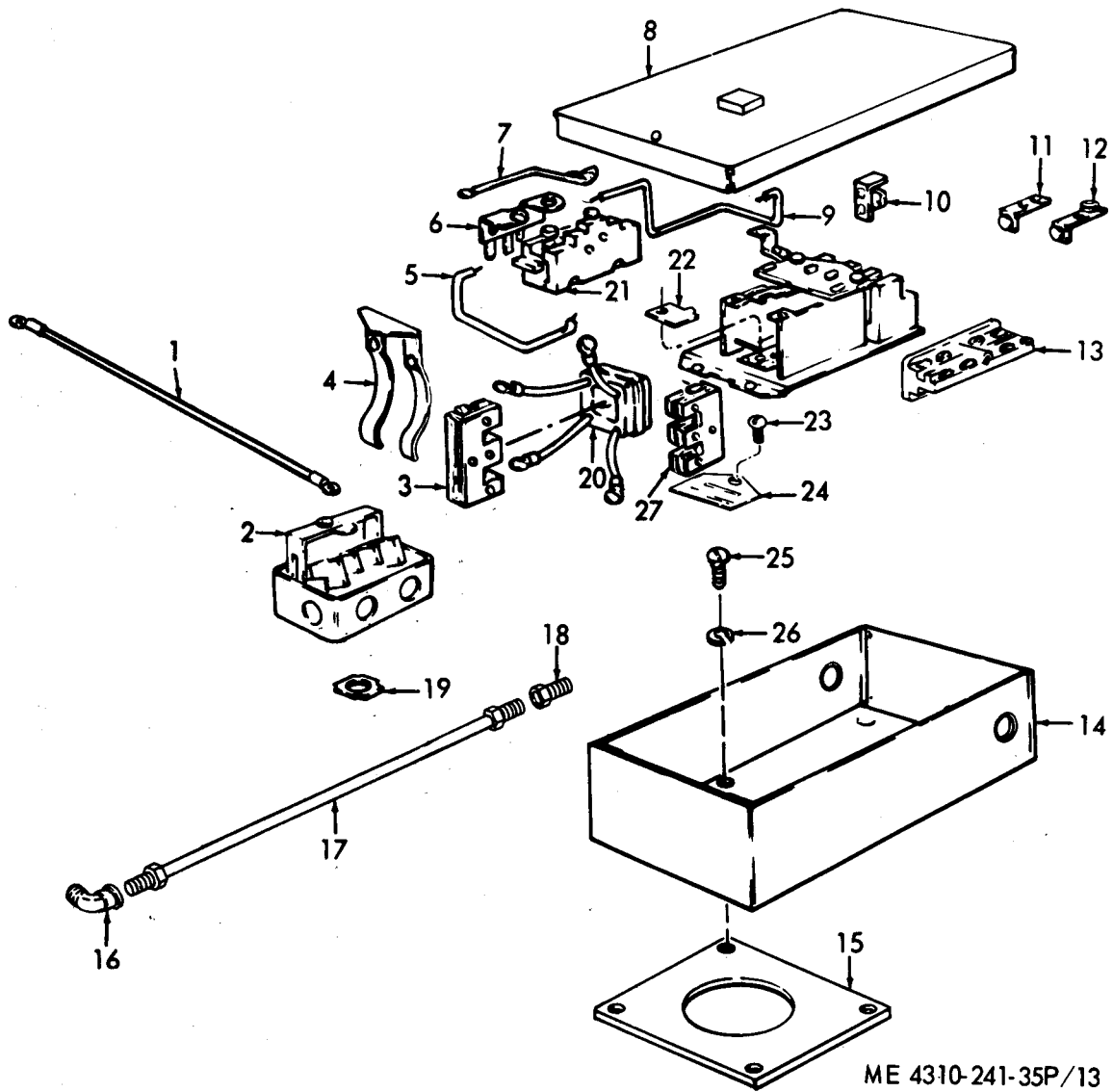
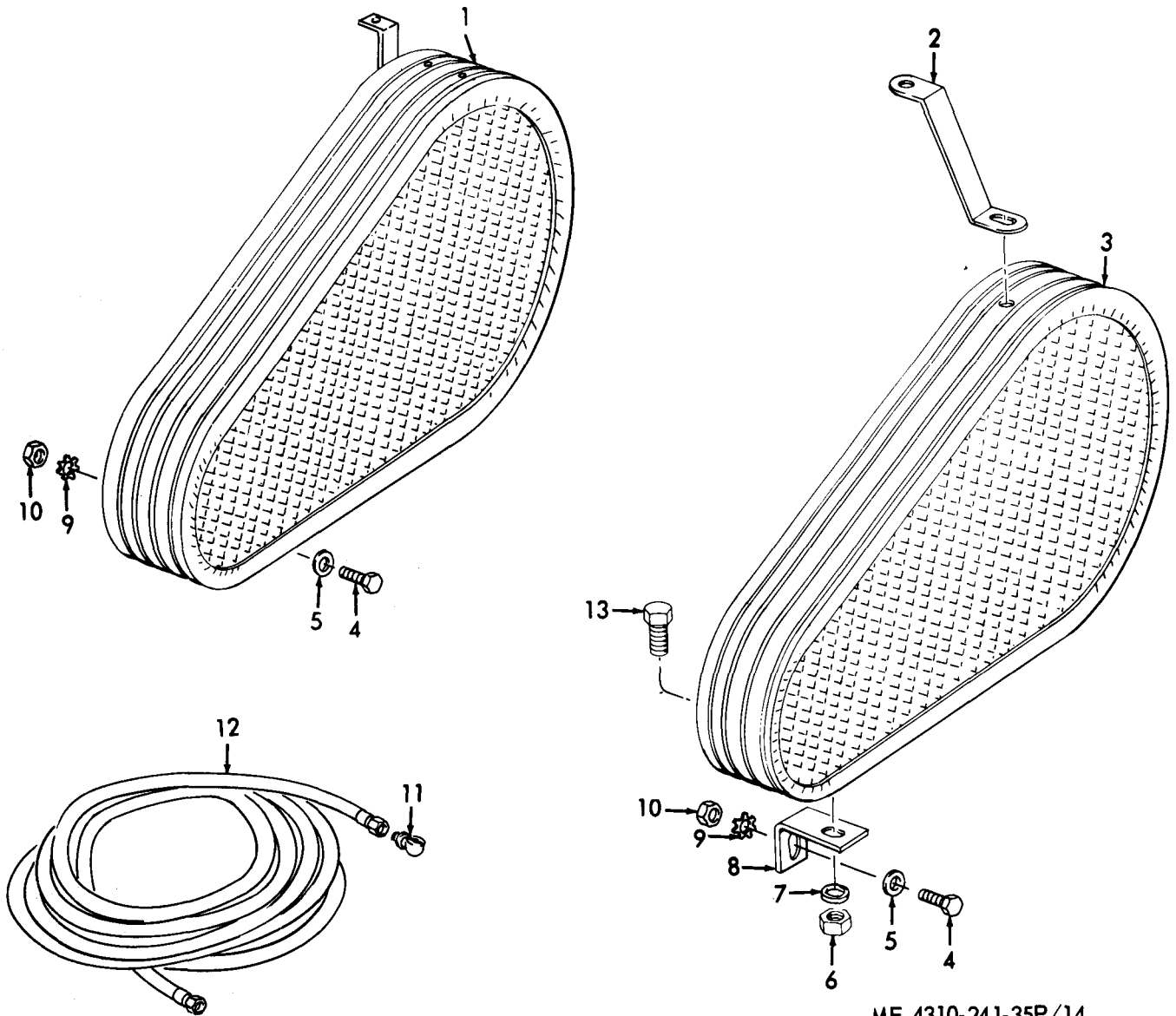


Figure 12. Magnetic Starter.



INDEX TO PARTS, FIGURE 12

Reference Number	Functional Group	Item Name	Reference Number	Functional Group	Item Name
1	4010	LEAD	15	4010	PLATE
2	4010	SWITCH	16	4010	ELBOW
3	4010	MAGNET	17	4010	TUBE
4	4010	SPRING	18	4010	ADAPTER
5	4010	LEAD	19	4010	LOCKNUT
6	4010	HEATER	20	4010	COIL
7	4010	LEAD	21	4010	RELAY
8	4010	COVER	22	4010	PLATE
9	4010	LEAD	23	2210	SCREW
10	4010	CONTACT AY	24	2210	PLATE
11	4010	CONTACT	25	4010	SCREW
12	4010	CONTACT	26	4010	WASHER
13	4010	RELAY	27	4010	MAGNET
14	4010	BOX			



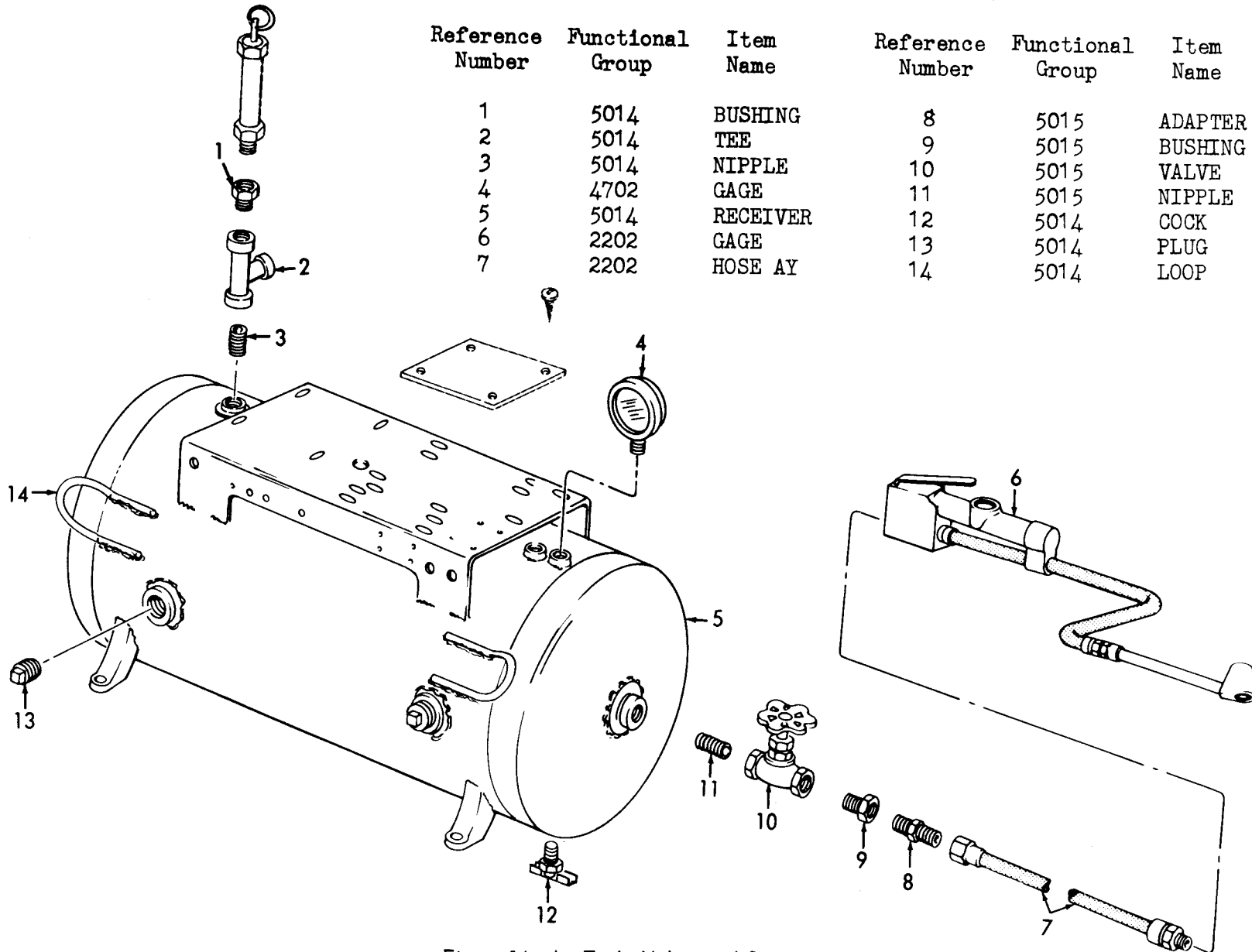
ME 4310-241-35P/14

Figure 13. Compressor Drive Belt Guards, Bracket, and Mounting Hardware.

INDEX TO PARTS, FIGURE 13

Reference Number	Functional Group	Item Name	Reference Number	Functional Group	Item Name
1	5007	GUARD	8	5007	BRACKET
2	5007	BRACKET	9	5007	WASHER
3	5007	GUARD	10	5007	NUT
4	5007	SCREW	11	2202	CHUCK
5	5007	WASHER	12	2202	HOSE AY
6	5007	NUT	13	5007	BOLT
7	5007	WASHER			

INDEX TO PARTS, FIGURE 14



Reference Number	Functional Group	Item Name	Reference Number	Functional Group	Item Name
1	5014	BUSHING	8	5015	ADAPTER
2	5014	TEE	9	5015	BUSHING
3	5014	NIPPLE	10	5015	VALVE
4	4702	GAGE	11	5015	NIPPLE
5	5014	RECEIVER	12	5014	COCK
6	2202	GAGE	13	5014	PLUG
7	2202	HOSE AY	14	5014	LOOP

Figure 14. Air Tank, Valve, and Gage.

ME 4310-241-35P/15

SECTION IV. INDEX-FEDERAL STOCK NUMBER AND REFERENCE NUMBER  
 CROSS-REFERENCE TO INDEX NUMBER

STOCK NUMBER	INDEX NUMBER	STOCK NUMBER	INDEX NUMBER
2610-050-9560	00094	4310-838-9846	00452
2610-051-9114	00093	4310-839-6555	00097
2805-601-5181	00004	4310-850-5541	00538
2805-714-8552	00005	4310-860-0035	00451
2805-993-4199	00003	4310-873-1767	00144
2815-928-6078	00560	4310-874-3179	00142
2910-705-7814	00044	4310-874-3179	00143
2910-992-6370	00045	4310-874-3181	00577
2920-064-8834	00133	4310-874-3181	00578
2920-834-8474	00291	4310-874-3181	00579
2990-269-7145	00055	4310-875-4108	00601
2990-863-0926	00535	4310-877-2622	00517
3020-837-1270	00186	4310-882-5057	0348
3030-243-7256	00444	4310-884-4518	00498
3030-251-3941	00445	4310-884-4582	00504
3110-606-8365	00363	4310-887-2622	00362
3110-606-8365	00493	4310-887-2625	00194
3110-606-8365	00518	4310-887-8765	00137
4310-065-9622	00449	4310-896-2104	00536
4310-066-4206	00355	4310-896-2105	00547
4310-075-1685	00554	4310-896-5984	00495
4310-327-6438	00340	4310-899-1275	00435
4310-329-8426	00429	4310-902-2447	00346
4310-532-7791	00593	4310-930-2561	00590
4310-585-4283	00350	4310-934-8196	00488
4310-585-4283	00500	4310-961-3666	00562
4310-585-7546	00359	4310-961-3667	00556
4310-585-7546	00392	4310-977-2549	00439
4310-585-9951	00351	4310-977-2549	00515
4310-585-9951	00393	4310-977-8670	00570
4310-616-4372	00421	4310-980-0140	00481
4310-616-4372	00428	4310-986-9683	00509
4310-616-4373	00369	4310-987-2742	00344
4310-616-4373	00524	4310-993-4188	00477
4310-616-4373	00537	4310-993-4198	00479
4310-625-6748	00368	4310-999-6411	00482
4310-625-6748	00523	4710-277-5525	00032
4310-625-6748	00534	4710-277-5525	00034
4310-625-6749	00364	4710-277-5525	00036
4310-625-6749	00494	4710-277-5525	00511
4310-625-6749	00519	4710-277-5525	00514
4310-625-6752	00420	4710-277-5525	00629
4310-625-6753	00417	4710-277-7748	00568
4310-625-6754	00427	4710-277-7748	00630
4310-631-3396	00416	4710-278-6398	00329
4310-631-3397	00423	4710-278-6398	00441
4310-633-6114	00354	4710-278-6398	00628
4310-633-6114	00503	4720-807-8253	00029
4310-654-3588	00353	4730-011-8831	00177
4310-654-3588	00394	4730-018-9566	00047
4310-654-3589	00367	4730-044-4697	00174
4310-654-3589	00522	4730-050-1717	00620
4310-654-3589	00529	4730-142-1593	00031
4310-654-3590	00415	4730-142-1593	00328
4310-657-7413	00349	4730-142-1593	0040
4310-657-7413	00356	4730-142-1593	00510
4310-657-7413	00391	4730-196-2054	00037
4310-819-4222	00020	4730-202-6669	00617
4310-828-8558	00018	4730-202-6669	00619
4310-837-1359	00474	4730-221-3902	00027

SECTION V. INDEX-FEDERAL STOCK NUMBER AND REFERENCE NUMBER  
 CROSS-REFERENCE TO INDEX NUMBER (CONTINUED)

STOCK NUMBER	INDEX NUMBER	STOCK NUMBER	INDEX NUMBER
4730-221-3902	00192	5305-887-5666	00446
4730-228-1621	00387	5305-988-1170	00111
4730-246-9215	00335	5305-988-1725	00109
4730-257-2119	00592	5305-988-1725	00129
4730-257-5028	00580	5305-988-1727	00110
4730-277-8266	00277	5305-993-0184	00152
4730-277-8276	00193	5305-993-0184	00231
4730-277-8809	00618	5305-993-0184	00264
4730-277-9657	00583	5306-017-9818	00383
4730-277-9659	00584	5306-021-5371	00574
4730-277-9997	00395	5306-225-8497	00382
4730-278-3395	00173	5306-225-8497	00447
4730-278-3397	00176	5306-225-8499	00384
4730-278-3425	00175	5306-225-8499	00385
4730-287-0022	00586	5306-225-8503	00573
4730-288-1619	00390	5306-225-8503	00575
4730-288-9930	00191	5307-732-4920	00405
4730-288-9930	00433	5307-850-0308	00404
4730-289-1959	00039	5310-010-2635	00159
4730-289-1959	00513	5310-010-2635	0037
4730-365-0231	00072	5310-011-4604	00472
4730-391-3771	00614	5310-012-1753	00014
4730-391-3771	00615	5310-012-1753	00471
4730-684-4648	00576	5310-013-1099	00077
4730-850-7971	00552	5310-014-7697	00467
4730-851-6259	00564	5310-014-7697	00612
4820-274-7389	00623	5310-020-5186	00598
4820-888-9302	00602	5310-043-2226	00267
4910-204-2644	00138	5310-050-2234	00164
5305-010-0135	00161	5310-050-3267	00462
5305-010-2705	00491	5310-050-3275	00006
5305-011-3976	00600	5310-050-3275	00372
5305-012-0583	00181	5310-058-3651	00358
5305-012-0583	00182	5310-087-7493	00013
5305-012-1279	00151	5310-087-7493	00165
5305-012-2159	00265	5310-087-7493	00377
5305-013-2740	00290	5310-194-1540	00464
5305-013-2740	00321	5310-265-9215	00563
5305-013-2764	00262	5310-269-5914	00341
5305-013-2892	00263	5310-543-2629	00458
5305-013-2900	00419	5310-543-2629	00460
5305-013-9412	00189	5310-543-4488	00063
5305-021-4389	00162	5310-543-5653	00075
5305-021-5450	00179	5310-582-3341	00167
5305-021-5466	00009	5310-582-3341	00380
5305-021-5466	00010	5310-584-5005	00459
5305-021-5466	00375	5310-596-7691	00422
5305-060-6800	00160	5310-596-7691	00430
5305-065-6800	00374	5310-625-6755	00418
5305-068-0502	00008	5310-625-6755	00425
5305-225-3839	00463	5310-637-9541	00168
5305-253-5612	00150	5310-637-9541	00378
5305-261-1868	00531	5310-732-0558	00158
5305-269-3211	00007	5310-732-0558	00370
5305-269-3213	00373	5310-762-6213	00017
5305-558-2679	00130	5310-809-4058	00468
5305-558-3679	00207	5315-043-1787	00016
5305-638-8908	00076	5315-057-6607	00185
5305-649-8115	00127	5315-811-6491	00059
5305-724-6810	00188	5315-839-5822	00062

SECTION V. INDEX-FEDERAL STOCK NUMBER AND REFERENCE NUMBER  
 CROSS-REFERENCE TO INDEX NUMBER (CONTINUED)

STOCK NUMBER	INDEX NUMBER	STOCK NUMBER	INDEX NUMBER
5315-846-4881	00525	6110-877-2626	00211
5330-239-1792	00411	6110-877-2626	00237
5330-262-2543	00091	6110-877-2627	00212
5330-262-2543	00627	6110-877-2627	00238
5330-298-5554	00366	6110-882-4227	00293
5330-298-5554	00502	6110-882-4227	00213
5330-298-5554	00521	6110-883-4227	00239
5330-298-5674	00046	6110-883-4227	00274
5330-298-5674	00626	6110-883-4227	00306
5330-584-9000	00352	6110-887-2623	00303
5330-584-9000	00437	6110-887-2626	00272
5330-584-9010	00413	6110-887-2626	00294
5330-599-5888	00412	6110-887-2626	00304
5330-599-5888	00414	6110-887-2627	00273
5330-882-5056	00410	6110-887-2627	00292
5330-884-0705	00605	6110-887-2627	00305
5340-664-0403	00170	6110-887-4466	00195
5340-766-0331	00232	6110-887-4466	00279
5340-766-0331	00266	6110-887-4551	00208
5340-766-0331	00295	6110-887-4551	00234
5340-766-0331	00322	6110-887-4551	00268
5930-241-8921	00296	6110-887-4744	00300
5930-430-4071	00233	6145-160-5137	00246
5930-430-4071	00297	6145-160-5137	0049
5930-430-4071	00324	6145-160-5137	00253
5930-430-4071	00326	6145-160-5137	00281
5930-521-8471	00200	6145-160-5137	00633
5940-050-6207	00245	6145-161-5415	00220
5940-050-6207	00248	6145-161-5415	00255
5940-050-6207	00251	6145-161-5415	00632

5940-681-9713	00198	6145-191-2575	00222
5940-681-9713	00217	6145-191-2575	00243
5940-681-9713	00252	6145-192-2575	00631
5945-020-6725	00229	6145-295-1309	00282
5945-020-6725	00289	6145-542-6039	00199
5945-020-6726	00230	6145-542-6039	00218
5950-532-7843	00236	6610-532-7789	00278
5950-532-7843	00271	6685-264-3961	00337
5975-152-1075	00223	6685-264-3961	00338
6105-877-2629	00157	6685-264-3961	00339
6105-887-4469	00155	6685-514-3709	00336
6110-532-7789	00196	8305-262-2543	00074
6110-757-1758	00215	8305-430-9284	00042
6110-877-2623	00210	8305-430-9284	00634

REFERENCE NO	MFG CODE	INDEX NO	REFERENCE NO	MFG CODE	INDEX NO
ACA126	21810	00236	A1560	11431	00078
ACA126	21810	00271	A9913Y	21810	00209
ACA151	21810	00210	A9913Y	21810	00235
ACA151	21810	00303	A9913Y	21810	00270
AR3	21810	00291	A9913Y	21810	00302
AW14-6	11568	00071	A9917X	21810	00214
AW533	11568	00070	A9917X	21810	00240
AW586	11568	00068	A9917X	21810	00275

SECTION V. INDEX-FEDERAL STOCK NUMBER AND REFERENCE NUMBER  
 CROSS-REFERENCE TO INDEX NUMBER (CONTINUED)

REFERENCE NO	MFG CODE	INDEX NO	REFERENCE NO	MFG CODE	INDEX NO
B22-10	11568	00069	L6290L2	21810	00239
B356-109	11568	00066	L6290L2	21810	00293
B356-110	11568	00067	L6290L2	21810	00306
C6247V	21810	00227	L7030W1	21810	00225
C6247V	21810	00259	L7030W1	21810	00257
C6247V	21810	00317	L7030W1	21810	00284
C6247W	21810	00287	L7030W1	21810	00314
C9906W	21810	00228	L7030W2	21810	00224
C9906W	21810	00260	L7030W2	21810	00256
C9906W	21810	00288	L7030W2	21810	00283
C9906W	21810	00318	L8833L3	21810	00229
D274-1	23826	00202	L8833L3	21810	00261
D334-1	23826	00204	L8833L3	21810	00289
D354-1	23826	00203	L8833L3	21810	00319
D358-1	23826	00206	L8833L4	21810	00230
D9805	23826	00201	L8833L4	21810	00320
E1531-62R	38151	00163	L9290L2	21810	00274
E4850-6	38151	00172	MS35338-8	96906	00166
E7497-1	38151	00174	MS35338-8	96906	00379
E7497-3	38151	00171	MS35389-1	96906	00094
E7531-162	38151	00180	MS35392-48	96906	00093
E7531-62	38151	00178	M122	11568	00366
FA0	21810	00310	M122	11568	00502
FIG112-1-4-200	75336	00541	M27	11568	00315
FIG112-200	75336	00540	M27	11568	00438
FIG125-1-4-75LB	75336	00544	M27	11568	00516
FIG125-70	75336	00542	M30	11568	00477
FP175	71342	00611	M30L	11568	00478
FP7410	71342	00602	M31	11568	00479
F12-6-208V	21810	00215	M31L	11568	00480
F14-2	21810	00279	M32	11568	00487
F14-2-230V	21810	00195	M408	11568	00301
F28	21810	00278	M408	11568	00432
F28-0-115V	21810	00196	M449B	11568	00595
F4-0	21810	00311	M450A	11568	00596
F538A	11568	00143	M453A	11568	00601
F7-1-416V	21810	00194	M454	11568	00599
G1506	94894	00140	M456	11568	00161
HE7-53A	11568	00417	M459	11568	00436
HL	23826	00297	M460	11568	00396
H1	23826	00233	M461	14959	00388
H1	23826	00324	M462	11568	00490
H1	23826	00326	M466	11568	00546
H110P	11568	00536	M472	11568	00531
H122	11568	00361	M498	11568	00186
H18	11568	00407	M499	11568	00309
H41P	11568	00597	M501	11568	00465
J501	11568	00455	M501A	11568	00448
LL2-40	11568	00616	M501B	11568	00449
L6248W2	21810	00211	M501D	11568	00450
L6248W2	21810	00237	M501L	11568	00454
L6248W2	21810	00272	M502A	11568	00003
L6248W2	21810	00294	M508	11568	00434
L6248W2	21810	00304	M519	11568	00338
L6289L2	21810	00212	M519C	11568	00337
L6289L2	21810	00238	M519C	80208	00339
L6289L2	21810	00273	M52	11568	00476
L6289L2	21810	00292	M523	11568	00623
L6289L2	21810	00305	M538A3	11568	00033
L6290L2	21810	00213	M538A36	11568	00035

SECTION V INDEX-FEDERAL STOCK NUMBER AND REFERENCE NUMBER  
 CROSS-REFERENCE TO INDEX NUMBER (CONTINUED)

REFERENCE NO	MFG CODE	INDEX NO	REFERENCE NO	MFG CODE	INDEX NO
M54B	11568	00483	RE10-99	11568	00551
M54BL	11568	00482	RE12	11568	00569
M552	11568	00054	RE14-104	RE14-104	11568
M554	11568	00617	RE20-106	11568	00530
M567	11568	00386	RE4-12	11568	00571
M606	11568	00024	RE4-12A	11568	00570
M607	11568	00023	RE4-80A	11568	00508
M617	11568	00011	RE4-80AL	11568	00506
M617	11568	00012	RE7-52A	11568	00424
M62	11568	00484	RE7-56A	11568	00427
M627	11568	00588	RE7-57A	11568	00420
M629	11568	00578	RE7-58	11568	00429
M632	11568	00481	RE7-60	11568	00421
M633	11568	00485	RE7-60	11568	00428
M634	11568	00020	RE7-81	11568	00426
M636	11568	00475	SB258	11568	00509
M640	11568	00133	SD494	11568	00065
M641	11568	00334	SE14-15	11568	00400
M645	11568	00148	SE14-15B	11568	00401
M651	11568	00117	SE14-15B	11568	00403
M657	11568	00115	SE14-15BL	11568	00402
M694	1568	00028	SE14-15L	11568	00398
NR104	11568	00528	SE14-29	11568	00349
NR15	11568	00399	SE14-29	11568	00356
NR150	11568	00344	SE14-29	11568	00391
NR150A	11568	00345	SE14-30A	11568	00354
NR150AL	11568	00347	SE14-30A	11568	00360
NR150L	11568	00346	SE14-30A	11568	00503
NR2	11568	00562	SE14-31	11568	00351
NR2AB	11568	00556	SE14-31	11568	00393
NR2ABL	11568	00554	SE14-33	11568	00353
NR2B	11568	00553	SE14-33	11568	00394
NR2BL	11568	00555	SE14-84	11568	00533
NR2L	11568	00561	SE14-89	11568	00350
NR31	11568	00359	SE14-89	11568	00357
NR31	11568	00392	SE14-89	11568	00500
NR4-1H	11568	00565	SE254	11568	00515
NR4-1H	11568	00566	SE30-101	11568	00364
NR4-1P	11568	00567	SE30-101	11568	00494
NR4-105	94834	00461	SE30-101	11568	00519
NR4-7	11568	00451	SE30-17	11568	00435
NR4-7L	11568	00452	SE30-18	11568	00352
NR4-80B	11568	00507	SE30-18	11568	00437
NR4-80BL	11568	00505	SE5-2A	11568	00560
NR47	11568	00453	SE5-2AB	11568	00489
N06X1-2	87764	00040	SE5-2ABL	11568	00488
N060	11568	00336	SE5-2C	11568	00559
PF1205D	14959	00581	SE5-2CL	11568	00557
PF13J	14959	00397	SE5-2C1	11568	00558
PF33	14959	00389	SE5-28	11568	00412
PF604B	26403	00619	SE5-8	11568	00408
PK55	23826	00200	SE5-82	11568	00547
PPMSM	11568	00147	SE5-82A	11568	00548
P2202B	11568	00590	SE5-83B	11568	00535
P2249B	11568	00097	SE5-85	11568	00365
RE10-100	11568	00498	SE5-85	11568	00496
RE10-100L	11568	00497	SE5-85	11568	00520
RE10-62	11568	00418	SE5-86A	11568	00367
RE10-62	11568	00425	SE5-86A	11568	00522
RE10-66	11568	00411	SE5-86A	11568	00529



SECTION V. INDEX-FEDERAL STOCK NUMBER AND REFERENCE NUMBER  
 CROSS-REFERENCE TO INDEX NUMBER (CONTINUED)

REFERENCE NO	MFG CODE	INDEX NO	REFERENCE NO	MFG CODE	INDEX NO
SE5-87	11568	00504	Z261-19	11568	00113
SE5-88	11568	00358	Z261-19	11568	00132
SE5-88	11568	00501	Z261-2	11568	00104
SE5-88	11568	00545	Z261-2A	11568	00121
SE5-90	11568	00538	Z261-20	11568	00101
SE5-91	11568	00369	Z261-20	11568	00118
SE5-91	11568	00524	Z261-3	11568	00102
SE5-91	11568	00537	X261-3	11568	00119
SE5-92A	11568	00526	Z261-4	11568	00099
SE5-94	11568	00532	Z261-5	11568	00098
SE5-95	11568	00363	Z261-5A	11568	00116
SE5-95	11568	00493	Z261-6	11568	00105
SE5-95	11568	00518	Z261-6A	11568	00122
SE5-97	11568	00368	Z261-7	11568	00112
SE5-97	11568	00523	Z261-8	11568	00103
SE5-97	11568	00534	Z261-8	11568	00120
SE5-98	11568	00549	Z261-9	11568	00058
SE572	11568	00405	Z261B	11568	00114
S108	23826	00205	Z538	11568	00144
T1014	91895	00622	Z538A	11568	00142
UB254	11568	00439	Z60A	11568	00495
UB254	11568	00512	Z64A	11568	00486
U8	11568	00184	Z64L	11568	00474
VB254	11568	00442	Z67-70	75336	00543
WD9920W	21810	00146	Z9917X	21810	00307
WD9920W	21810	00241	1-2CLN	74545	00285
WD9920W	21810	00276	1-2CN	11568	00621
WD9920W	21810	00308	1-2T	86285	00591
X261-15	11568	00131	1-2X1-5	11568	00582
Y9389X	21810	00149	1-4-20N	87764	00598
Y9389X	21810	00226	1-4ETL	79807	00471
Y9389X	21810	00258	1-4FW	79807	00464
Y9389X	21810	00286	1-4LW	79807	00470
Y9389X	21810	00316	1-4W	79807	00050
ZDA26-73	73559	00331	1-4W	79807	00466
Z100G	11568	0041	1-4X1-490DEGCE	87005	00277
Z113	11568	00423	1-4X1-8SCB	87005	00269
Z114	11568	00415	1-4X8	11568	00325
Z115	11568	00416	1-4X8-1-2AT	11568	00298
Z124	11568	00362	1A08-1	81336	00004
Z124-150	11568	00517	1A08-2	81336	00005
Z206-200	75336	00539	10TW80CSTR	21810	00312
Z220A	11568	00593	10TW90CS0L	21810	00313
Z220B	11568	00594	10TW90DEGCSOL	21810	00221
Z253	11568	00348	10TW90DEGCSOL	21810	00282
Z253A	11568	00355	11-14	87005	00513
Z257	11568	00043	1136G34	86823	00589
Z257-1	11568	00049	1136H34	11568	00587
Z257-2	11568	00044	14TW4	11568	00280
Z257-3	11568	00045	14TW80CSTR	21810	00216
Z257-4	11568	00048	14TW80DEGC	21810	00281
Z260	11568	00340	15-4A	87005	00499
Z261-1	11568	00107	1825A	92976	00577
Z261-1A	11568	00126	1825A	92976	00579
Z261-10	11568	00108	184CSR29BBCW	38151	00155
Z261-10	11568	00128	184P4R2158	38151	00156
Z261-13	11568	00123	184TSR27BB	38151	00157
Z261-17	11568	00064	189D1-4X1-8	30327	00192
Z261-17	11568	0014	2-1-2X1-1-2-2AL	11568	00018
Z261-18	11568	00100	2DA25-73	73559	00296

SECTION V. INDEX-FEDERAL STOCK NUMBER AND REFERENCE NUMBER  
 CROSS-REFERENCE TO INDEX NUMBER (CONTINUED)

REFERENCE NO	MFG CODE	INDEX NO	REFERENCE NO	MFG CODE	INDEX NO
2DA25-73	73559	00323	5-1-4X7-82VA	11568	00187
2030	79150	00521	5-16N	11568	00457
21-2X3-42VA	11568	00019	5-16W	15168	00465
2165	79150	00413	5-166W	11568	00469
2185	79150	00414	5L19217	11568	00025
29NE040	72962	00038	559	11431	00079
29NE040	72962	00106	6ETL	79807	00051
29NE040	72962	00124	6381	71342	00609
29NE058	72962	00125	6382	71342	00607
29NE058	11568	00585	6383	71342	00608
3-4X1-2CRW	74545	00299	6460	11431	00082
3-8-16X1-1-4CS	87764	00160	6461	11431	00083
3-8-16X1-1-4CS	87764	00374	6711	71342	00610
3-8-16X3-8SS	11568	00189	699	94894	00137
3-8FN	79807	00164	7224874	21810	00232
3-8LW	11568	00167	7224874	21810	00266
3-8LW	11568	00380	7224874	21810	00295
3-8N	87764	00159	730DCTDRC	08070	00141
3-8N	87764	00371	730DCTRDG	08070	00139
306	11431	00080	7300CTDRC	08070	00138
307	11431	00086	7394	7342	00606
4L540-2	25472	00444	7396	71342	00605
4L580-2	25472	00445	7404	71342	00603
4201	11431	00081	8R	72800	00026
4204AA12J201-26	21810	00208	841	11431	00088
4204AA12J201-26	21810	00234	89966	08645	00055
4204AA12J201-26	21810	00268	919	11431	00090
4204AA13J201-51	21810	00300	954	11431	00087
4216	11431	0089	955	11431	00085
4219	11431	00084			

By Order of the Secretary of the Army:

W. C. WESTMORELAND,  
*General, United States Army,*  
*Chief of Staff.*

Official:

KENNETH G. WICKHAM,  
*Major General, United States Army,*  
*The Adjutant General.*

DISTRIBUTION:

To be distributed in accordance with DA Form 12-25, Section I, (qty rqr block no. 6) organizational maintenance requirements for Air compressors, 5 CFM.





**TM 5-4310-241-20P COMPRESSOR, RECIPROCATING: AIR—1969**